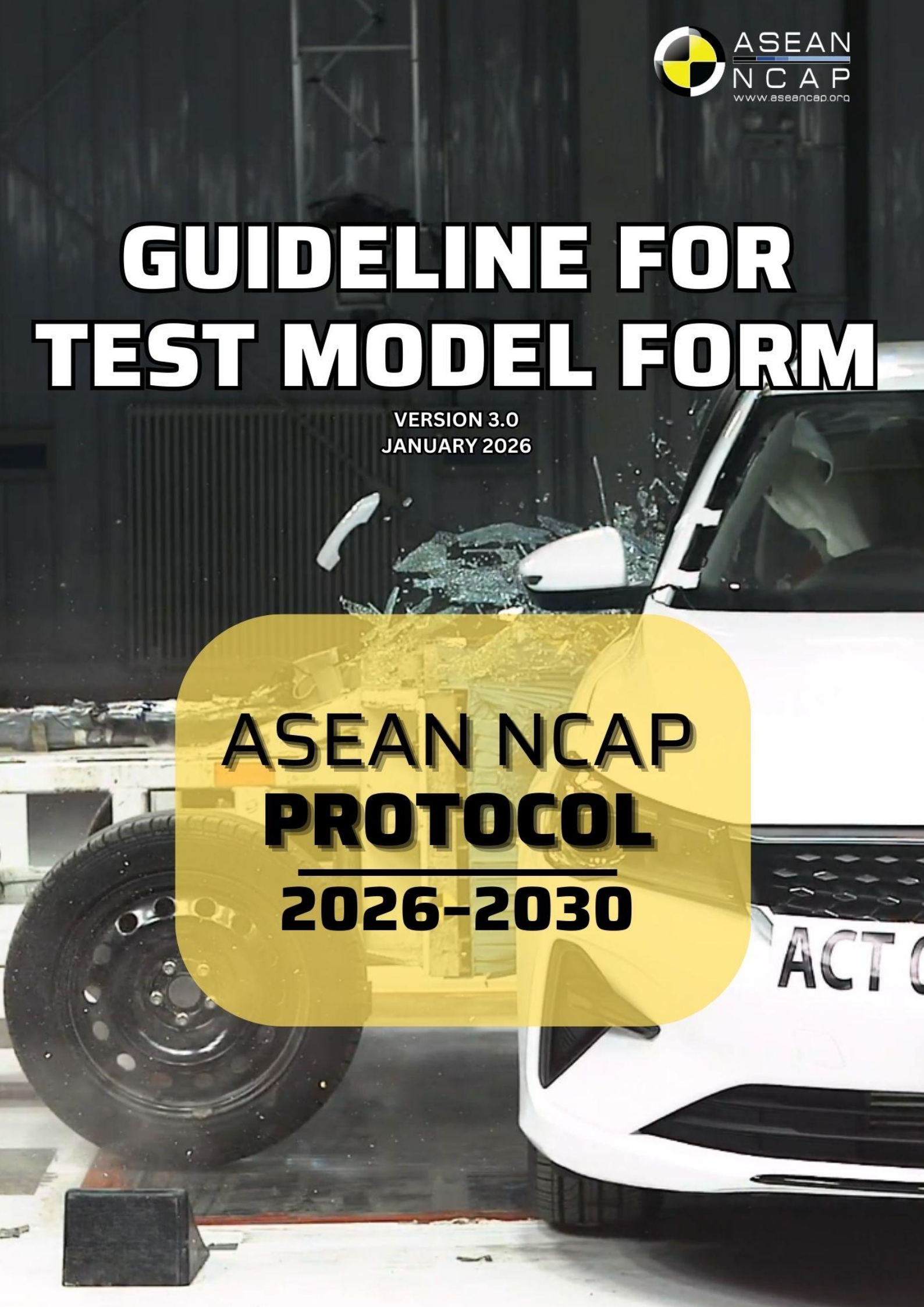


GUIDELINE FOR TEST MODEL FORM

VERSION 3.0
JANUARY 2026

**ASEAN NCAP
PROTOCOL**

2026-2030



INTRODUCTION

1. The test model form is shown in **Appendix I**.
2. This form is to be filled in by the **Responsible Party** for the selected model undergoing ASEAN NCAP assessment.
3. The information provided here will be considered **Open for Public** as it will be used by ASEAN NCAP primarily in its publications in order to deliver the most accurate information.

SECTION A: SELECTED CAR

1. This section's information is provided by ASEAN NCAP.
2. **RHD** for Right Hand Drive; **LHD** for Left.

SECTION B: RESPONSIBLE PARTY & PERSON-IN-CHARGE (PIC)

1. The information in **Section A** in the form is prepared by ASEAN NCAP prior to distribution to the intended recipient i.e. the “responsible party” which will be identified by ASEAN NCAP primarily based on the market origin – OEMs or local entities (e.g. JVs, Traders, etc.).
2. Since the automotive business are formed in variable structures depending on countries and business strategies, ASEAN NCAP will give the liberty to either the OEMs or their local entities to be the “responsible party” in this survey.
3. Please nominate the “responsible party”, if applicable.
4. PIC can be more than one person. Please expand the table to add subsequent PIC.

SECTION C: CONFIRMATION OF GENERAL INFORMATION

1. It is vital to provide the most accurate information to the main target audience of ASEAN NCAP, which is the consumers. Therefore, it is the responsibility of the “responsible party” to guide/provide ASEAN NCAP with the information in **Section A**.
2. Please nominate if need so.

SECTION D: VARIANT INFORMATION

1. **V1** will be the variant chosen by ASEAN NCAP.
2. Use of the country code – Country code use in this entire survey form will be based on two-letter format internet country code (or “country code top-level domain – ccTLD”) that can be referred in Appendix II.
3. Please provide the production country for each variant being declared in the form.

4. Terms/Acronyms:

ABS	Anti-lock Braking System
AEB	Autonomous Emergency Braking
AEB CM	Autonomous Emergency Braking Car to Motorcyclist
ADB	Adaptive Driving Beam
ADL	Automatic Door Lock
AHB	Automatic High Beam
ARV	Advanced Rear Visualization
BST	Blind Spot Technology
CCRs	Car-to-Car Rear stationary
CCRm	Car-to-Car Rear moving
CCRb	Car-to-Car Rear braking
CPD	Child Presence Detection
CRS	Child Restraint System
DSM	Driver State Monitoring
ESC	Electronic Stability Control or similar system e.g. ESP
FCW	Forward Collision Warning
HPT	Head Protection Technology
LDW	Lane Departure Warning
LKA	Lane Keep Assist
MCB	Multi Collision Brake
PED	Pedestrian Detection
RCTA	Rear Cross Traffic Alert
RCTB	Rear Cross Traffic Braking
SA	Speed Assistance
SBR	Seatbelt Reminder – Total (Position: D for Driver; FP for Front Passenger; RP for Rear Passenger)
Trans.	Transmission Type (Automatic or Manual)
Body Type	Sedan; Hatchback; MPV; Wagon etc.
Engine Cap. (L)	Engine capacity in liter

Engine Type	NA for Naturally Aspirated; Turbocharged; Hybrid; EV
Motor Power (kW)	Battery capacity in Kilowatt for electric vehicle

PLEASE PROVIDE THE MOST COMPREHENSIVE BROCHURE **FOR EACH VARIANT AT ALL ASEAN MARKET COUNTRIES**-Digital version (PDF) preferred.

SECTION E: MODEL NAME WORLDWIDE

1. Please provide other names used for the same model worldwide (twinned model/base model).

SECTION F: DETAILED SAFETY FEATURES

1. This is the extended information from Section D. Coding is also available on the form.

Coding

Fill **00** (zero-zero) for seats not available or non-related items.

ABS Variants:

4Ch-4s: 4-channel/4-sensor system	3Ch-3s: 3-channel/3-sensor system (Variant 3)	2Ch-1/2s: 2-channel/1 or 2-sensor system
--	--	---

Safety Belt System:

Item 1	Belt Type	Mention belt type by number e.g. 2 for 2-point belt or 3 for 3-point belt
Item 2	Pre-tensioner	0P (zero-P) for none; RP for retractor pre-tensioner; LP for lap pre-tensioner; DP for double pre-tensioner (retractor + lap)
Item 3	Load Limiter	0L (zero-L) for none; LL if available
Answer Sample		3-RP-0L

Child Restraint Equipment:

Item 1	Belt Fit	BO for Belt Only; BX for Belt with other fitment type
Item 2	ISOFIX	ISF (mention if available)
Item 3	Top Tether	TT (mention if available)
Item 4	Air-bag OFF	ABOM for Air-bag OFF function manually operated; ABOA for Air-bag OFF function auto-detect (mention if necessary)
Answer Sample		Example 1: ISF-TT Example 2: BO-ABOA


Airbags:

Item 1	Driver	DAB for Driver Airbag
Item 2	Front Passenger	PAB for Front Passenger Airbag
Item 3	Knee	KAB for Knee Airbag
Item 4	Side Torso	STAB for Side Torso (Thorax/Abdomen) Airbag
Item 5	Curtain	CAB for Curtain/Side Tubular Airbag
Item 6	Rear Curtain	RCAB for Rear Curtain Airbag
Item 7	Seat Cushion	SCAB for Seat Cushion Airbag
Item 8	Center Airbag	CEAB for Center Airbag
Item 9	Seatbelt Airbag	SBAB for Seatbelt Airbag
Answer Sample		Example 1: PAB-CAB

SECTION G: NOMINATED CRS

1. Kindly state the brand and model of the CRS intended for the assessment.

APPENDIX I

		NEW CAR ASSESSMENT PROGRAM FOR SOUTHEAST ASIAN COUNTRIES (ASEAN NCAP) TEST MODEL FORM ASEAN NCAP 2026–2030			
<ul style="list-style-type: none"> ➤ THIS FORM IS TO BE FILLED BY THE RESPONSIBLE PARTY FOR THE SELECTED MODEL UNDERGOING ASEAN NCAP CRASH TEST ➤ THE INFORMATION PROVIDED HERE WILL BE CONSIDERED OPEN FOR PUBLIC AS IT WILL BE USED BY ASEAN NCAP PRIMARILY IN ITS PUBLICATIONS IN ORDER TO DELIVER THE MOST ACCURATE INFORMATION ➤ THIS IS A DIGITAL VERSION FORM (EXPANDABLE) AND CONTAINS COLOR CODED ITEMS 					
A. SELECTED CAR (INFORMATION PROVIDED BY ASEAN NCAP)					
MAKE		MODEL			
VARIANT		MARKET ORIGIN			
YEAR BUILT		TEST LAB (TEST DATE)			
B. RESPONSIBLE PARTY & PERSON-IN-CHARGE (PIC)					
ENTITY NAME			>> <i>NOMINATE (IF ANY)</i>		
NAME OF PIC			DESIGNATION		
DEPARTMENT					
ADDRESS					
CONTACTS	OFFICE		FAX		
	MOBILE		E-MAIL		
C. CONFIRMATION OF GENERAL INFORMATION FOR REPORT PUBLICATION (REFER FORM GUIDELINE)					
MAKE			>> <i>NOMINATE (IF ANY)</i>		
MODEL			>> <i>NOMINATE (IF ANY)</i>		
VARIANT (V1)			>> <i>NOMINATE (IF ANY)</i>		
YEAR BUILT					
SOFTWARE VERSION INFO					

D. VARIANT INFORMATION (PLEASE EXPAND TO INCLUDE ALL VARIANTS IN ASEAN REGION - REFER FORM GUIDELINES)

NOTE: PLEASE PROVIDE THE MOST COMPREHENSIVE BROCHURE FOR EACH VARIANT IN ALL ASEAN MARKET COUNTRIES & PLEASE SPECIFY THE COUNTRY OF ORIGIN FOR EACH PRODUCT VARIANT

VARIANT (PRODUCTION COUNTRY)		V1 IS THE SELECTED VARIANT					ASEAN MARKET											
		MODEL YEAR	NO. OF AIRBAGS	ABS	ESC	NO. OF SEATS	TRANS.	BN	ID	KH	LA	MM	MY	PH	SG	TH	VN	TL
V1																		
		NO. OF DOORS	BODY TYPE	ENGINE CAP. / MOTOR POWER (L/kw)	ENGINE TYPE	FUEL TYPE	KERB MASS (KG)											
VARIANT (PRODUCTION COUNTRY)		V2					ASEAN MARKET											
		MODEL YEAR	NO. OF AIRBAGS	ABS	ESC	NO. OF SEATS	TRANS.	BN	ID	KH	LA	MM	MY	PH	SG	TH	VN	TL
V2																		
		NO. OF DOORS	BODY TYPE	ENGINE CAP. / MOTOR POWER (L/kw)	ENGINE TYPE	FUEL TYPE	KERB MASS (KG)											
VARIANT (PRODUCTION COUNTRY)		V3					ASEAN MARKET											
		MODEL YEAR	NO. OF AIRBAGS	ABS	ESC	NO. OF SEATS	TRANS.	BN	ID	KH	LA	MM	MY	PH	SG	TH	VN	TL
V3																		

		NO. OF DOORS	BODY TYPE	ENGINE CAP. / MOTOR POWER (L/kW)	ENGINE TYPE	FUEL TYPE	KERB MASS (KG)											
E. MODEL NAME WORLDWIDE (PLEASE STATE OTHER MODEL NAME/TWIN MODEL)																		
MODEL NAME		ASEAN MARKET							OTHER MARKET									

F. DETAILED SAFETY FEATURES (PLEASE EXPAND TO INCLUDE ALL VARIANTS IN ASEAN REGION - REFER FORM GUIDELINES)												
<i>NOTE: THIS IS THE EXTENDED INFORMATION SECTION FROM SECTION D</i>												
VARIANT (PRODUCTION COUNTRY)		V1 IS THE SELECTED VARIANT										
		ABS Variants			Safety Belt System (SB) & Airbags (AB)				Child Restraint Equipment			
		4Ch-4s	3Ch-3s	2Ch-1/2s	Row/Seating	M-L	Mid	M-R	M-L	Mid	M-R	
V1					Row 1	SB						
						AB						
					Row 2	SB						
						AB						
					Row 3	SB						
						AB						

G. NOMINATED CRS		BRAND
<85 cm		
76-105 cm		
CRS FOR Q6		
CRS FOR Q10		

Example

Duo Plus

Britax

H. AUTOMATIC DOOR LOCK (ADL)

Yes No

If Yes:

Standard Always on: Yes No

Optional

I. HEAD PROTECTION TECHNOLOGY

I. HEAD PROTECTION TECHNOLOGY			
COUNTRY	AVAILABLE	NOT AVAILABLE	FITMENT TYPE
BRUNEI			
SINGAPORE			
MALAYSIA			
THAILAND			
INDONESIA			
PHILIPPINES			
VIETNAM			
LAO PDR			
CAMBODIA			
MYANMAR			
TIMOR-LESTE			

Fitment Type	Details	Fitment Rating Score, α
Option A	Vehicle model is equipped with HPT as standard equipment	1
Option B	Vehicle model is equipped with HPT as optional equipment	0.5
Option C	Vehicle model is not equipped with HPT	0

Remark (if any): _____

J. CHILD PRESENCE DETECTION

J. CHILD PRESENCE DETECTION			
COUNTRY	AVAILABLE	NOT AVAILABLE	FITMENT TYPE
BRUNEI			
SINGAPORE			
MALAYSIA			
THAILAND			
INDONESIA			
PHILIPPINES			
VIETNAM			
LAO PDR			
CAMBODIA			
MYANMAR			
TIMOR-LESTE			

Fitment Type	Details	Fitment Rating Score, α
Option A	Vehicle model is equipped with Classification 1 and Classification 2 as standard equipment	1
Option B	Vehicle model is equipped with Classification 1 and Classification 2 as optional equipment and Alert as optional equipment	0.9
Option C	Vehicle model is equipped with Classification 2 as standard equipment	0.8
Option D	Vehicle model is equipped with Classification 2 as optional equipment and Alert as optional equipment	0.6
Option E	Vehicle model is equipped with Alert as standard equipment	0.5
Option F	Vehicle model is equipped with Alert as standard equipment	0.25
Option G	Vehicle model is not equipped with CPD	0

Remark (if any): _____

K. SAFETY ASSIST TECHNOLOGIES

K1. EFFECTIVE BRAKING AND AVOIDANCE			
COUNTRY	AVAILABLE	NOT AVAILABLE	FITMENT TYPE
BRUNEI			
SINGAPORE			
MALAYSIA			
THAILAND			
INDONESIA			
PHILIPPINES			
VIETNAM			
LAO PDR			
CAMBODIA			
MYANMAR			
TIMOR-LESTE			

Fitment Type	Details	Fitment Rating Score, α
Option A	Vehicle model is equipped with ESC as standard equipment	1
Option B	Vehicle model is equipped with ESC as optional equipment but ABS as standard equipment	0.5
Option C	Vehicle model is not equipped with ESC but equipped with ABS as standard equipment	0.375
Option D	Vehicle model is equipped with both ESC and ABS as optional equipment	0.25
Option E	Vehicle model is not equipped with ESC but equipped with ABS as optional equipment	0.125
Option F	Vehicle model is not equipped with either ESC or ABS	0

Remark (if any): _____

K2. SEATBELT REMINDERS*			
COUNTRY	AVAILABLE	NOT AVAILABLE	FITMENT TYPE
BRUNEI			
SINGAPORE			
MALAYSIA			
THAILAND			
INDONESIA			
PHILIPPINES			
VIETNAM			
LAO PDR			
CAMBODIA			
MYANMAR			
TIMOR-LESTE			

Fitment Type	Details	Fitment Rating Score, α
Option A	Vehicle model is equipped with SBR for driver, front passenger and rear passengers with seats occupant detection as standard equipment	1
Option B	Vehicle model is equipped with SBR for driver, front passenger and rear passengers as standard equipment	0.75
Option C	Vehicle model is equipped with SBR for driver and front passenger as standard equipment but rear passengers as optional equipment	0.625
Option D	Vehicle model is equipped with SBR for driver and front passenger only as standard equipment	0.5
Option E	Vehicle model is equipped with SBR for driver only as standard equipment	0.25
Option F	Vehicle model is not equipped with SBR	0

*Please fill in more information on seatbelt reminder in Section L

Remark (if any): _____

K3. AUTONOMOUS EMERGENCY BRAKING (AEB)			
K3.1 AEB CITY (CCRs)			
COUNTRY	AVAILABLE	NOT AVAILABLE	FITMENT TYPE
BRUNEI			
SINGAPORE			
MALAYSIA			
THAILAND			
INDONESIA			
PHILIPPINES			
VIETNAM			
LAO PDR			
CAMBODIA			
MYANMAR			
TIMOR-LESTE			

Fitment Type	Details	Fitment Rating Score, α
<i>Option A</i>	<i>Vehicle model is equipped with AEB City as standard equipment</i>	<i>1</i>
<i>Option B</i>	<i>Vehicle model is equipped with AEB City as optional equipment</i>	<i>0.5</i>
<i>Option C</i>	<i>Vehicle model is not equipped with AEB City</i>	<i>0</i>

Remark (if any): _____

K3.2 AEB INTER-URBAN (CCR _m & CCR _b)			
COUNTRY	AVAILABLE	NOT AVAILABLE	FITMENT TYPE
BRUNEI			
SINGAPORE			
MALAYSIA			
THAILAND			
INDONESIA			
PHILIPPINES			
VIETNAM			
LAO PDR			
CAMBODIA			

MYANMAR			
TIMOR-LESTE			

Fitment Type	Details	Fitment Rating Score, α
<i>Option A</i>	<i>Vehicle model is equipped with AEB Inter-urban as standard equipment</i>	<i>1</i>
<i>Option B</i>	<i>Vehicle model is equipped with AEB Inter-urban as optional equipment</i>	<i>0.5</i>
<i>Option C</i>	<i>Vehicle model is not equipped with AEB Inter-urban</i>	<i>0</i>

Remark (if any): _____

K3.3 LANE KEEP ASSIST			
COUNTRY	AVAILABLE	NOT AVAILABLE	FITMENT TYPE
BRUNEI			
SINGAPORE			
MALAYSIA			
THAILAND			
INDONESIA			
PHILIPPINES			
VIETNAM			
LAO PDR			
CAMBODIA			
MYANMAR			
TIMOR-LESTE			

Fitment Type	Details	Fitment Rating Score, α
<i>Option A</i>	<i>Vehicle model is equipped with LKA as standard</i>	<i>1</i>
<i>Option B</i>	<i>Vehicle model is equipped with LKA as optional</i>	<i>0.5</i>
<i>Option C</i>	<i>Vehicle model is not equipped with LKA</i>	<i>0</i>

Remark (if any): _____

K3.4 LANE DEPARTURE WARNING			
COUNTRY	AVAILABLE	NOT AVAILABLE	FITMENT TYPE
BRUNEI			
SINGAPORE			
MALAYSIA			
THAILAND			
INDONESIA			
PHILIPPINES			
VIETNAM			
LAO PDR			
CAMBODIA			
MYANMAR			
TIMOR-LESTE			

Fitment Type	Details	Fitment Rating Score, α
<i>Option A</i>	<i>Vehicle model is equipped with LDW as standard equipment</i>	<i>1</i>
<i>Option B</i>	<i>Vehicle model is equipped with LDW as optional equipment</i>	<i>0.5</i>
<i>Option C</i>	<i>Vehicle model is not equipped with LDW</i>	<i>0</i>

Remark (if any): _____

K4. ADVANCED SAFETY ASSIST TECHNOLOGIES			
K4.1 AEB PEDESTRIAN			
COUNTRY	AVAILABLE	NOT AVAILABLE	FITMENT TYPE
BRUNEI			
SINGAPORE			
MALAYSIA			
THAILAND			
INDONESIA			
PHILIPPINES			
VIETNAM			
LAO PDR			
CAMBODIA			

MYANMAR			
TIMOR-LESTE			

Fitment Type	Details	Fitment Rating Score, α
<i>Option A</i>	<i>Vehicle model is equipped with AEB Pedestrian as standard or optional equipment</i>	<i>1</i>
<i>Option B</i>	<i>Vehicle model is not equipped with AEB Pedestrian</i>	<i>0</i>

Remark (if any): _____

K4.2 MULTI COLLISION BRAKE			
COUNTRY	AVAILABLE	NOT AVAILABLE	FITMENT TYPE
BRUNEI			
SINGAPORE			
MALAYSIA			
THAILAND			
INDONESIA			
PHILIPPINES			
VIETNAM			
LAO PDR			
CAMBODIA			
MYANMAR			
TIMOR-LESTE			

Fitment Type	Details	Fitment Rating Score, α
<i>Option A</i>	<i>Vehicle model is equipped with MCB as standard or optional equipment</i>	<i>1</i>
<i>Option B</i>	<i>Vehicle model is not equipped with MCB</i>	<i>0</i>

Remark (if any): _____

K4.3 SPEED ASSISTANCE SYSTEM			
COUNTRY	AVAILABLE	NOT AVAILABLE	FITMENT TYPE
BRUNEI			
SINGAPORE			
MALAYSIA			
THAILAND			
INDONESIA			
PHILIPPINES			
VIETNAM			
LAO PDR			
CAMBODIA			
MYANMAR			
TIMOR-LESTE			

Fitment Type	Details	Fitment Rating Score, α
<i>Option A</i>	<i>Vehicle model is equipped with SA System as standard or optional equipment</i>	<i>1</i>
<i>Option B</i>	<i>Vehicle model is not equipped with SA System</i>	<i>0</i>

Remark (if any): _____

K4.4 DRIVER STATE MONITORING			
COUNTRY	AVAILABLE	NOT AVAILABLE	FITMENT TYPE
BRUNEI			
SINGAPORE			
MALAYSIA			
THAILAND			
INDONESIA			
PHILIPPINES			
VIETNAM			
LAO PDR			
CAMBODIA			
MYANMAR			
TIMOR-LESTE			

Fitment Type	Details	Fitment Rating Score, α
<i>Option A</i>	<i>Vehicle model is equipped with DSM as standard or optional equipment</i>	<i>1</i>
<i>Option B</i>	<i>Vehicle model is not equipped with DSM</i>	<i>0</i>

Remark (if any): _____

K5. XXXX			
COUNTRY	AVAILABLE	NOT AVAILABLE	FITMENT TYPE
BRUNEI			
SINGAPORE			
MALAYSIA			
THAILAND			
INDONESIA			
PHILIPPINES			
VIETNAM			
LAO PDR			
CAMBODIA			
MYANMAR			
TIMOR-LESTE			

Fitment Type	Details	Fitment Rating Score, α
<i>Option A</i>	<i>Vehicle model is equipped with XXX as standard or optional equipment</i>	<i>1</i>
<i>Option B</i>	<i>Vehicle model is not equipped with XXX</i>	<i>0</i>

Remark (if any): _____

Note: If you have more technologies to declare, please copy and paste the above table.

L. MOTORCYCLIST SAFETY

L1. BLIND SPOT TECHNOLOGY			
COUNTRY	AVAILABLE	NOT AVAILABLE	FITMENT TYPE
BRUNEI			
SINGAPORE			
MALAYSIA			
THAILAND			
INDONESIA			
PHILIPPINES			
VIETNAM			
LAO PDR			
CAMBODIA			
MYANMAR			
TIMOR-LESTE			

Fitment Type	Details	Fitment Rating Score, α
Option A	Vehicle model is equipped with BST for both nearside and offside as standard equipment	1
Option B	Vehicle model is equipped with BST for both nearside and offside as optional equipment	0.5
Option C	Vehicle model is equipped with BST for one side only as standard equipment	0.5
Option D	Vehicle model is equipped with BST for one side only as optional equipment	0.25
Option E	Vehicle model is not equipped with BST	0

Remark (if any): _____

L2. ADVANCED REAR VISUALIZATION			
COUNTRY	AVAILABLE	NOT AVAILABLE	FITMENT TYPE
BRUNEI			
SINGAPORE			
MALAYSIA			
THAILAND			
INDONESIA			

PHILIPPINES			
VIETNAM			
LAO PDR			
CAMBODIA			
MYANMAR			
TIMOR-LESTE			

Fitment Type	Details	Fitment Rating Score, α
Option A	Vehicle model is equipped with ARV as standard equipment	1
Option B	Vehicle model is equipped with ARV as optional equipment	0.5
Option C	Vehicle model is not equipped with ARV	0

Remark (if any): _____

L3. ADAPTIVE DRIVING BEAM / AUTOMATIC HIGH BEAM			
COUNTRY	AVAILABLE	NOT AVAILABLE	FITMENT TYPE
BRUNEI			
SINGAPORE			
MALAYSIA			
THAILAND			
INDONESIA			
PHILIPPINES			
VIETNAM			
LAO PDR			
CAMBODIA			
MYANMAR			
TIMOR-LESTE			

Fitment Type	Details	Fitment Rating Score, α
Option A	Vehicle model is equipped with ADB as standard equipment	1
Option B	Vehicle model is equipped with ADB as optional equipment but AHB as standard equipment	0.8
Option C	Vehicle model is not equipped with ADB but equipped with AHB as standard equipment	0.667
Option D	Vehicle model is equipped with ADB as optional and AHB as optional equipment	0.584

<i>Option E</i>	<i>Vehicle model is equipped with ADB as optional equipment and not equipped with AHB</i>	<i>0.5</i>
<i>Option F</i>	<i>Vehicle model is not equipped with ADB but equipped with AHB as optional equipment</i>	<i>0.333</i>
<i>Option G</i>	<i>Vehicle model is not equipped with either AHB or ADB</i>	<i>0</i>

Remark (if any): _____

L4. PEDESTRIAN PROTECTION			
COUNTRY	AVAILABLE	NOT AVAILABLE	FITMENT TYPE
BRUNEI			
SINGAPORE			
MALAYSIA			
THAILAND			
INDONESIA			
PHILIPPINES			
VIETNAM			
LAO PDR			
CAMBODIA			
MYANMAR			
TIMOR-LESTE			

<i>Fitment Type</i>	<i>Details</i>	<i>Fitment Rating Score, α</i>
<i>Option A</i>	<i>Vehicle model meets Pedestrian Protection (UNR 127-3)</i>	<i>1</i>
<i>Option B</i>	<i>Vehicle model meets Pedestrian Protection (UNR 127-2)</i>	<i>0.5</i>
<i>Option C</i>	<i>Vehicle model does not meet Pedestrian Protection (UNR 127)</i>	<i>0</i>

Remark (if any): _____

L5. AEB CAR TO MOTORCYCLIST			
COUNTRY	AVAILABLE	NOT AVAILABLE	FITMENT TYPE
BRUNEI			
SINGAPORE			
MALAYSIA			
THAILAND			
INDONESIA			
PHILIPPINES			

VIETNAM			
LAO PDR			
CAMBODIA			
MYANMAR			
TIMOR-LESTE			

<i>Fitment Type</i>	<i>Details</i>	<i>Fitment Rating Score, α</i>
<i>Option A</i>	<i>Vehicle model is equipped with AEB CM as standard equipment</i>	<i>1</i>
<i>Option B</i>	<i>Vehicle model is equipped with AEB CM as optional equipment</i>	<i>0.5</i>
<i>Option C</i>	<i>Vehicle model is not equipped with AEB CM</i>	<i>0</i>

Remark (if any): _____

L6. ADVANCED MOTORCYCLIST SAFETY TECHNOLOGIES			
L6.1 REAR CROSS TRAFFIC ALERT / REAR CROSS TRAFFIC BRAKING			
COUNTRY	AVAILABLE	NOT AVAILABLE	FITMENT TYPE
BRUNEI			
SINGAPORE			
MALAYSIA			
THAILAND			
INDONESIA			
PHILIPPINES			
VIETNAM			
LAO PDR			
CAMBODIA			
MYANMAR			
TIMOR-LESTE			

<i>Fitment Type</i>	<i>Details</i>	<i>Fitment Rating Score, α</i>
<i>Option A</i>	<i>Vehicle model is equipped with RCTA/RCTB as standard equipment</i>	<i>1</i>
<i>Option B</i>	<i>Vehicle model is not equipped with RCTA/RCTB</i>	<i>0</i>

Remark (if any): _____

L6.2 MOTORCYCLIST HEAD PROTECTION			
COUNTRY	AVAILABLE	NOT AVAILABLE	FITMENT TYPE
BRUNEI			
SINGAPORE			
MALAYSIA			
THAILAND			
INDONESIA			
PHILIPPINES			
VIETNAM			
LAO PDR			
CAMBODIA			
MYANMAR			
TIMOR-LESTE			

Fitment Type	Details	Fitment Rating Score, α
Option A	Vehicle model is equipped with Head Protection as standard or optional	1
Option B	Vehicle model is not equipped with Head Protection	0

Remark (if any): _____

L6.3 XXXX			
COUNTRY	AVAILABLE	NOT AVAILABLE	FITMENT TYPE
BRUNEI			
SINGAPORE			
MALAYSIA			
THAILAND			
INDONESIA			
PHILIPPINES			
VIETNAM			
LAO PDR			
CAMBODIA			
MYANMAR			
TIMOR-LESTE			

Fitment Type	Details	Fitment Rating Score, α
Option A	Vehicle model is equipped with XXX as standard or optional equipment	1
Option B	Vehicle model is not equipped with XXX	0

Remark (if any): _____

Note: If you have more technologies to declare, please copy and paste the above table.

OEMs ARE REQUIRED TO SUBMIT PROOF OF FITMENT IN THE FORM OF PRODUCT PLANNING OR COMPLETE BROCHURE BEFORE THE OFFICIAL TEST.

Coding

Fill **00** (zero-zero) for seats not available or non-related items.

ABS Variants:

4Ch-4s: 4-channel/4-sensor system	3Ch-3s: 3-channel/3-sensor system (Variant 3)	2Ch-1/2s: 2-channel/1 or 2-sensor system
--	--	---

Safety Belt System:

Item 1	Belt Type	Mention belt type by number e.g. 2 for 2-point belt or 3 for 3-point belt
Item 2	Pre-tensioner	0P (zero-P) for none; RP for retractor pre-tensioner; LP for lap pre-tensioner; DP for double pre-tensioner (retractor + lap)
Item 3	Load Limiter	0L (zero-L) for none; LL if available
Answer Sample		3-RP-0L

Child Restraint Equipment:

Item 1	Belt Fit	BO for Belt Only; BX for Belt with other fitment type
Item 2	ISOFIX	ISF (mention if available)
Item 3	Top Tether	TT (mention if available)
Item 4	Leg Support	LS (mention if available)

Item 5	Air-bag OFF	ABOM for Air-bag OFF function manually operated; ABOA for Air-bag OFF function auto-detect (mention if necessary)
Answer Sample		Example 1: ISF-TT Example 2: BO-ABOA

Airbags:

Item 1	Driver	DAB for Driver Airbag
Item 2	Front Passenger	PAB for Front Passenger Airbag
Item 3	Knee	KAB for Knee Airbag
Item 4	Side Torso	STAB for Side Torso (Thorax/Abdomen) Airbag
Item 5	Curtain	CAB for Curtain/Side Tubular Airbag
Item 6	Rear Curtain	RCAB for Rear Curtain Airbag
Item 7	Seat Cushion	SCAB for Seat Cushion Airbag
Item 8	Center Airbag	CEAB for Center Airbag
Item 9	Seatbelt Airbag	SBAB for Seatbelt Airbag
Answer Sample		Example 1: PAB-CAB

M. SEATBELT REMINDER INFORMATION

1. Vehicle information

Make	
Model	
Variant	

2. Which seats are protected by the SBR system and whether respective seats have seat occupancy detection? (Tick X as appropriate)

	Availability of SBR			Seat occupancy detection*		
	Yes	No	N/A	Yes	No	N/A
Driver						
Front Passenger						
2 nd row						
3 rd row and more						

*seat occupancy detection – defines as whether any respective seat can automatically detect whether there is occupant or not

3. Please specify the display location of the SBR signal (whichever applicable) and indicate which seat it applies (e.g. driver/ front passenger/ rear passengers).

Display location	<i>Please insert photo of the display location</i>
Driver front panel	
Centre console area	
Rear mirror area	
Glove box area	
Back of front seat	
Other location, please specify: _____	

4. Overall system description (Tick X as appropriate)

	Driver		Front Passenger		2 nd Row		3 rd row and more		
	Yes	No	Yes	No	Yes	No	Yes	No	N/A
Does the system have multiple stages?									
Initial signal									
Intermediate signal									
Final signal									

5. Specific description of the system signal & trigger for driver (Tick X as appropriate)

a. Type of signal and triggering system

	Applicable?		Signal		Trigger			
	Yes	No	Visual	Audible	Ignition ¹ ON	Speed (km/hr) ²	Distance (m) ³	Time (s) ⁴
Initial signal								
Intermediate signal								
Final signal								

¹The trigger will start once the ignition is ON

²The trigger will start once the vehicle reaches certain speed in forward motion

²The trigger will start once the vehicle reaches certain distance in forward motion

⁴The trigger will start once certain duration of time of either through engine running or vehicle in forward motion is reached

b. Visual signal characteristic

	Applicable?		Signal characteristic		
	Yes	No	Frequency	Total duration (s)	Gap(s) in the signal?
Initial signal					
Intermediate signal					
Final signal					

c. Audible signal characteristic

	Applicable?		Signal characteristic		
	Yes	No	Frequency	Total duration (s)	Gap(s) in the signal?
Initial signal					
Intermediate signal					
Final signal					

d. Does the system have the progressive audible signal, for example a change in volume/frequency? If yes, give details of the various amplitudes/ frequencies.

e. Does the system times out? If yes, the system times out after _____ seconds.

6. Specific description of the system trigger for front passenger (Tick X as appropriate) - if different from driver.

a. Type of signal and triggering system

	Applicable?		Signal		Trigger			
	Yes	No	Visual	Audible	Ignition ¹ ON	Speed (km/hr) ²	Distance (m) ³	Time (s) ⁴
Initial signal								
Intermediate signal								
Final signal								

¹The trigger will start once the ignition is ON

²The trigger will start once the vehicle reaches certain speed in forward motion

²The trigger will start once the vehicle reaches certain distance in forward motion

⁴The trigger will start once certain duration of time of either through engine running or vehicle in forward motion is reached

b. Visual signal characteristic

	Applicable?		Signal characteristic		
	Yes	No	Frequency	Total duration (s)	Gap(s) in the signal?
Initial signal					
Intermediate signal					
Final signal					

c. Audible signal characteristic

	Applicable?		Signal characteristic		
	Yes	No	Frequency	Total duration (s)	Gap(s) in the signal?
Initial signal					
Intermediate signal					
Final signal					

**d. Does the system have the progressive audible signal, for example a change in volume/frequency?
If yes, give details of the various amplitudes/ frequencies.**

e. Does the system times out? If yes, the system times out after _____ seconds.

7. Specific description of the system trigger for 2nd row passengers (Tick X as appropriate) - if different from driver/ front passenger.

a. Type of signal and triggering system

	Applicable?		Signal		Trigger			
	Yes	No	Visual	Audible	Ignition ¹ ON	Speed (km/hr) ²	Distance (m) ³	Time (s) ⁴
Initial signal								
Intermediate signal								
Final signal								

¹The trigger will start once the ignition is ON

²The trigger will start once the vehicle reaches certain speed in forward motion

³The trigger will start once the vehicle reaches certain distance in forward motion

⁴The trigger will start once certain duration of time of either through engine running or vehicle in forward motion is reached

b. Visual signal characteristic

	Applicable?		Signal characteristic		
	Yes	No	Frequency	Total duration (s)	Gap(s) in the signal?
Initial signal					
Intermediate signal					
Final signal					

c. Audible signal characteristic

	Applicable?		Signal characteristic		
	Yes	No	Frequency	Total duration (s)	Gap(s) in the signal?
Initial signal					
Intermediate signal					
Final signal					

d. Does the system have the progressive audible signal, for example a change in volume/frequency? If yes, give details of the various amplitudes/ frequencies.

e. Does the system times out? If yes, the system times out after _____ seconds.

**8. Can this system be deactivated?
If yes, please explain the mechanism.**

9. Summary of the SBR system (please explain in details).

APPENDIX II

Two-Letter Format Internet Country Code (or “country code top-level domain – ccTLD”)

AD Andorra	BA Bosnia-Herzegovina	CA Canada	DE Germany
AE United Arab Emirates	BB Barbados	CC Cocos (Keeling) Isl.	DJ Djibouti
AF Afghanistan	BD Bangladesh	CF Central African Rep.	DK Denmark
AG Antigua and Barbuda	BE Belgium	CG Congo	DM Dominica
AI Anguilla	BF Burkina Faso	CH Switzerland	DO Dominican Republic
AL Albania	BG Bulgaria	CI Ivory Coast	DZ Algeria
AM Armenia	BH Bahrain	CK Cook Islands	EC Ecuador
AN Netherland Antilles	BI Burundi	CL Chile	EE Estonia
AO Angola	BJ Benin	CM Cameroon	EG Egypt
AQ Antarctica	BM Bermuda	CN China	EH Western Sahara
AR Argentina	BN Brunei Darussalam	CO Colombia	ES Spain
AS American Samoa	BO Bolivia	CR Costa Rica	ET Ethiopia
AT Austria	BR Brazil	CS Czechoslovakia	FI Finland
AU Australia	BS Bahamas	CU Cuba	FJ Fiji
AW Aruba	BT Bhutan	CV Cape Verde	FK Falkland Isl.(Malvinas)
AZ Azerbaijan	BV Bouvet Island	CX Christmas Island	FM Micronesia
GA Gabon	BW Botswana	CY Cyprus	FO Faroe Islands
GB Great Britain (UK)	BY Belarus	CZ Czech Republic	FR France
GD Grenada	BZ Belize	JM Jamaica	FX France (European Ter.)
GE Georgia	HK Hong Kong	JO Jordan	LA Lao PDR
GH Ghana	HM Heard & McDonald Isl.	JP Japan	LB Lebanon
GI Gibraltar	HN Honduras	KE Kenya	LC Saint Lucia
GL Greenland	HR Croatia	KG Kirgizstan	LI Liechtenstein
GP Guadeloupe (Fr.)	HT Haiti	KH Cambodia	LK Sri Lanka
GQ Equatorial Guinea	HU Hungary	KI Kiribati	LR Liberia
GF Guyana (Fr.)	ID Indonesia	KM Comoros	LS Lesotho
GM Gambia	IE Ireland	KN St. Kitts Nevis Anguilla	LT Lithuania
GN Guinea	IL Israel	KP Korea (North)	LU Luxembourg
GR Greece	IN India	KR Korea (South)	LV Latvia
GT Guatemala	IO British Indian O. Terr.	KW Kuwait	LY Libya
GU Guam (US)	IQ Iraq	KY Cayman Islands	
GW Guinea Bissau	IR Iran	KZ Kazakhstan	
GY Guyana	IS Iceland		
	IT Italy		

APPENDIX II (Cont.)

Two-Letter Format Internet Country Code
(or “country code top-level domain – ccTLD”)

MA Morocco	NA Namibia	PA Panama	SA Saudi Arabia
Mc Monaco	NC New Caledonia (Fr.)	PE Peru	SB Solomon Island
MD Moldavia	NE Niger	PF Polynesia (Fr.)	SC Seychelles
MG Madagascar	NF Norfolk Island	PG Papua New	SD Sudan
MH Marshall Islands	NG Nigeria	PH Philippines	SE Sweden
ML Mali	NI Nicaragua	PK Pakistan	SG Singapore
MM Myanmar	NL Netherlands	PL Poland	SH St. Helena
MN Mongolia	NO Norway	PM St. Pierre & Miquelon	SI Slovenia
MO Macau	NP Nepal	PN Pitcairn	SJ Svalbard & Jan Mayen
MP Northern Mariana Isl.	NR Nauru	PT Portugal	SK Slovak Republic
MQ Martinique (Fr.)	NT Neutral Zone	PR Puerto Rico (US)	SL Sierra Leone
MR Mauritania	NU Niue	PW Palau	SM San Marine
MV Maldives	NZ New Zealand	PY Paraguay	SN Senegal
MW Malawi	OM Oman	RE Reunion (Fr.)	SO Somalia
MX Mexico	QA Qatar	RO Romania	SR Suriname
MY Malaysia		RU Russian Federation	ST St. Tome and Principe
MZ Mozambique		RW Rwanda	SU Soviet Union
TC Turks & Caicos Isl.	UA Ukraine	WF Wallis & Futuna Isl.	SV El Salvador
TD Chad	UG Uganda	WS Samoa	SY Syria
TF French Southern Terr.	UK United Kingdom		SZ Swaziland
TG Togo	UM US Minor outlying Isl.		<i>Note: ASEAN Countries in Bold & Blue</i>
TH Thailand	US United States		
TJ Tajikistan	UY Uruguay		
TK Tokelau	UZ Uzbekistan		
TL Timor-Leste			
TM Turkmenistan	VA Vatican City State	YE Yemen	
TN Tunisia	VC St. Vincent & Grenadines	YU Yugoslavia	
TO Tonga	VE Venezuela		
TR Turkey	VG Virgin Islands (British)		
TT Trinidad & Tobago	VI Virgin Island (US)	ZA South Africa	
TV Tuvalu	VN Vietnam	ZM Zambia	
TW Taiwan	VU Vanuatu	ZR Zaire	
TZ Tanzania		ZW Zimbabwe	

Editors

Salina Mustaffa
Malaysian Institute of Road Safety Research (MIROS)

Ts. Yahaya Ahmad
Malaysian Institute of Road Safety Research (MIROS)

Dr. Fauziana Lamin
Malaysian Institute of Road Safety Research (MIROS)

Ts. Noor Faradila Paiman
Malaysian Institute of Road Safety Research (MIROS)

Ts. Mohd Amirudin Mohamad Radzi
Malaysian Institute of Road Safety Research (MIROS)

Ts. Nurulhana Borhan
Malaysian Institute of Road Safety Research (MIROS)

Hamizah Makhpol
Malaysian Institute of Road Safety Research (MIROS)

Ts. Zulhaidi Mohd Jawi
Malaysian Institute of Road Safety Research (MIROS)

Assoc. Prof. Ir. Ts. Dr. Siti Zaharah binti Ishak
Malaysian Institute of Road Safety Research (MIROS)



ASEAN NCAP **PROTOCOL** 2026-2030



ASEAN NCAP

c/o MIROS

**Ground Floor, Lot 127,
Jalan TKS 1,
Taman Kajang Sentral,
43000 Kajang,
Selangor, Malaysia.**



+603-8924 9200



aseancapmedia@miros.gov.my



www.aseancap.org



<https://www.facebook/AseanNcap>



<https://twitter.com/aseancap>



<https://www.instagram.com/aseancap>



<https://www.tiktok.com/@aseancap>



<https://www.youtube.com/@aseancapofficial>