

BYD SEAL



Variant RWD (650KM)	Year Built 2025
Model Year 2025	Vehicle Category Sedan
ENGINE Capacity 230Kw	Kerb Mass 2055 kg
No. of Airbags 9	Test Lab CAERI

TESTED VARIANT ORIGIN	CHINA	FOR	INDONESIA, MALAYSIA, SINGAPORE, THAILAND
OTHER ASEAN PRODUCTION (ALL VARIANTS)	CHINA	FOR	MALAYSIA, PHILIPPINES, THAILAND, VIETNAM, SINGAPORE, BRUNEI, INDONESIA, MYANMAR

ADULT OCCUPANT PROTECTION 	FRONTAL IMPACT	SIDE IMPACT	HEAD PROTECTION TECHNOLOGY	TOTAL
	14.75	8.00	8.00	30.75

FRONTAL IMPACT

DRIVER PASSENGER

- GOOD
- ADEQUATE
- MARGINAL
- WEAK
- POOR

No Modifier

The sedan's frontal occupant compartment remained stable in the frontal offset test. Data obtained from the test dummy showed there was adequate protection to the passenger's chest and right lower leg. In addition, the driver's foot and ankle received adequate protection in the test too.

SIDE IMPACT

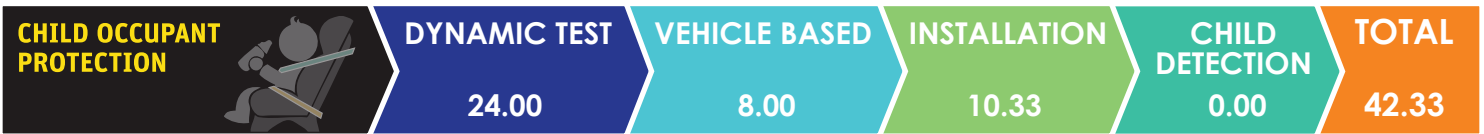
- GOOD
- ADEQUATE
- MARGINAL
- WEAK
- POOR

No Modifier

The performance of HPT was confirmed with additional deployment test and its score was determined by Fitment Rating System (FRS).

SAFETY ITEMS (PASSIVE)

ITEMS		REGION	ASEAN
Airbags	Driver		Standard on all variants
	Passenger		Standard on all variants
	Side (4)		Standard on all variants
	Curtain (2)		Standard on all variants
	Knee		Not available
	Center		Standard on all variants
Seatbelts	Double Pre-tensioner & Load Limiter for Driver		Standard on all variants
	Double Pre-tensioner & Load Limiter for Passenger		Standard on all variants



DYNAMIC TEST ASSESSMENT

18-MONTH-OLD CHILD		3-YEAR-OLD CHILD	
Restraint	: Joie i-Spin 360	Restraint	: Joie i-Spin 360
Facing	: Rearward Facing	Facing	: Rearward Facing
Installation	: ISOFIX and Supportleg	Installation	: ISOFIX and Supportleg
Frontal Impact	: 8.00	Frontal Impact	: 8.00
Side Impact	: 4.00	Side Impact	: 4.00
Total Performance	: 12.00	Total Performance	: 12.00

CRS INSTALLATION ASSESSMENT

CRS	DIRECTION	SEAT POSITION						
		FRONT	2ND ROW			3RD ROW		
		PASSENGER	LEFT	CENTRE	RIGHT	LEFT	CENTRE	RIGHT
Peg-Perego Primo Viaggio SL	Rwd	PASS	PASS	FAIL	PASS	N/A	N/A	N/A
Joie Stages	Rwd	PASS	PASS	FAIL	PASS	N/A	N/A	N/A
Joie Stages	Fwd	PASS	PASS	FAIL	PASS	N/A	N/A	N/A
Combi Buon Junior Air	Fwd	PASS	PASS	FAIL	PASS	N/A	N/A	N/A
Maxi Cosi Cabriofix + Family Fix	Rwd	PASS	PASS	EXEMPT	PASS	N/A	N/A	N/A
Joie Every Stage Fx	Fwd	PASS	PASS	EXEMPT	PASS	N/A	N/A	N/A
Joie Every Stage Fx	Rwd	PASS	PASS	FAIL	PASS	N/A	N/A	N/A
Maxi Cosi Titan Pro	Fwd	PASS	PASS	EXEMPT	PASS	N/A	N/A	N/A
Britax KidFix 2 R	Fwd	PASS	PASS	FAIL	PASS	N/A	N/A	N/A
Joie i-Spin 360	Rwd	PASS	PASS	EXEMPT	PASS	N/A	N/A	N/A
Joie i-Spin 360	Rwd	PASS	PASS	EXEMPT	PASS	N/A	N/A	N/A

PASS : Install without problem, FAIL : Safety critical problem, EXEMPT : Installation not allowed, N/A : Not available
 *Manufacturer's selection



ITEMS	ASEAN
--------------	--------------

Effective Braking & Avoidance
--

Anti-lock Braking System	Standard on all variants
Electronic Stability Control	Standard on all variants

Seatbelt Reminders

Driver	Standard on all variants
Front Passenger	Standard on all variants
Rear Passengers	Available as standard or optional
Rear Seat Occupant Detection	Available as standard or optional

Autonomous Emergency Braking

City	Standard on all variants
Inter-Urban	Standard on all variants
Pedestrian	Standard on all variants

Advanced Safety Assist Technologies
--

Lane Departure Warning System	Standard on all variants
Forward Collision Warning System	Standard on all variants
Lane Keep Assist	Standard on all variants

AUTONOMOUS EMERGENCY BRAKING ASSESSMENT
--

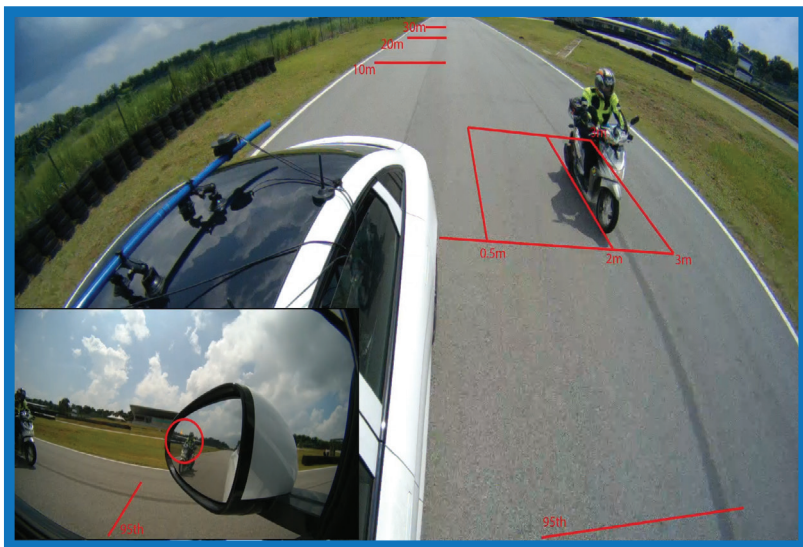


ASEAN NCAP introduces the Autonomous Emergency Braking (AEB) system functionality assessment under the current 2021-2025 protocol. In the protocol, ASEAN NCAP assessed the functionality and effectiveness of AEB City (car-to-car rear stationary) and AEB Inter-Urban (car-to-car rear moving) systems fitted inside the vehicle in performing emergency braking at several speeds against another preceding vehicle. The new BYD SEAL offers both the AEB City and Inter-Urban systems as standard across all its variants. In this assessment, ASEAN NCAP confirms the technologies have functioned according to the ASEAN NCAP requirements.

MOTORCYCLIST SAFETY 	BLIND SPOT DETECTION	REAR VISUALIZATION	HEADLIGHT	PEDESTRIAN	ADVANCED MST	TOTAL
	8.00	0.00	2.00	2.00	2.00	14.00

ITEMS	ASEAN
Blind Spot Detection	
Nearside	Standard on all variants
Offside	Standard on all variants
Rear Visualization	
Advanced Rear Visualization	Not available
Headlight	
Auto High Beam	Standard on all variants
Pedestrian	
Pedestrian Protection	Standard on all variants
Advanced Motorcyclist Safety Technology	
AEB for Motorcycle	Standard on all variants

BLIND SPOT DETECTION ASSESSMENT





Starting from the 2017-2020 protocol, ASEAN NCAP introduced an assessment on the functionality of Blind Spot Technology fitted inside the assessed vehicle. ASEAN NCAP continues the assessment under the new Motorcyclist Safety pillar for the current 2021-2025 protocol. The new BYD Seal is equipped with Blind Spot Detection (BSD) on both sides of the vehicle as standard fitment across all its variants. In the assessment, ASEAN NCAP confirms the technology has functioned according to the ASEAN NCAP requirements on both sides of the vehicle.



OVERALL RATING

This is the first assessment that ASEAN NCAP conducted for the model under the BYD brand. The BYD Seal made a remarkable performance in the assessment with various safety assist technologies available in the model. The sedan is equipped with 9 airbags, Electronic Stability Control (ESC), Anti-lock Braking System (ABS), Autonomous Emergency Braking (AEB) City, AEB Inter-Urban, AEB Pedestrian, Lane Departure Warning (LDW), Forward Collision Warning (FCW), Lane Keep Assist (LKA), Blind Spot Detection (BSD) on both sides of the vehicle, Auto High Beam (AHB), Pedestrian Protection (PP), ISOFIX for child seat and AEB for Motorcycle as standard features across all its variants. The Seatbelt Reminder System (SBR) for the BYD Seal is available as standard fitment for frontal, rear seat occupants and also fitted with rear occupant detection in all its variants. Nevertheless, only the Philippines and Vietnam markets offer SBR as standard equipment for both frontal occupants with rear passengers are offered as optional. The BYD Seal achieved an impressive score of 92.07 points accumulated from all the four assessed categories. The overall score has made the model to be awarded with 5-Star ASEAN NCAP rating.

	AOP			COP			SAFETY ASSIST			MS			2021 - 2025 ASEAN NCAP RATING
	Item	Point	Max	Item	Point	Max	Item	Point	Max	Item	Point	Max	
	ODB	14.75	16.00	FRONTAL	16.00	16.00	EBA	6.00	6.00	BSD/BSV	8.00	8.00	
	SIDE	8.00	8.00	SIDE	8.00	8.00	SBR	5.50	6.00	ARV	-	4.00	
	HPT Evaluation	8.00	8.00	Installation	10.33	12.00	AEB City	2.50	2.50	AHB	2.00	2.00	
				Vehicle Based	8.00	13.00	AEB Inter-Urban	3.50	3.50	Ped. Protection	2.00	2.00	
				CPD	-	2.00	Advanced SATs	3.00	3.00	Advanced MST*	2.00	2.00	
Score		30.75	32.00		42.33	51.00		20.50	21.00		14.00	16.00	
Normalized Score		0.96			0.83			0.98			0.875		
Weighting		40%			20%			20%			20%		
Weighted Score		38.44			16.60			19.52			17.50		
Maximum Star Rating		5			5			5			5		
OVERALL SCORE												92.07	
OVERALL RATING												5	

*Bonus Point