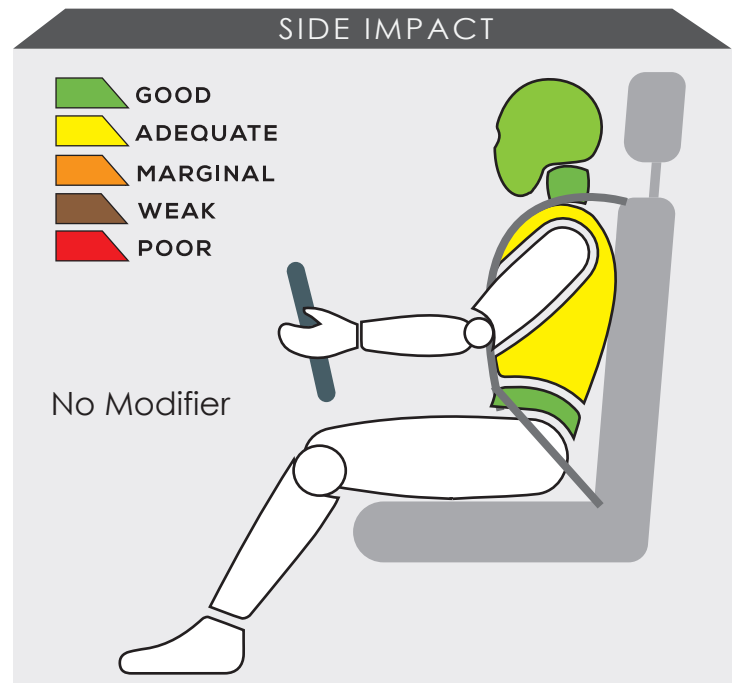
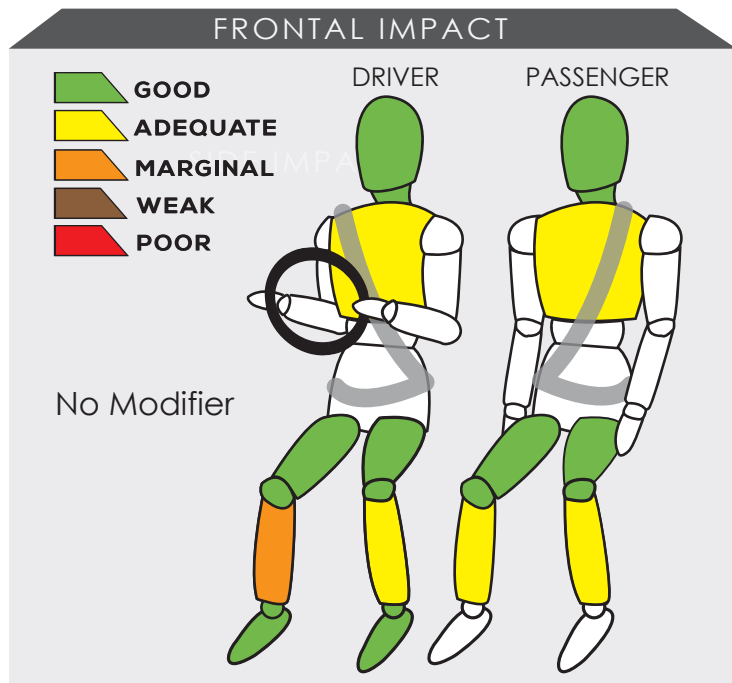


SUZUKI FRONX



Variant 1.5 6AT	Year Built 2025
Model Year 2025	Vehicle Category COMPACT SUV
Engine Capacity 1.5 L	Kerb Mass 1060 kg
No. of Airbags 6	Test Lab PC3

TESTED VARIANT ORIGIN	INDONESIA	FOR	INDONESIA, CAMBODIA, LAOS, MALAYSIA, PHILIPPINES, THAILAND, VIETNAM
OTHER ASEAN PRODUCTION (ALL VARIANTS)	INDONESIA	FOR	INDONESIA, CAMBODIA, LAOS, MALAYSIA, PHILIPPINES, THAILAND, VIETNAM

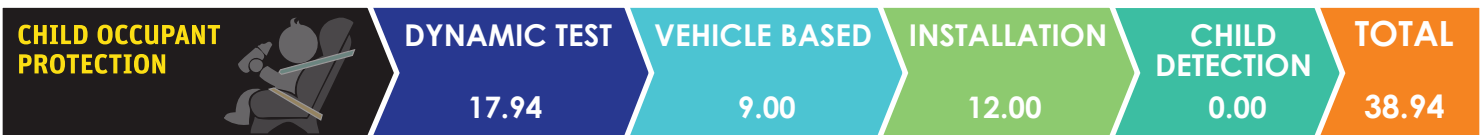


The compact SUV's frontal occupant compartment remained stable in the frontal offset test. Data obtained from the test dummy showed there was adequate protection to both of the occupants' chests. In addition, the driver's right lower leg received marginal protection in the test.

The driver's chest received adequate protection in the side impact test.

SAFETY ITEMS (PASSIVE)

ITEMS		REGION	ASEAN
Airbags	Driver		Standard on all variants
	Passenger		Standard on all variants
	Side (2)		Standard on all variants
	Curtain (2)		Standard on all variants
	Knee		Not Available
Seatbelts	Retractor Pre-tensioner & Load Limiter for Driver		Standard on all variants
	Retractor Pre-tensioner & Load Limiter for Passenger		Standard on all variants



DYNAMIC TEST ASSESSMENT

18-MONTH-OLD CHILD		3-YEAR-OLD CHILD	
Restraint	: Britax Römer Baby Safe 3 i-Size	Restraint	: Britax Römer Trifix 2 i-Size
Facing	: Rearward Facing	Facing	: Forward Facing
Installation	: ISOFIX & Supportleg	Installation	: ISOFIX & TopTether
Frontal Impact	: 8.00	Frontal Impact	: 1.94
Side Impact	: 4.00	Side Impact	: 4.00
Total Performance	: 12.00	Total Performance	: 5.94

CRS INSTALLATION ASSESSMENT

CRS	DIRECTION	SEAT POSITION						
		FRONT	2ND ROW			3RD ROW		
		PASSENGER	LEFT	CENTRE	RIGHT	LEFT	CENTRE	RIGHT
Peg-Perego Primo Viaggio SL	Rwd	EXEMPT	PASS	PASS	PASS	N/A	N/A	N/A
Joie Stages	Rwd	EXEMPT	PASS	PASS	PASS	N/A	N/A	N/A
Joie Stages	Fwd	PASS	PASS	PASS	PASS	N/A	N/A	N/A
Combi Buon Junior Air	Fwd	PASS	PASS	PASS	PASS	N/A	N/A	N/A
Maxi Cosi Cabriofix + Family Fix	Rwd	EXEMPT	PASS	EXEMPT	PASS	N/A	N/A	N/A
Joie Every Stage Fx	Fwd	EXEMPT	PASS	EXEMPT	PASS	N/A	N/A	N/A
Joie Every Stage Fx	Rwd	EXEMPT	PASS	PASS	PASS	N/A	N/A	N/A
Maxi Cosi Titan Pro	Fwd	EXEMPT	PASS	EXEMPT	PASS	N/A	N/A	N/A
Britax KidFix 2 R	Fwd	PASS	PASS	PASS	PASS	N/A	N/A	N/A
Britax Römer Baby Safe 3 i-size*	Rwd	EXEMPT	PASS	EXEMPT	PASS	N/A	N/A	N/A
Britax Römer Trifix 2 i-size*	Fwd	EXEMPT	PASS	EXEMPT	PASS	N/A	N/A	N/A

PASS : Install without problem, FAIL : Safety critical problem, EXEMPT : Installation not allowed, N/A : Not available
 *Manufacturer's selection



ITEMS	ASEAN
--------------	--------------

Effective Braking & Avoidance
--

Anti-lock Braking System	Standard on all variants
Electronic Stability Control	Standard on all variants

Seatbelt Reminders

Driver	Standard on all variants
Front Passenger	Standard on all variants
Rear Passengers	Standard on all variants
Rear Seat Occupant Detection	Not available

Autonomous Emergency Braking

City	Available as optional
Inter-Urban	Available as optional
Pedestrian	Not available

Advanced Safety Assist Technologies
--

Lane Departure Warning System	Available as standard or optional
Forward Collision Warning System	Available as standard or optional
Lane Keep Assist	Available as standard or optional

AUTONOMOUS EMERGENCY BRAKING ASSESSMENT
--

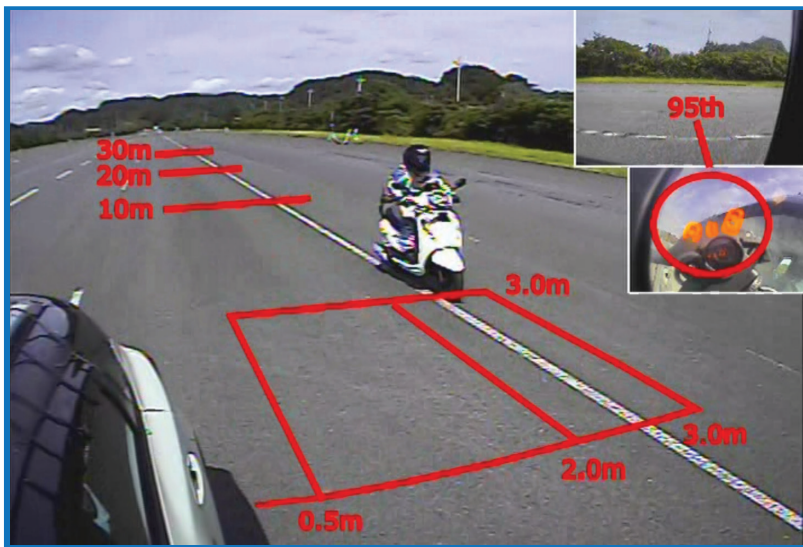


ASEAN NCAP introduces the Autonomous Emergency Braking (AEB) system functionality assessment in its new 2021-2025 protocol. In the protocol, ASEAN NCAP assessed the functionality and effectiveness of AEB City and AEB Inter-Urban systems fitted inside the vehicle in performing emergency braking at several speeds against another preceding vehicle. The Suzuki FRONX is equipped with both the AEB City and Inter-Urban systems as optional across all its variants. In this assessment, ASEAN NCAP confirms the technologies have functioned according to the ASEAN NCAP requirements.

MOTORCYCLIST SAFETY 	BLIND SPOT DETECTION	REAR VISUALIZATION	HEADLIGHT	PEDESTRIAN	ADVANCED MST	TOTAL
	4.80	0.00	1.20	2.00	0.00	8.00

ITEMS	ASEAN
Blind Spot Detection	
Nearside	Available as optional
Offside	Available as optional
Rear Visualization	
Advanced Rear Visualization	Not available
Headlight	
Auto High Beam	Available as optional
Pedestrian	
Pedestrian Protection	Standard on all variants
Advanced Motorcyclist Safety Technology	
Nil	-

BLIND SPOT DETECTION ASSESSMENT





Starting from the 2017-2020 protocol, ASEAN NCAP introduced an assessment on the functionality of Blind Spot Technology fitted inside the assessed vehicle. ASEAN NCAP continues the assessment under the new Motorcyclist Safety pillar for the current 2021-2025 protocol. The new Suzuki FRONX is equipped with Blind Spot Detection (BSD) on both sides of the vehicle as an optional fitment. In the assessment, ASEAN NCAP confirms the technology has functioned according to the ASEAN NCAP requirements on both sides of the vehicle.



OVERALL RATING

The newly released Suzuki FRONX is the latest lineup under the Suzuki brand that underwent ASEAN NCAP assessment. The compact SUV is equipped with 6 airbags, Electronic Stability Control (ESC), Anti-lock Braking System (ABS) Seatbelt Reminder System (SBR) for both frontal and rear seat occupants, Pedestrian Protection (PP) and ISOFIX for child seats as standard features in all its variants. In addition, the model has several safety technologies that are fitted either as standard or optional equipment comprising the Lane Departure Warning (LDW), Forward Collision Warning (FCW) and Lane Keep Assist (LKA). Technologies consisting of Autonomous Emergency Braking (AEB) City, Inter-Urban, Blind Spot Detection (BSD) for both offside and nearside of the vehicle and Auto High Beam (AHB) are available as optional fitment. Regardless, the brand has ensured that both BSD and AHB technologies are offered as standard fitment for the FRONX that are sold in the Malaysian market. The new Suzuki FRONX performed well under the current 2021-2025 ASEAN NCAP assessment protocol by obtaining an overall score of 77.70 points. Based on the achieved scores have made the new Suzuki FRONX eligible to be awarded with 5-Star ASEAN NCAP rating.

	AOP			COP			SAFETY ASSIST			MS			2021 - 2025 ASEAN NCAP RATING
	Item	Point	Max	Item	Point	Max	Item	Point	Max	Item	Point	Max	
	ODB	13.74	16.00	FRONTAL	9.94	16.00	EBA	6.00	6.00	BSD/BSV	4.80	8.00	
	SIDE	7.63	8.00	SIDE	8.00	8.00	SBR	4.50	6.00	ARV	-	4.00	
	HPT Evaluation	8.00	8.00	Installation	12.00	12.00	AEB City	1.25	2.50	AHB	1.20	2.00	
				Vehicle Based	9.00	13.00	AEB Inter-Urban	1.75	3.50	Ped. Protection	2.00	2.00	
				CPD	-	2.00	Advanced SATs	3.00	3.00	Advanced MST*	-	2.00	
Score		29.37	32.00		38.94	51.00		16.50	21.00		8.00	16.00	OVERALL SCORE 77.70 5
Normalized Score		0.92			0.76			0.79			0.50		
Weighting		40%			20%			20%			20%		
Weighted Score		36.71			15.27			15.71			10.00		
Maximum Star Rating		5			5			5			5		

*Bonus Point