

MAZDA 2

ASEAN NCAP PHASE II



VARIANT MZR 1.5 DOHC

YEAR BUILT 2013

MODEL YEAR 2012

VEHICLE CATEGORY SEDAN

ENGINE CAPACITY 1.5 L PETROL

KERB MASS 1084

TEST LAB

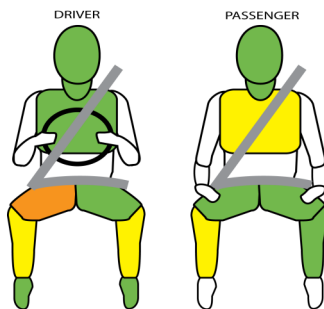


TESTED VARIANT ORIGIN	THAILAND	FOR	BRUNEI, INDONESIA, MALAYSIA, SINGAPORE
OTHER ASEAN PRODUCTION	THAILAND (Sedan)	FOR	THAILAND, CAMBODIA, LAOS, PHILIPPINES
	THAILAND (Hatch)	FOR	THAILAND, INDONESIA, MALAYSIA, PHILIPPINES
	VIETNAM (Hatch)	FOR	VIETNAM
OTHER PRODUCTION	JAPAN (Hatch)	FOR	BRUNEI, INDONESIA, SINGAPORE, VIETNAM

Mazda 2 is available in both sedan and hatchback versions, which the former from Thailand production is tested in this test phase. The tested sedan variant is available for Brunei, Indonesia, Malaysia and Singapore market, while the variant targeted for the Thailand market is without SBR for the front passenger. In addition to that, the latter in left hand drive (LHD) version is also available for Cambodia, Laos and Philippines market (SBR for driver only). Mazda sets all range come standard with ABS, but no ESC for all variants available for ASEAN. This sedan version of Mazda 2 scored 13.10 in the Adult Occupant Protection (AOP) and 78% in the Child Occupant Protection (COP) ratings, which places it in the 4-star category. All Mazda 2 variants produced in Thailand (single source of production) for both sedan and hatchback version should share the same rating.



AOP POINTS 13.10



MODIFIER Driver upper leg concentrated loading & variable contact for right knee.

SAFETY ITEMS		TESTED VARIANT	OTHER ASEAN VARIANT
AIRBAGS	DAB : PAB	S : S	S : S
SBR	Driver : Front Passenger	S : S	S : V
SEATBELT	Retractor Pre-tensioner & Load Limiter for Driver	S	S
	Retractor Pre-tensioner & Load Limiter for Front Passenger	S	S
3-POINT BELT	All Forward Facing Seats	S (V for 2nd Row Middle Seat)	S (V for 2nd Row Middle Seat)
ABS	Anti-lock Braking System	S	S
ESC	Stability Control	X	X

Key:

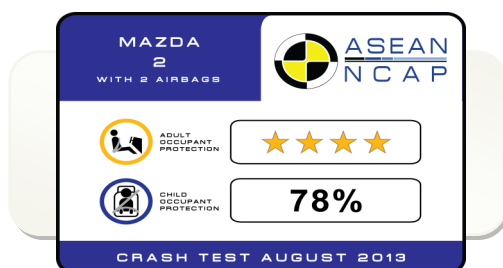
S : Standard on all variants

O : Optional on base; Standard on higher variants

V : Not available on base; Standard/Optional on higher variants

X : Not available

ESC & SBR required for 5-Star rating from 2012

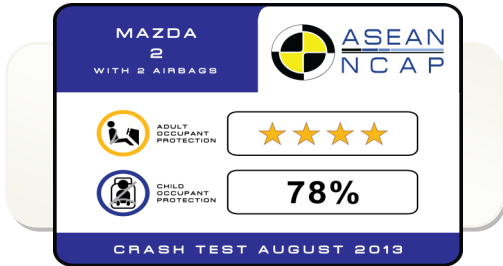


MAZDA 2

ASEAN NCAP PHASE II



COP Compliance **78%**



CRS TYPE	P3	P1.5
ATTACHMENT	ISOFIX + Seatbelt	ISOFIX
BRAND	Britax Duo Plus	Britax Baby Safe Plus SHR II Britax Baby Safe ISOFIX Base

CHILD OCCUPANT PROTECTION

Dynamic Test (max. 24)	CRS Based Assessment (max. 12)	Vehicle Based Assessment (max. 13)	TOTAL (max. 49)	Compliance (%)
22.06	12	4	38.06	78

