

NISSAN ALMERA

ASEAN NCAP PHASE II



VARIANT 1.2 BASE (E) CVT

YEAR BUILT 2013

MODEL YEAR 2013

VEHICLE CATEGORY SEDAN

ENGINE CAPACITY 1.2 L PETROL

KERB MASS 1015

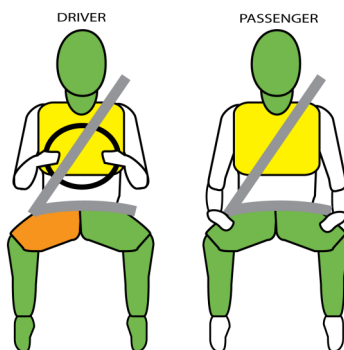
TEST LAB 

TESTED VARIANT ORIGIN	THAILAND	FOR	THAILAND, SINGAPORE, BRUNEI
OTHER ASEAN PRODUCTION	MALAYSIA	FOR	MALAYSIA
	PHILIPPINES	FOR	PHILIPPINES
	VIETNAM	FOR	VIETNAM

Nissan Almera is produced in Thailand and Malaysia, in which the tested Thailand variant can be considered as the base model for ASEAN by virtue of higher specifications for the Malaysian production. Thailand is the main market for Almera followed by Malaysia, Vietnam, Singapore, Philippines, and Brunei. The absence of Anti-lock Braking System (ABS) and Seat Belt Reminder is what makes the difference between the tested variant and its Malaysian production counterpart. This particular car scored 12.74 in the Adult Occupant Protection (AOP) and 52% in the Child Occupant Protection (COP) ratings, which places it in the 4-star category.



AOP POINTS 12.74

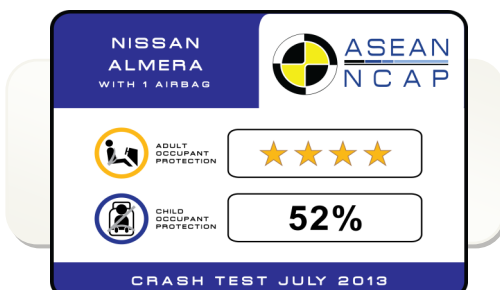


MODIFIER Driver upper leg concentrated loading & variable contact for right knee.

SAFETY ITEMS		TESTED VARIANT	OTHER ASEAN VARIANT
AIRBAGS	DAB : PAB	S : X	S : V
SBR	Driver : Front Passenger	X : X	V : X
SEATBELT	Retractor Pre-tensioner & Load Limiter for Driver	X	V
	Retractor Pre-tensioner & Load Limiter for Front Passenger	X	X
3-POINT BELT	All Forward Facing Seats	S (V for 2nd Row Middle Seat)	S (V for 2nd Row Middle Seat)
ABS	Anti-lock Braking System	X	V
ESC	Stability Control	X	V

Key:

- S : Standard on all variants
- O : Optional on base; Standard on higher variants
- V : Not available on base; Standard/Optional on higher variants
- X : Not available
- # ESC & SBR required for 5-Star rating from 2012



NISSAN ALMERA

ASEAN NCAP PHASE II



COP Compliance **52 %**

NISSAN ALMERA
WITH 1 AIRBAG

ASEAN NCAP

ADULT OCCUPANT PROTECTION ★★★★

CHILD OCCUPANT PROTECTION 52%

CRASH TEST JULY 2013

CRS TYPE	P3	P1.5
ATTACHMENT	Seatbelt	Seatbelt
BRAND	Britax Duo Plus	Britax Baby Safe Plus SHR II

CHILD OCCUPANT PROTECTION

Dynamic Test (max. 24)	CRS Based Assessment (max. 12)	Vehicle Based Assessment (max. 13)	TOTAL (max. 49)	Compliance (%)
10.56	12	3	25.56	52

