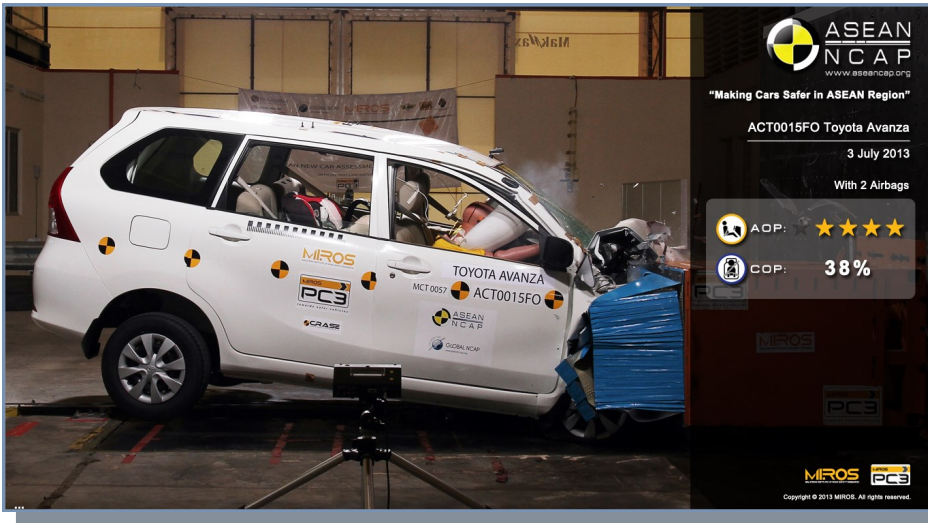


# TOYOTA AVANZA

## ASEAN NCAP PHASE II



VARIANT **1.3 E M/T**

YEAR BUILT **2013**

MODEL YEAR **2013**

VEHICLE CATEGORY **MPV**

ENGINE CAPACITY **1.3 L PETROL**

KERB MASS **1065**

TEST LAB



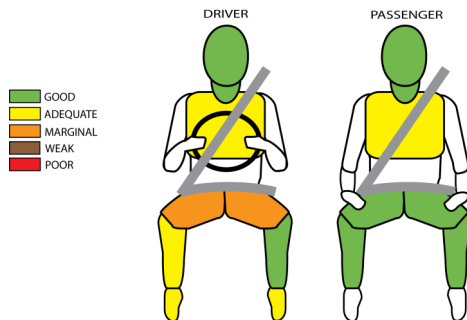
TESTED VARIANT ORIGIN	INDONESIA	FOR	INDONESIA
OTHER ASEAN PRODUCTION	INDONESIA	FOR	INDONESIA, BRUNEI, THAILAND, SINGAPORE, MALAYSIA, PHILIPPINES, LAOS, VIETNAM

As of today, Indonesia is the only source of production for Toyota Avanza for ASEAN market with more than 20 variants available in the whole region, primarily distinguished by the transmission type (manual or automatic) and the fitment of Anti-lock Braking System (ABS). However, Toyota set a standard for this particular model to be fitted with two airbags for both driver and front passenger and seat belt reminder (SBR) for the driver on all variants. This particular MPV scored 12.98 in the Adult Occupant Protection (AOP) and 38% in the Child Occupant Protection (COP) ratings, which places it in the 4-star category.



ADULT OCCUPANT PROTECTION

AOP POINTS **12.98**



MODIFIER **Driver upper leg concentrated loading & variable contact for both knees.**

	SAFETY ITEMS	TESTED VARIANT	OTHER ASEAN VARIANT
AIRBAGS	DAB : PAB	S : S	S : S
SBR	Driver : Front Passenger	S : X	S : X
SEATBELT	Retractor Pre-tensioner & Load Limiter for Driver	S	S
	Retractor Pre-tensioner & Load Limiter for Front Passenger	S	S
3-POINT BELT	All Forward Facing Seats	S (X for 2nd Row Middle Seat)	S (X for 2nd Row Middle Seat)
ABS	Anti-lock Braking System	X	V
ESC	Stability Control	X	X

### Key:

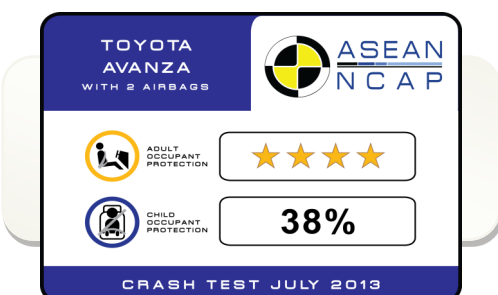
S : Standard on all variants

O : Optional on base; Standard on higher variants

V : Not available on base; Standard/Optional on higher variants

X : Not available

# ESC & SBR required for 5-Star rating from 2012



# TOYOTA AVANZA

ASEAN NCAP PHASE II



COP Compliance **38 %**



CRS TYPE	<b>P3</b>	<b>P1.5</b>
ATTACHMENT	Seatbelt	Seatbelt
BRAND	Britax Duo Plus	Britax Baby Safe Plus SHR II

## CHILD OCCUPANT PROTECTION

Dynamic Test (max. 24)	CRS Based Assessment (max. 12)	Vehicle Based Assessment (max. 13)	TOTAL (max. 49)	Compliance (%)
3.47	12	3	18.47	38

