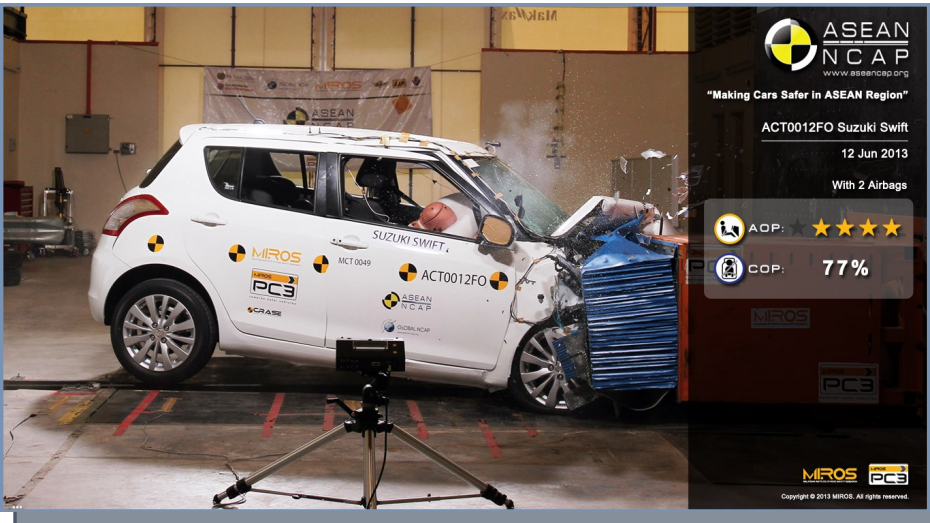


SUZUKI SWIFT

ASEAN NCAP PHASE II



VARIANT GLX 1.4 L

YEAR BUILT 2013

MODEL YEAR 2013

VEHICLE CATEGORY HATCHBACK

ENGINE CAPACITY 1.4 L PETROL

KERB MASS 1000

TEST LAB

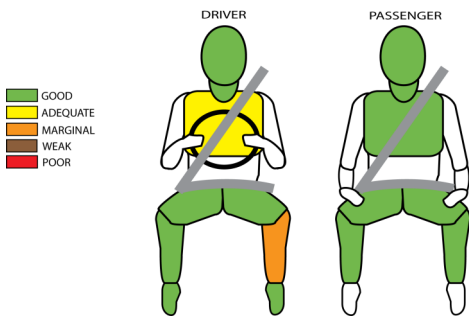


TESTED VARIANT ORIGIN	MALAYSIA	FOR	MALAYSIA
OTHER ASEAN PRODUCTION	THAILAND	FOR	INDONESIA, THAILAND

Suzuki Swift is produced only in Malaysia and Thailand, with the CBU from Japan is also available for ASEAN market. The tested variant is for Malaysian market, in which Suzuki sets this model to have ABS as standard fit and no ESC available in the said market. This particular hatchback scored 13.32 in the Adult Occupant Protection (AOP) and 77% in the Child Occupant Protection (COP) ratings, which places it in the 4-star category.



AOP POINTS 13.32



MODIFIER No modifier

	SAFETY ITEMS	TESTED VARIANT	OTHER ASEAN VARIANT
AIRBAGS	DAB : PAB	S : S	V : V
SBR	Driver : Front Passenger	S : X	S : X
SEATBELT	Retractor Pre-tensioner & Load Limiter for Driver	S	X
	Retractor Pre-tensioner & Load Limiter for Front Passenger	S	X
3-POINT BELT	All Forward Facing Seats	S	S (V for 2nd Row Middle Seat)
ABS	Anti-lock Braking System	S	V
ESC	Stability Control	X	X

Key:

S : Standard on all variants

O : Optional on base; Standard on higher variants

V : Not available on base; Standard/Optional on higher variants

X : Not available

ESC & SBR required for 5-Star rating from 2012



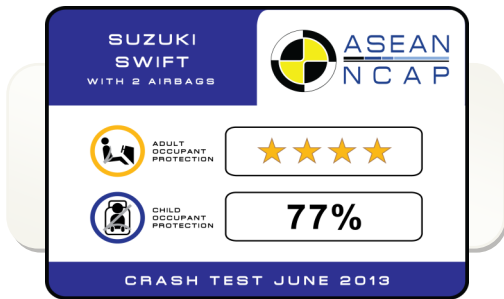
SUZUKI SWIFT

ASEAN NCAP PHASE II



CHILD OCCUPANT PROTECTION

COP Compliance **77%**



CRS TYPE	P3	P1.5
ATTACHMENT	ISOFIX + Top Tether	ISOFIX + Top Tether
BRAND	Britax Duo Plus	Britax Duo Plus

CHILD OCCUPANT PROTECTION

Dynamic Test (max. 24)	CRS Based Assessment (max. 12)	Vehicle Based Assessment (max. 13)	TOTAL (max. 49)	Compliance (%)
19.68	12	6	37.68	77

