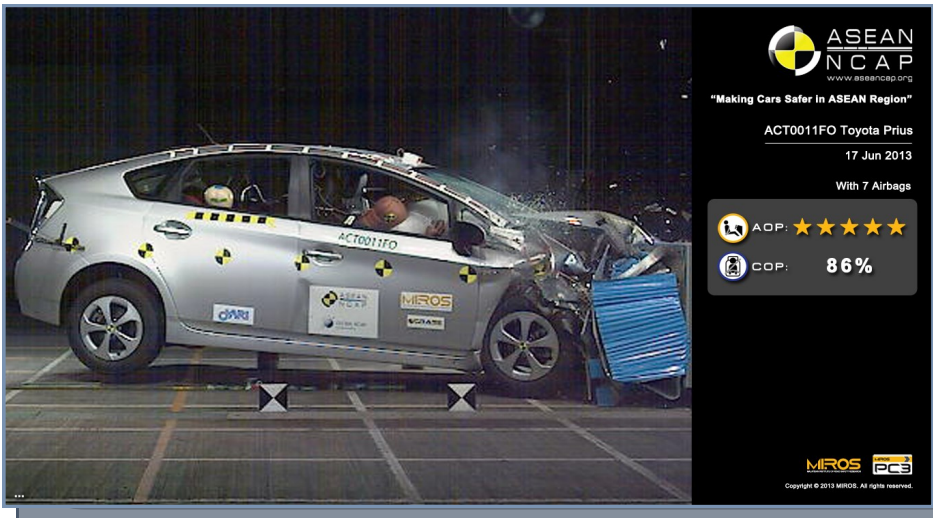


# TOYOTA PRIUS

## ASEAN NCAP PHASE II



**ASEAN NCAP**
  
www.aseanncap.org
  
 "Making Cars Safer in ASEAN Region"

ACT0011FO Toyota Prius
   
 17 Jun 2013
   
 With 7 Airbags

AOP ★★★★★
   
 COP: 86%

Copyright © 2013 MIROS. All rights reserved.

**VARIANT 1.8 L HYBRID**

**YEAR BUILT 2013**

**MODEL YEAR 2013**

**VEHICLE CATEGORY HATCHBACK**

**ENGINE CAPACITY 1.8 L PETROL**

**KERB MASS 1425**

**TEST LAB**

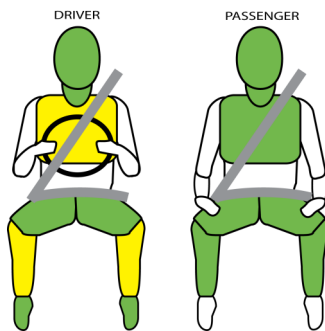
TESTED VARIANT ORIGIN	JAPAN	FOR	INDONESIA, MALAYSIA, PHILIPPINES, SINGAPORE, BRUNEI
OTHER ASEAN PRODUCTION	THAILAND	FOR	THAILAND

Toyota Prius is the only hybrid car tested in the ASEAN NCAP to date, in which the tested variant is produced in Japan for five ASEAN market countries. The same variant is also produced in Thailand for its domestic market with similar specifications, and so far become the main Prius market in the ASEAN. Toyota keeps the same specifications on the safety features for ASEAN market with 7 airbags and ISOFIX for Child Restraint System (CRS). This particular car scored 15.30 in the Adult Occupant Protection (AOP) and 86% in the Child Occupant Protection (COP) ratings, that places it in the 5-star category.



**AOP POINTS 15.30**

- GOOD
- ADEQUATE
- MARGINAL
- WEAK
- POOR



**MODIFIER No modifier**

SAFETY ITEMS		TESTED VARIANT	OTHER ASEAN VARIANT
<b>AIRBAGS</b>	DAB : PAB	S : S	S : S
<b>SBR</b>	Driver : Front Passenger	S : S	S : S
<b>SEATBELT</b>	Retractor Pre-tensioner & Load Limiter for Driver	S	S
	Retractor Pre-tensioner & Load Limiter for Front Passenger	S	S
<b>3-POINT</b>	All Forward Facing Seats	S	S
<b>ABS</b>	Anti-lock Braking System	S	S
<b>ESC</b>	Stability Control	S	S

**Key:**

- S : Standard on all variants
- O : Optional on base; Standard on higher variants
- V : Not available on base; Standard/Optional on higher variants
- X : Not available
- # ESC & SBR required for 5-Star rating from 2012

**TOYOTA PRIUS WITH 7 AIRBAGS**
  
  
 ADULT OCCUPANT PROTECTION ★★★★★
   
 CHILD OCCUPANT PROTECTION 86%
   
**CRASH TEST JUNE 2013**

# TOYOTA PRIUS

ASEAN NCAP PHASE II



COP Compliance **86 %**



CRS TYPE	<b>P3</b>	<b>P1.5</b>
ATTACHMENT	ISOFIX + Top Tether	ISOFIX
BRAND	Britax Duo Plus	Britax Baby Safe Plus SHR II Britax Baby Safe ISOFIX Base

## CHILD OCCUPANT PROTECTION

Dynamic Test (max. 24)	CRS Based Assessment (max. 12)	Vehicle Based Assessment (max. 13)	TOTAL (max. 49)	Compliance (%)
22.2	12	8	42.2	86

