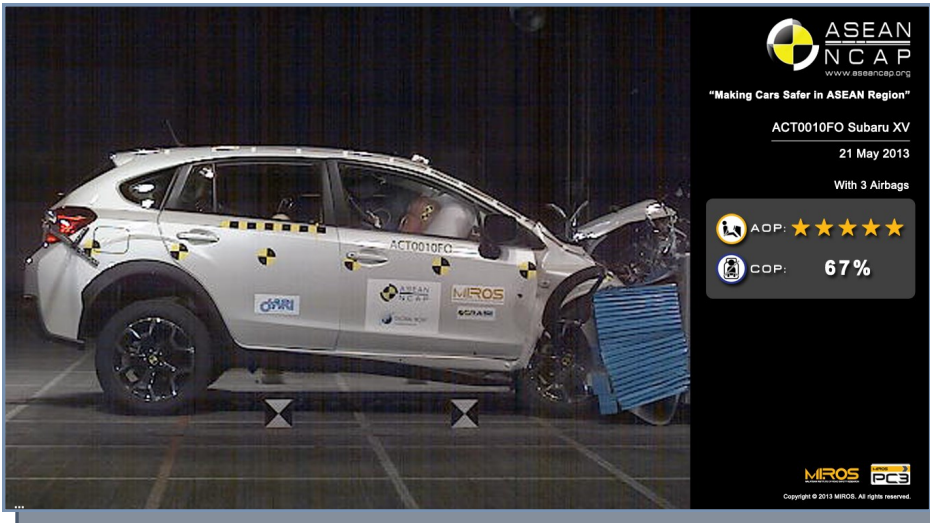


# SUBARU XV

## ASEAN NCAP PHASE II



**VARIANT 1.6 i**

**YEAR BUILT 2013**

**MODEL YEAR 2013**

**VEHICLE CATEGORY SUV**

**ENGINE CAPACITY 1.6 L PETROL**

**KERB MASS 1395**

**TEST LAB** 

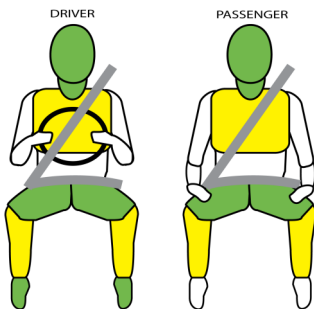
TESTED VARIANT ORIGIN	JAPAN	FOR	BRUNEI, SINGAPORE, PHILIPPINES
OTHER ASEAN PRODUCTION	MALAYSIA	FOR	MALAYSIA, INDONESIA, THAILAND

Subaru XV for ASEAN market is either produced in Japan as ASEAN CBU for Brunei, Singapore and Philippines market, or the Malaysian production for Malaysia, Thailand and Indonesia market. The variant tested was the high grade ASEAN CBU (Brunei & Singapore) that has similar specifications as the one produced in Malaysia – with all the concerned items in ASEAN NCAP rating matched – the availability of ESC, SBR and seat belt type (retractor pre-tensioner with load limiter for both driver and front passenger). This SUV scored 14.31 in the Adult Occupant Protection (AOP) and 67% in the Child Occupant Protection (COP) ratings, which places it in the 5-star category. Subaru XV for the Philippines market is available in Low or High grade, in which the later will be equipped with knee airbag and SBR for both front occupants starting October 2013; thus, making it also eligible for ASEAN NCAP 5-star rating.



ADULT OCCUPANT PROTECTION

**AOP POINTS 14.31**



**MODIFIER No modifier**

SAFETY ITEMS		TESTED VARIANT	OTHER ASEAN VARIANT
<b>AIRBAGS</b>	DAB : PAB (Knee airbag available on the	<b>S : S</b>	<b>S : S</b>
<b>SBR</b>	Driver : Front Passenger	<b>S : S</b>	<b>S : S</b>
<b>SEATBELT</b>	Retractor Pre-tensioner & Load Limiter for Driver	<b>S</b>	<b>S</b>
	Retractor Pre-tensioner & Load Limiter for Front Passenger	<b>S</b>	<b>S</b>
<b>3-POINT BELT</b>	All Forward Facing Seats	<b>S</b>	<b>S</b>
<b>ABS</b>	Anti-lock Braking System	<b>S</b>	<b>S</b>
<b>ESC</b>	Stability Control	<b>S</b>	<b>S</b>

**Key:**

S : Standard on all variants

O : Optional on base; Standard on higher variants

V : Not available on base; Standard/Optional on higher variants

X : Not available

# ESC & SBR required for 5-Star rating from 2012

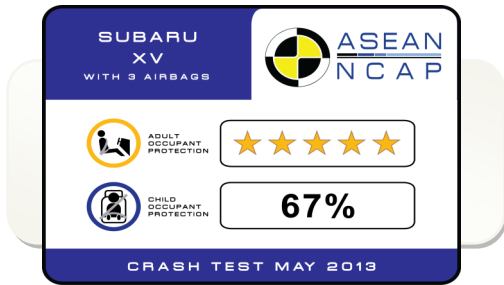


# SUBARU XV

ASEAN NCAP PHASE II



COP Compliance **67%**



CRS TYPE	<b>P3</b>	<b>P1.5</b>
ATTACHMENT	ISOFIX + Top Tether	ISOFIX
BRAND	Britax Duo Plus	Britax Baby Safe Plus SHR II Britax Baby Safe ISOFIX Base

## CHILD OCCUPANT PROTECTION

Dynamic Test (max. 24)	CRS Based Assessment (max. 12)	Vehicle Based Assessment (max. 13)	TOTAL (max. 49)	Compliance (%)
13.95	12	7	32.95	67

