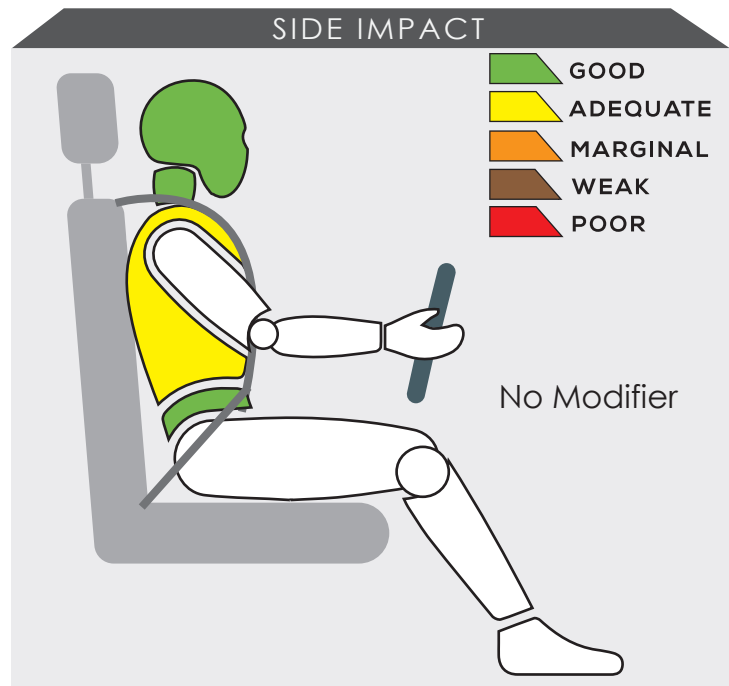
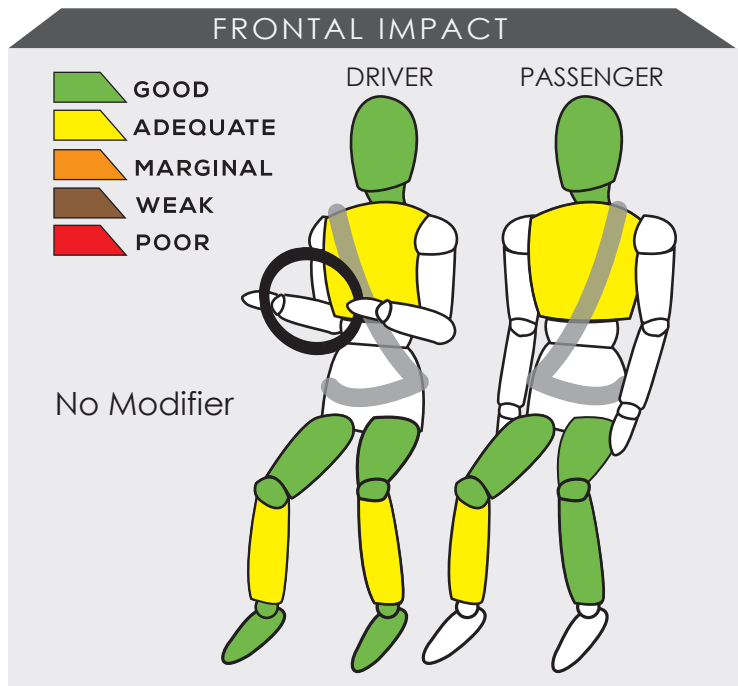


MITSUBISHI XFORCE



Variant EXCEED	Year Built 2024
Model Year 2024	Vehicle Category SUV
Engine Capacity 1.5 L	Kerb Mass 1240 kg
No. of Airbags 4	Test Lab JARI

TESTED VARIANT ORIGIN	INDONESIA	FOR	INDONESIA, PHILIPPINES, VIETNAM
OTHER ASEAN PRODUCTION (ALL VARIANTS)	INDONESIA	FOR	BRUNEI, INDONESIA, CAMBODIA, PHILIPPINES, VIETNAM, LAOS
	THAILAND		THAILAND
	MALAYSIA		MALAYSIA




The frontal offset test showed the SUV's frontal occupant compartment remained stable with test data demonstrated adequate protection was provided to both dummy occupant's chests and lower legs.

Dummy readings showed there was adequate protection given to the driver's chest during the side impact test.

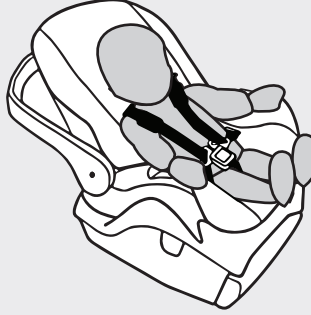

SAFETY ITEMS (PASSIVE)

ITEMS		REGION	ASEAN
Airbags	Driver		Standard on all variants
	Passenger		Standard on all variants
	Side (2)		Standard on all variants
	Curtain (2)		Available as standard or optional
	Knee		Not available
Seatbelts	Retractor Pre-tensioner & Load Limiter for Driver		Standard on all variants
	Retractor Pre-tensioner & Load Limiter for Passenger		Standard on all variants

CHILD OCCUPANT PROTECTION	DYNAMIC TEST	VEHICLE BASED	INSTALLATION	CHILD DETECTION	TOTAL
	24.00	9.00	10.43	0.00	43.43

DYNAMIC TEST ASSESSMENT



18-MONTH-OLD CHILD		3-YEAR-OLD CHILD	
Restraint	: Joie Spin 360	Restraint	: Joie Spin 360
Facing	: Rearward Facing	Facing	: Rearward Facing
Installation	: ISOFIX & Support leg	Installation	: ISOFIX & Support leg
			
Frontal Impact	: 8.00	Frontal Impact	: 8.00
Side Impact	: 4.00	Side Impact	: 4.00
Total Performance	: 12.00	Total Performance	: 12.00

CRS INSTALLATION ASSESSMENT

CRS	DIRECTION	SEAT POSITION						
		FRONT	2ND ROW			3RD ROW		
		PASSENGER	LEFT	CENTRE	RIGHT	LEFT	CENTRE	RIGHT
Peg-Perego Primo Viaggio SL	Rwd	EXEMPT	PASS	PASS	PASS	N/A	N/A	N/A
Joie Stages	Rwd	EXEMPT	PASS	FAIL	PASS	N/A	N/A	N/A
Joie Stages	Fwd	PASS	PASS	FAIL	PASS	N/A	N/A	N/A
Combi Buon Junior Air	Fwd	PASS	PASS	FAIL	PASS	N/A	N/A	N/A
Maxi Cosi Cabriofix + Family Fix	Rwd	EXEMPT	PASS	EXEMPT	PASS	N/A	N/A	N/A
Joie Every Stage Fx	Fwd	EXEMPT	PASS	EXEMPT	PASS	N/A	N/A	N/A
Joie Every Stage Fx	Rwd	EXEMPT	PASS	FAIL	PASS	N/A	N/A	N/A
Maxi Cosi Titan Pro	Fwd	EXEMPT	PASS	EXEMPT	PASS	N/A	N/A	N/A
Britax KidFix 2 R	Fwd	PASS	PASS	FAIL	PASS	N/A	N/A	N/A
Joie Spin 360*	Rwd	EXEMPT	PASS	EXEMPT	PASS	N/A	N/A	N/A
Joie Spin 360*	Rwd	EXEMPT	PASS	EXEMPT	PASS	N/A	N/A	N/A

PASS : Install without problem, FAIL : Safety critical problem, EXEMPT : Installation not allowed, N/A : Not available
*Manufacturer's selection



ITEMS	ASEAN
--------------	--------------

Effective Braking & Avoidance
--

Anti-lock Braking System	Standard on all variants
Electronic Stability Control	Standard on all variants

Seatbelt Reminders

Driver	Standard on all variants
Front Passenger	Standard on all variants
Rear Passengers	Standard on all variants
Rear Seat Occupant Detection	Not available

Autonomous Emergency Braking

City	Available as standard or optional
Inter-Urban	Available as standard or optional
Pedestrian	Not available

Advanced Safety Assist Technologies
--

Lane Departure Warning System	Not available
Forward Collision Warning System	Available as standard or optional
Lane Keep Assist	Not available

AUTONOMOUS EMERGENCY BRAKING ASSESSMENT
--

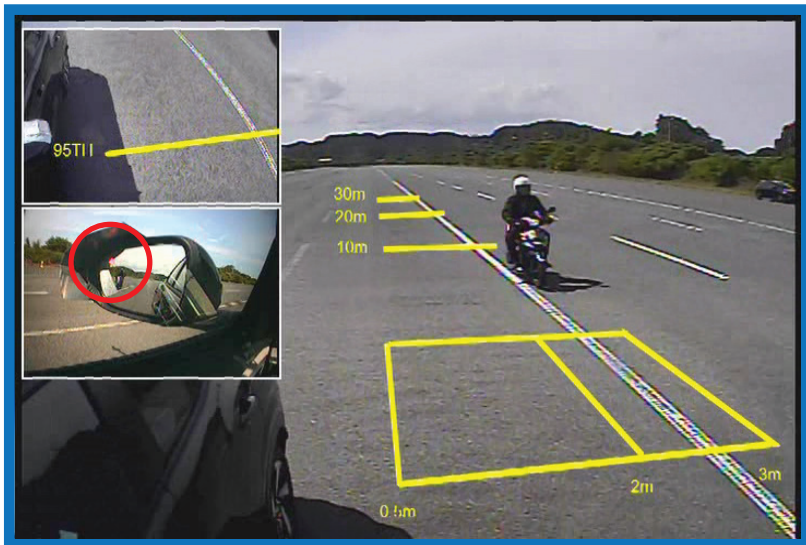


ASEAN NCAP is introducing the Autonomous Emergency Braking (AEB) system functionality assessment in its new 2021-2025 protocol. In the protocol, ASEAN NCAP assessed the functionality and effectiveness of AEB City (car-to-car rear stationary) and AEB Inter-Urban (car-to-car rear moving) systems fitted inside the vehicle in performing emergency braking at several speeds against another preceding vehicle. The new Mitsubishi XFORCE offers both the AEB City and Inter-Urban systems either as standard or optional across all variants. In this assessment, ASEAN NCAP confirms the technologies have functioned according to the ASEAN NCAP requirements.

MOTORCYCLIST SAFETY 	BLIND SPOT DETECTION	REAR VISUALIZATION	HEADLIGHT	PEDESTRIAN	ADVANCED MST	TOTAL
	6.59	0.00	1.29	2.00	0.00	9.88

ITEMS	ASEAN
Blind Spot Detection	
Nearside	Available as standard or optional
Offside	Available as standard or optional
Rear Visualization	
Advanced Rear Visualization	Not available
Headlight	
Auto High Beam	Available as standard or optional
Pedestrian	
Pedestrian Protection	Standard on all variants
Advanced Motorcyclist Safety Technology	
Nil	-

BLIND SPOT DETECTION ASSESSMENT



Starting from the 2017-2020 protocol, ASEAN NCAP introduced an assessment on the functionality of Blind Spot Technology fitted inside the assessed vehicle. ASEAN NCAP continues the assessment under the new Motorcyclist Safety pillar for the new 2021-2025 protocol. The new Mitsubishi XFORCE is equipped with Blind Spot Detection (BSD) on both sides of the vehicle either as standard or optional fitment across all its variants. In this assessment, ASEAN NCAP confirms the technology has functioned according to the ASEAN NCAP requirements on both sides of the vehicle.




PETROL



HEV

OVERALL RATING

The newly assessed Mitsubishi XFORCE is the second model under the Mitsubishi brand that underwent ASEAN NCAP assessment under the 2021-2025 protocol. The new XFORCE offers 4 airbags as standard together with Anti-lock Braking System (ABS), Electronic Stability Control (ESC), Seatbelt Reminder System (SBR) for frontal and rear seats occupants and Pedestrian Protection (PP) technology across all its variants. In addition, the model has several key safety technologies that are equipped either as standard or optional comprising the Autonomous Emergency Braking (AEB) City, AEB Inter-Urban, Forward Collision Warning (FCW), Blind Spot Detection (BSD) and Auto High Beam (AHB). The Mitsubishi XFORCE made a superb performance in the current 2021-2025 assessment by achieving 5-Star rating in all the assessment categories.

	AOP			COP			SAFETY ASSIST			MS			2021 - 2025 ASEAN NCAP RATING 5
	Item	Point	Max	Item	Point	Max	Item	Point	Max	Item	Point	Max	
	ODB	14.61	16.00	FRONTAL	16.00	16.00	EBA	6.00	6.00	BSD/BSV	6.59	8.00	5
	SIDE	7.85	8.00	SIDE	8.00	8.00	SBR	4.50	6.00	ARV	-	4.00	
	HPT Evaluation	5.65	8.00	Installation	10.43	12.00	AEB City	1.62	2.50	AHB	1.29	2.00	
				Vehicle Based CPD	9.00	13.00	AEB Inter-Urban	2.26	3.50	Ped. Protection	2.00	2.00	
					-	2.00	Advanced SATs	1.00	3.00	Advanced MST*	-	2.00	
Score		28.10	32.00		43.43	51.00		15.38	21.00		9.88	16.00	
Normalized Score		0.88			0.85			0.73			0.61765		
Weighting		40%			20%			20%			20%		
Weighted Score		35.13			17.03			14.65			12.35		
Maximum Star Rating		5			5			5			5		

*Bonus Point