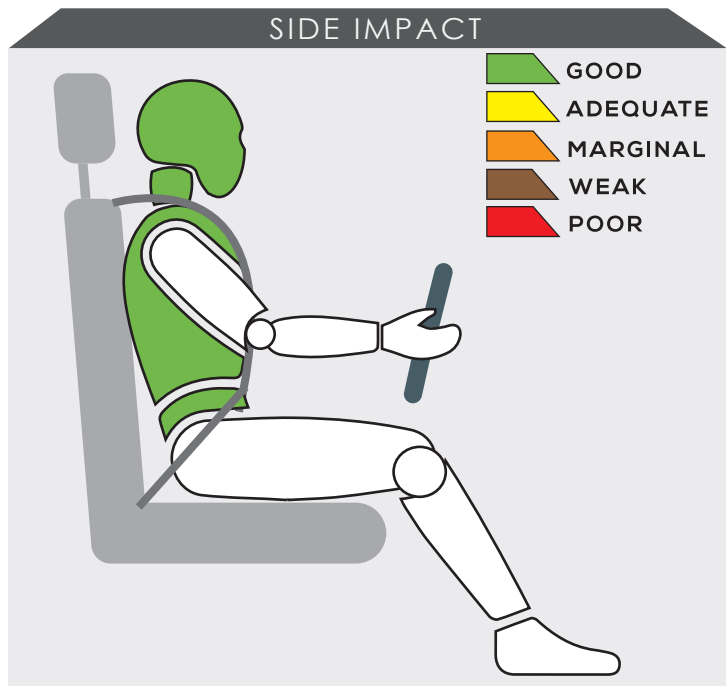
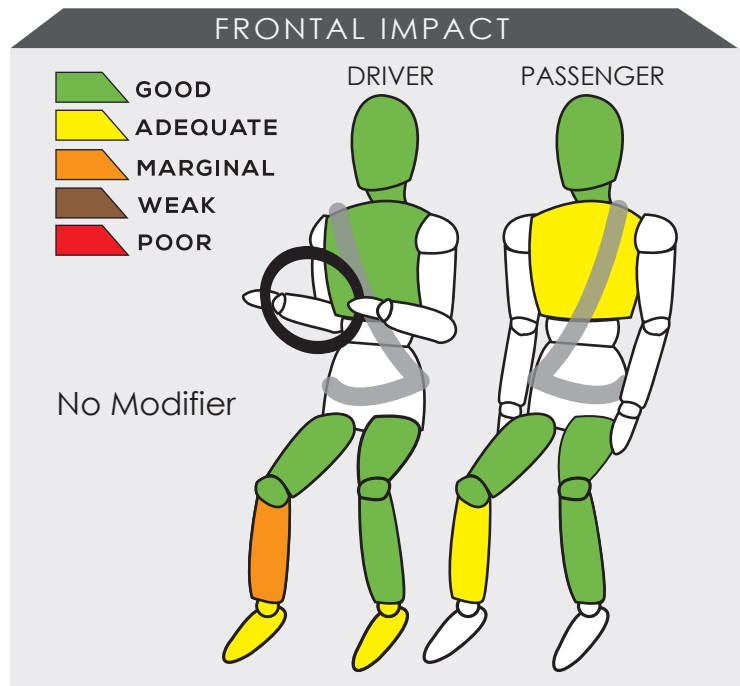


# MITSUBISHI TRITON (2023)



Variant <b>DOUBLE CAB</b>	Year Built <b>2023</b>
Model Year <b>2024</b>	Vehicle Category <b>PICKUP</b>
Engine Capacity <b>2.4 L</b>	Kerb Mass <b>2000 kg</b>
No. of Airbags <b>3</b>	Test Lab <b>JARI</b>

TESTED VARIANT ORIGIN	<b>THAILAND</b>	FOR	PHILIPPINES, THAILAND, INDONESIA, MALAYSIA, VIETNAM
OTHER ASEAN PRODUCTION (ALL VARIANTS)	<b>THAILAND</b>	FOR	BRUNEI, CAMBODIA, LAOS, PHILIPPINES, THAILAND, INDONESIA, MALAYSIA, VIETNAM




The pickup's front compartment remained stable in the frontal offset test. Data acquired from the test dummy showed the driver's right lower leg received marginal protection while the passenger had adequate protection on the chest and right lower leg.

The performance of HPT was confirmed with additional deployment test and its score was determined by Fitment Rating System (FRS).

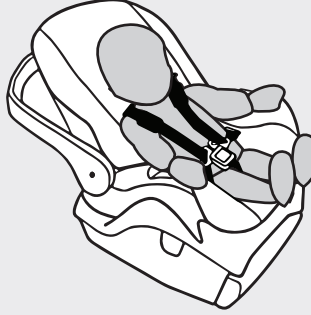

# SAFETY ITEMS (PASSIVE)

ITEMS		REGION	ASEAN
Airbags	Driver		Standard on all variants
	Passenger		Standard on all variants
	Side (2)		Available as standard or optional
	Curtain (2)		Available as standard or optional
	Knee		Standard on all variants
Seatbelts	Retractor Pre-tensioner & Load Limiter for Driver		Standard on all variants
	Retractor Pre-tensioner & Load Limiter for Passenger		Standard on all variants

CHILD OCCUPANT PROTECTION	DYNAMIC TEST	VEHICLE BASED	INSTALLATION	CHILD DETECTION	TOTAL
	24.00	9.00	11.72	0.00	44.72

## DYNAMIC TEST ASSESSMENT



18-MONTH-OLD CHILD		3-YEAR-OLD CHILD	
<b>Restraint</b>	: Joie Spin 360	<b>Restraint</b>	: Joie Spin 360
<b>Facing</b>	: Rearward Facing	<b>Facing</b>	: Rearward Facing
<b>Installation</b>	: ISOFIX & Supportleg	<b>Installation</b>	: ISOFIX & Supportleg
			
<b>Frontal Impact</b>	: 8.00	<b>Frontal Impact</b>	: 8.00
<b>Side Impact</b>	: 4.00	<b>Side Impact</b>	: 4.00
<b>Total Performance</b>	: 12.00	<b>Total Performance</b>	: 12.00

## CRS INSTALLATION ASSESSMENT

CRS	DIRECTION	SEAT POSITION						
		FRONT	2ND ROW			3RD ROW		
		PASSENGER	LEFT	CENTRE	RIGHT	LEFT	CENTRE	RIGHT
Peg-Perego Primo Viaggio SL	Rwd	EXEMPT	PASS	PASS	PASS	N/A	N/A	N/A
Joie Stages	Rwd	EXEMPT	PASS	PASS	PASS	N/A	N/A	N/A
Joie Stages	Fwd	PASS	PASS	PASS	PASS	N/A	N/A	N/A
Combi Buon Junior Air	Fwd	PASS	PASS	PASS	PASS	N/A	N/A	N/A
Maxi Cosi Cabriofix + Family Fix	Rwd	EXEMPT	PASS	EXEMPT	PASS	N/A	N/A	N/A
Joie Every Stage Fx	Fwd	EXEMPT	PASS	EXEMPT	PASS	N/A	N/A	N/A
Joie Every Stage Fx	Rwd	EXEMPT	PASS	PASS	PASS	N/A	N/A	N/A
Maxi Cosi Titan Pro	Fwd	EXEMPT	PASS	EXEMPT	PASS	N/A	N/A	N/A
Britax KidFix 2 R	Fwd	PASS	PASS	FAIL	PASS	N/A	N/A	N/A
Joie Spin 360*	Rwd	EXEMPT	PASS	EXEMPT	PASS	N/A	N/A	N/A
Joie Spin 360*	Rwd	EXEMPT	PASS	EXEMPT	PASS	N/A	N/A	N/A

PASS : Install without problem, FAIL : Safety critical problem, EXEMPT : Installation not allowed, N/A : Not available  
 \*Manufacturer's selection



<b>ITEMS</b>	<b>ASEAN</b>
--------------	--------------

<b>Effective Braking &amp; Avoidance</b>
--

Anti-lock Braking System	Standard on all variants
Electronic Stability Control	Standard on all variants

<b>Seatbelt Reminders</b>
---------------------------

Driver	Standard on all variants
Front Passenger	Standard on all variants
Rear Passengers	Available as standard or optional
Rear Seat Occupant Detection	Not available

<b>Autonomous Emergency Braking</b>
-------------------------------------

City	Available as standard or optional
Inter-Urban	Available as standard or optional
Pedestrian	Available as standard or optional

<b>Advanced Safety Assist Technologies</b>
--

Lane Departure Warning System	Available as standard or optional
Forward Collision Warning System	Available as standard or optional
Lane Keep Assist	Not available

<b>AUTONOMOUS EMERGENCY BRAKING ASSESSMENT</b>
--

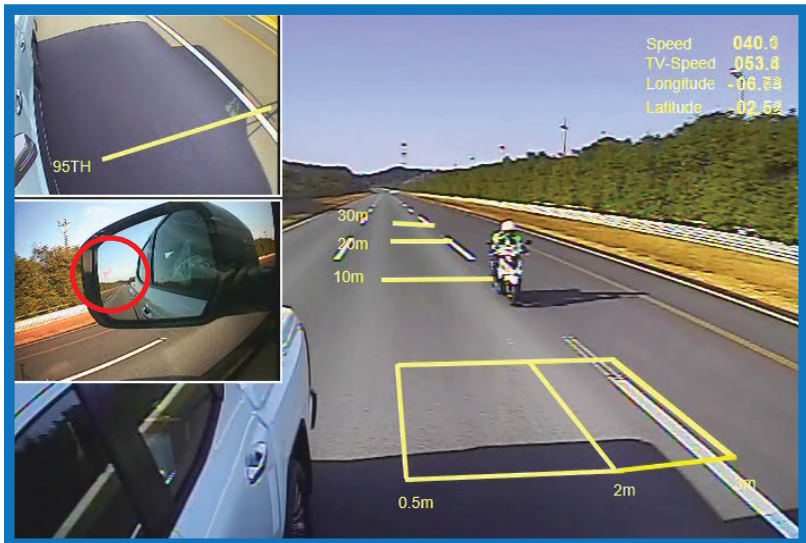


ASEAN NCAP is introducing the Autonomous Emergency Braking (AEB) system functionality assessment in its new 2021-2025 protocol. In the protocol, ASEAN NCAP assessed the functionality and effectiveness of AEB City (C2C rear stationary) and AEB Inter-Urban (C2C rear moving) systems fitted inside the vehicle in performing emergency braking at several speeds against another preceding vehicle. Both the AEB City and Inter-Urban systems are available as either standard or optional equipment across all Triton's variants. In this assessment, ASEAN NCAP confirms the technologies have functioned according to the ASEAN NCAP requirements.

<b>MOTORCYCLIST SAFETY</b> 	BLIND SPOT DETECTION	REAR VISUALIZATION	HEADLIGHT	PEDESTRIAN	ADVANCED MST	TOTAL
	4.94	0.00	1.24	2.00	0.00	8.18

ITEMS	ASEAN
<b>Blind Spot Detection</b>	
Nearside	Available as standard or optional
Offside	Available as standard or optional
<b>Rear Visualization</b>	
Advanced Rear Visualization	Not available
<b>Headlight</b>	
Auto High Beam	Available as standard or optional
<b>Pedestrian</b>	
Pedestrian Protection	Standard on all variants
<b>Advanced Motorcyclist Safety Technology</b>	
Nil	-

## BLIND SPOT DETECTION ASSESSMENT





Starting from the 2017-2020 protocol, ASEAN NCAP introduced an assessment on the functionality of Blind Spot Technology fitted inside the assessed vehicle. ASEAN NCAP continues the assessment under the new Motorcyclist Safety pillar for the 2021-2025 protocol. The new Mitsubishi Triton is equipped with Blind Spot Detection (BSD) on both sides of the vehicle either as standard or optional fitment across all its variants. In this assessment, ASEAN NCAP confirms the technology has functioned according to the ASEAN NCAP requirements on the both sides of the vehicle.



## OVERALL RATING

Mitsubishi Triton first underwent ASEAN NCAP assessment in 2015 under its older protocol for 2012-2016, which focused on two assessment categories; Adult Occupant Protection (AOP) and Child Occupant Protection (COP). In 2023, the new Mitsubishi Triton underwent a more stringent ASEAN NCAP assessment covering four assessment categories; AOP, COP, Safety Assist and Motorcyclist Safety. The pickup is equipped with three airbags as standard in all its variants and offers seven airbags in its higher variants. The model has a standard fitment of Anti-lock Braking System (ABS), Electronic Stability Control (ESC) Seatbelt Reminder System (SBR) for both frontal occupants and Pedestrian Protection technology across all variants. The pickup has a number of active safety technologies available either as standard or optional equipment namely Autonomous Emergency Braking (AEB) City, AEB Inter-Urban, AEB Pedestrian, Blind Spot Detection (BSD) for both sides of the vehicle, Lane Departure Warning (LDW), Forward Collision Warning (FCW), Auto High Beam (AHB) and SBR for rear seats occupants. The new Mitsubishi Triton made an impressive performance in the assessment under the 2021-2025 protocol by achieving 5-Star rating in all the assessment categories.

	AOP			COP			SAFETY ASSIST			MS			2021 - 2025 ASEAN NCAP RATING
	Item	Point	Max	Item	Point	Max	Item	Point	Max	Item	Point	Max	
	ODB	13.07	16.00	FRONTAL	16.00	16.00	EBA	6.00	6.00	BSD/BSV	4.94	8.00	
	SIDE	8.00	8.00	SIDE	8.00	8.00	SBR	3.93	6.00	ARV	-	4.00	
	HPT Evaluation	4.94	8.00	Installation	11.72	12.00	AEB City	1.54	2.50	AHB	1.24	2.00	
				Vehicle Based	9.00	13.00	AEB Inter-Urban	2.16	3.50	Ped. Protection	2.00	2.00	
				CPD	-	2.00	Advanced SATs	1.53	3.00	Advanced MST*	-	2.00	
<b>Score</b>		26.01	32.00		44.72	51.00		15.16	21.00		8.18	16.00	<b>OVERALL SCORE</b> 74.71 5
<b>Normalized Score</b>		0.81			0.88			0.72			0.511029		
<b>Weighting</b>		40%			20%			20%			20%		
<b>Weighted Score</b>		32.52			17.54			14.44			10.22		
<b>Maximum Star Rating</b>		5			5			5			5		

\*Bonus Point