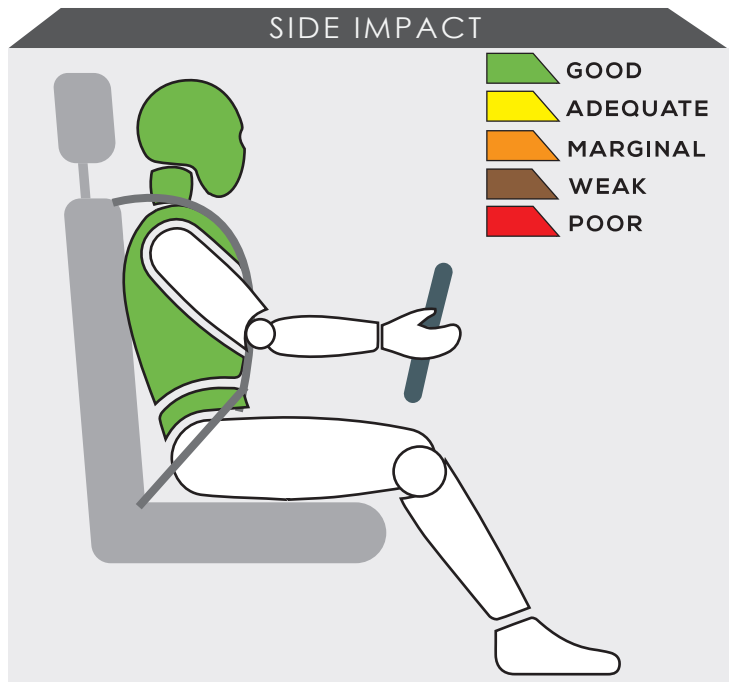
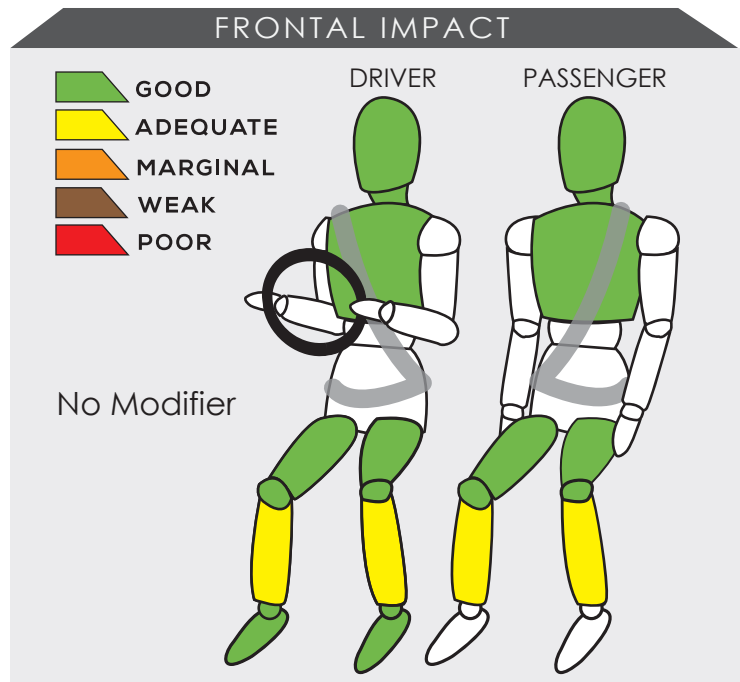


# HONDA CR-V (2023)



Variant <b>EL-AWD</b>	Year Built <b>2023</b>
Model Year <b>2023</b>	Vehicle Category <b>SUV</b>
Engine Capacity <b>1.5 Turbo</b>	Kerb Mass <b>1749 kg</b>
No. of Airbags <b>8</b>	Test Lab <b>JARI</b>

TESTED VARIANT ORIGIN	THAILAND	FOR	THAILAND
OTHER ASEAN PRODUCTION (ALL VARIANTS)	THAILAND	FOR	THAILAND, INDONESIA, BRUNEI, LAOS, PHILIPPINES, CAMBODIA, SINGAPORE
	VIETNAM		VIETNAM
	MALAYSIA		MALAYSIA




The vehicle's occupant compartment remained stable during- the frontal offset test. Data from the assessment showed there were adequate protection given to both the driver and passenger's lower legs.

The performance of HPT was confirmed with additional deployment test and its score was determined by Fitment Rating System (FRS).

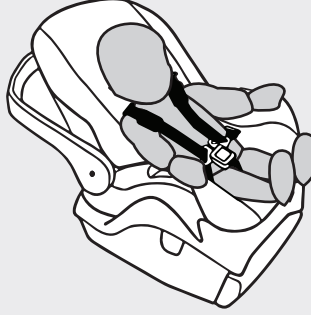

# SAFETY ITEMS (PASSIVE)

ITEMS		REGION	ASEAN
Airbags	Driver		Standard on all variants
	Passenger		Standard on all variants
	Side (2)		Standard on all variants
	Curtain (2)		Standard on all variants
	Knee (2)		Standard on all variants
Seatbelts	Retractor Pre-tensioner & Load Limiter for Driver		Standard on all variants
	Retractor Pre-tensioner & Load Limiter for Passenger		Standard on all variants

CHILD OCCUPANT PROTECTION	DYNAMIC TEST	VEHICLE BASED	INSTALLATION	CHILD DETECTION	TOTAL
	24.00	9.00	11.81	1.00	45.81



### DYNAMIC TEST ASSESSMENT

18-MONTH-OLD CHILD		3-YEAR-OLD CHILD	
<b>Restraint</b>	: Honda Baby & Kids i-Size	<b>Restraint</b>	: Honda Baby & Kids i-Size
<b>Facing</b>	: Rearward Facing	<b>Facing</b>	: Rearward Facing
<b>Installation</b>	: ISOFIX & Supportleg	<b>Installation</b>	: ISOFIX & Supportleg
			
<b>Frontal Impact</b>	: 8.00	<b>Frontal Impact</b>	: 8.00
<b>Side Impact</b>	: 4.00	<b>Side Impact</b>	: 4.00
<b>Total Performance</b>	: 12.00	<b>Total Performance</b>	: 12.00

## CRS INSTALLATION ASSESSMENT

CRS	DIRECTION	SEAT POSITION						
		FRONT	2ND ROW			3RD ROW		
		PASSENGER	LEFT	CENTRE	RIGHT	LEFT	CENTRE	RIGHT
Peg-Perego Primo Viaggio SL	Rwd	EXEMPT	PASS	PASS	PASS	PASS	N/A	PASS
Joie Stages	Rwd	EXEMPT	PASS	PASS	PASS	PASS	N/A	PASS
Joie Stages	Fwd	PASS	PASS	PASS	FAIL	PASS	N/A	PASS
Combi Buon Junior Air	Fwd	PASS	PASS	PASS	PASS	PASS	N/A	PASS
Maxi Cosi Cabriofix + Family Fix	Rwd	EXEMPT	PASS	EXEMPT	PASS	EXEMPT	N/A	EXEMPT
Joie Every Stage Fx	Fwd	EXEMPT	PASS	EXEMPT	PASS	EXEMPT	N/A	EXEMPT
Joie Every Stage Fx	Rwd	EXEMPT	PASS	PASS	PASS	PASS	N/A	PASS
Maxi Cosi Titan Pro	Fwd	EXEMPT	PASS	EXEMPT	PASS	EXEMPT	N/A	EXEMPT
Britax KidFix 2 R	Fwd	PASS	PASS	PASS	PASS	PASS	N/A	PASS
Honda Baby & Kids i-Size*	Rwd	EXEMPT	PASS	EXEMPT	PASS	EXEMPT	N/A	EXEMPT
Honda Baby & Kids i-Size*	Rwd	EXEMPT	PASS	EXEMPT	PASS	EXEMPT	N/A	EXEMPT

PASS : Install without problem, FAIL : Safety critical problem, EXEMPT : Installation not allowed, N/A : Not available  
 \*Manufacturer's selection



<b>ITEMS</b>	<b>ASEAN</b>
--------------	--------------

<b>Effective Braking &amp; Avoidance</b>
--

Anti-lock Braking System	Standard on all variants
Electronic Stability Control	Standard on all variants

<b>Seatbelt Reminders</b>
---------------------------

Driver	Standard on all variants
Front Passenger	Standard on all variants
Rear Passengers	Standard on all variants
Rear Seat Occupant Detection	Not available

<b>Autonomous Emergency Braking</b>
-------------------------------------

City	Standard on all variants
Inter-Urban	Standard on all variants
Pedestrian	Standard on all variants

<b>Advanced Safety Assist Technologies</b>
--

Lane Departure Warning System	Available as standard or optional
Forward Collision Warning System	Available as standard or optional
Lane Keep Assist	Available as standard or optional
Driver Attention Monitor	Available as standard or optional

<b>AUTONOMOUS EMERGENCY BRAKING ASSESSMENT</b>
--

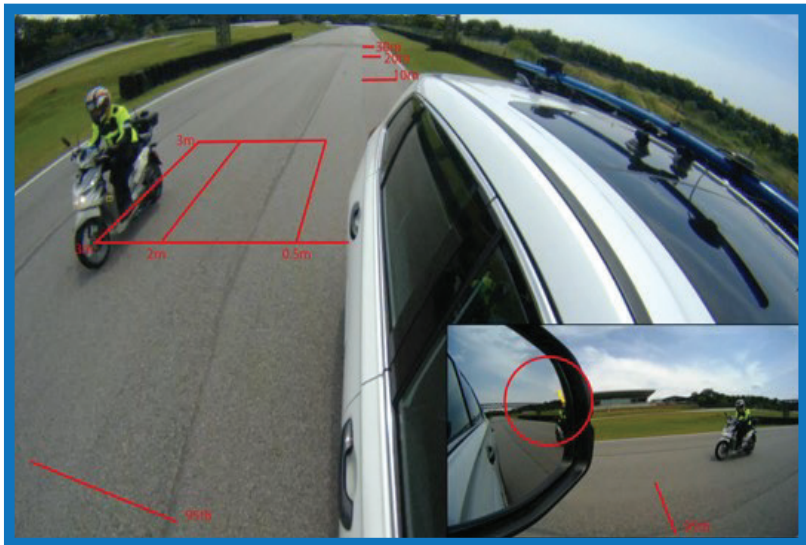


ASEAN NCAP is introducing the Autonomous Emergency Braking (AEB) system functionality assessment in its new 2021-2025 protocol. In the protocol, ASEAN NCAP assessed the functionality and effectiveness of AEB City (C2C rear stationary) and AEB Inter-Urban (C2C rear moving) systems fitted inside the vehicle in performing emergency braking at several speeds against another preceding vehicle. The new Honda CR-V offers both the AEB City and Inter-Urban systems as standard fitment across all its variants. In this assessment, ASEAN NCAP confirms the technologies have functioned according to the ASEAN NCAP requirements.



ITEMS	ASEAN
<b>Blind Spot Detection</b>	
Nearside	Available as standard or optional
Offside	Available as standard or optional
<b>Rear Visualization</b>	
Advanced Rear Visualization	Not available
<b>Headlight</b>	
Auto High Beam	Standard on all variants
<b>Pedestrian</b>	
Pedestrian Protection	Standard on all variants
<b>Advanced Motorcyclist Safety Technology</b>	
FCW for Motorcycle	Available as standard or optional
AEB for Motorcycle	Available as standard or optional

## BLIND SPOT DETECTION ASSESSMENT




Starting from the 2017-2020 protocol, ASEAN NCAP introduced assessment on the functionality of Blind Spot Technology fitted inside the assessed vehicle. ASEAN NCAP continues the assessment under the new Motorcyclist Safety pillar for the new 2021-2025 protocol. The newly assessed Honda CR-V is equipped with Blind Spot Detection (BSD) on both sides of the vehicle either as standard and optional fitment across all its variants. In this assessment, ASEAN NCAP confirms the technology has functioned according to the ASEAN NCAP requirements on both sides of the vehicle.



## OVERALL RATING

This is the third time the Honda CR-V underwent the ASEAN NCAP assessment. The SUV's first result was announced in 2014 in which ASEAN NCAP assessed its left-hand drive variant and it successfully achieved 5-Star rating for the Adult Occupant Protection (AOP) category and 4-Star for Child Occupant Protection (COP). Under the 2017-2020 protocol, the SUV continued to obtain an excellent result under its second assessment in 2017 with an achievement of 5-Star rating. The new Honda CR-V continues to improve its safety performance in the current 2021-2025 protocol. The SUV is equipped with a number of safety technologies as standard across all its variants comprising eight airbags, Electronic Stability Control (ESC), Anti-lock Braking System (ABS), Seatbelt Reminder System (SBR) for both frontal and rear seats occupants, Autonomous Emergency Braking (AEB) City, AEB Inter-Urban, AEB Pedestrian, Auto High Beam (AHB), Pedestrian Protection technology and Child Presence Detection (CPD). The 7-seater SUV also offers other advanced safety assist technologies namely Lane Departure Warning (LDW), Forward Collision Warning (FCW), Lane Keep Assist (LKA), Driver Attention Monitor (DAM), Blind Spot Detection (BSD) for the driver- and passenger-side, FCW for Motorcycle and AEB for Motorcycle, which are available either as standard or optional fitment. The Honda CR-V's consistently remarkable performance continues in the assessment with an achievement score of 90.45 points. The collective scoring from the four assessment categories has made the model to be eligible to be awarded with 5-Star ASEAN NCAP rating.

	AOP			COP			SAFETY ASSIST			MS			2021 - 2025 ASEAN NCAP RATING
	Item	Point	Max	Item	Point	Max	Item	Point	Max	Item	Point	Max	
	ODB	15.45	16.00	FRONTAL	16.00	16.00	EBA	6.00	6.00	BSD/BSV	5.68	8.00	<b>5</b>
	SIDE	8.00	8.00	SIDE	8.00	8.00	SBR	4.50	6.00	ARV	-	4.00	
	HPT Evaluation	8.00	8.00	Installation	11.81	12.00	AEB City	2.50	2.50	AHB	2.00	2.00	
				Vehicle Based	9.00	13.00	AEB Inter-Urban	3.50	3.50	Ped. Protection	2.00	2.00	
				CPD	1.00	2.00	Advanced SATs	3.00	3.00	Advanced MST*	2.00	2.00	
<b>Score</b>		31.45	32.00		45.81	51.00		19.50	21.00		11.68	16.00	
<b>Normalized Score</b>		0.98			0.90			0.93			0.7302632		
<b>Weighting</b>		40%			20%			20%			20%		<b>OVERALL SCORE</b>
<b>Weighted Score</b>		39.31			17.97			18.57			14.61		90.45
<b>Maximum Star Rating</b>		5			5			5			5		5

\*Bonus Point