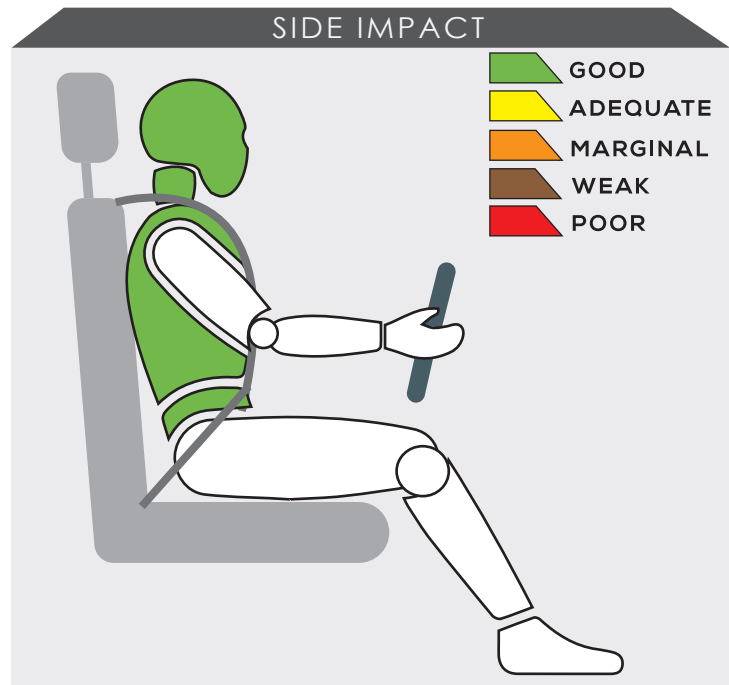
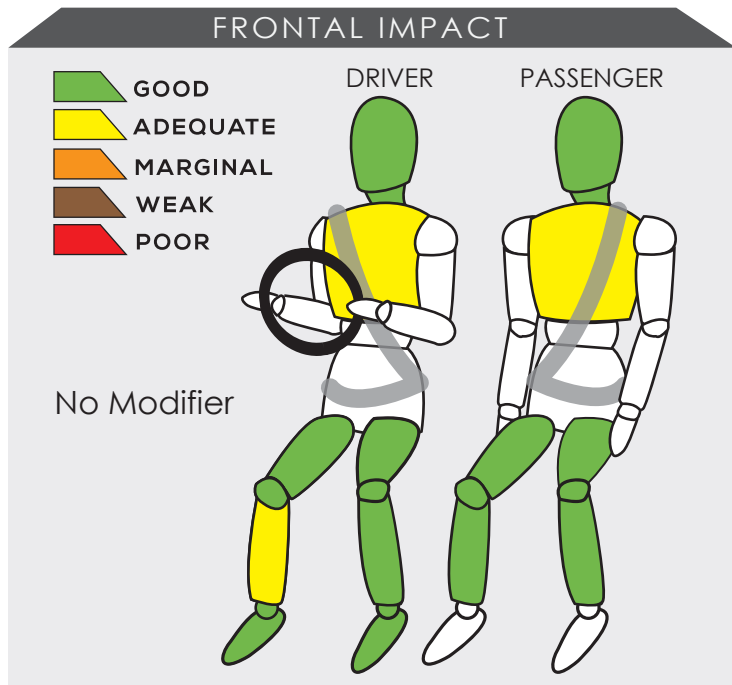


# HONDA WR-V



Variant <b>RS WITH HONDA SENSING</b>	Year Built <b>2022</b>
Model Year <b>2023</b>	Vehicle Category <b>SUV</b>
Engine Capacity <b>1.5 L</b>	Kerb Mass <b>1139 kg</b>
No. of Airbags <b>6</b>	Test Lab <b>JARI</b>

TESTED VARIANT ORIGIN	<b>INDONESIA</b>	FOR	<b>INDONESIA</b>
OTHER ASEAN PRODUCTION (ALL VARIANTS)	<b>INDONESIA</b>	FOR	<b>INDONESIA, THAILAND, BRUNEI, MALAYSIA</b>




Data obtained from the frontal offset test showed both test dummy occupants received adequate protection to the chests. The vehicle's frontal compartment remained stable in the test.

The performance of HPT was confirmed with additional deployment test and its score was determined by Fitment Rating System (FRS).

## SAFETY ITEMS (PASSIVE)

ITEMS		REGION	ASEAN
Airbags	Driver		Standard on all variants
	Passenger		Standard on all variants
	Side (2)		Standard on all variants
	Curtain (2)		Available as standard or optional
	Knee		Not available
Seatbelts	Retractor Pre-tensioner & Load Limiter for Driver		Standard on all variants
	Retractor Pre-tensioner & Load Limiter for Passenger		Standard on all variants

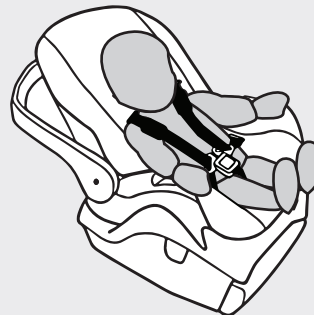
CHILD OCCUPANT PROTECTION	DYNAMIC TEST	VEHICLE BASED	INSTALLATION	CHILD DETECTION	TOTAL
	24.00	8.00	10.06	0.73	42.79

### DYNAMIC TEST ASSESSMENT



#### 18-MONTH-OLD CHILD

**Restraint** : Honda Baby & Kids i-Size  
**Facing** : Rearward Facing  
**Installation** : ISOFIX & Supportleg



Frontal Impact : 8.00  
 Side Impact : 4.00  
 Total Performance : 12.00

#### 3-YEAR-OLD CHILD

**Restraint** : Honda Baby & Kids i-Size  
**Facing** : Rearward Facing  
**Installation** : ISOFIX & Supportleg



Frontal Impact : 8.00  
 Side Impact : 4.00  
 Total Performance : 12.00

### CRS INSTALLATION ASSESSMENT

CRS	DIRECTION	SEAT POSITION						
		FRONT	2ND ROW			3RD ROW		
		PASSENGER	LEFT	CENTRE	RIGHT	LEFT	CENTRE	RIGHT
Peg-Perego Primo Viaggio SL	Rwd	EXEMPT	PASS	FAIL	PASS	N/A	N/A	N/A
Joie Stages	Rwd	EXEMPT	PASS	FAIL	PASS	N/A	N/A	N/A
Joie Stages	Fwd	PASS	PASS	FAIL	PASS	N/A	N/A	N/A
Combi Buon Junior Air	Fwd	PASS	PASS	FAIL	PASS	N/A	N/A	N/A
Maxi Cosi Cabriofix + Family Fix	Rwd	EXEMPT	PASS	EXEMPT	PASS	N/A	N/A	N/A
Joie Every Stage Fx	Fwd	EXEMPT	PASS	EXEMPT	PASS	N/A	N/A	N/A
Joie Every Stage Fx	Rwd	EXEMPT	PASS	FAIL	PASS	N/A	N/A	N/A
Maxi Cosi Titan Pro	Fwd	EXEMPT	PASS	EXEMPT	PASS	N/A	N/A	N/A
Britax KidFix 2 R	Fwd	PASS	PASS	FAIL	PASS	N/A	N/A	N/A
Honda Baby & Kids i-Size*	Rwd	EXEMPT	PASS	EXEMPT	PASS	N/A	N/A	N/A
Honda Baby & Kids i-Size*	Rwd	EXEMPT	PASS	EXEMPT	PASS	N/A	N/A	N/A

PASS : Install without problem, FAIL : Safety critical problem, EXEMPT : Installation not allowed, N/A : Not available  
 \*Manufacturer's selection



<b>ITEMS</b>	<b>ASEAN</b>
--------------	--------------

<b>Effective Braking &amp; Avoidance</b>
--

Anti-lock Braking System	Standard on all variants
Electronic Stability Control	Standard on all variants

<b>Seatbelt Reminders</b>
---------------------------

Driver	Standard on all variants
Front Passenger	Standard on all variants
Rear Passengers	Not available
Rear Seat Occupant Detection	Not available

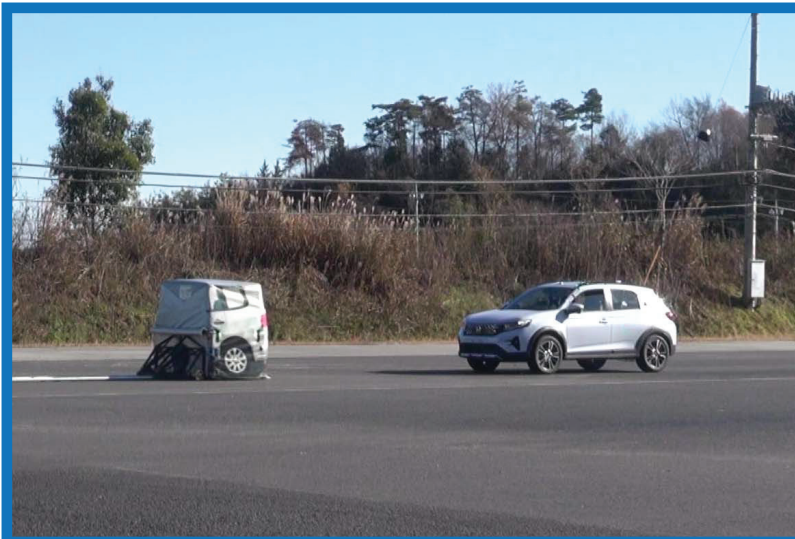
<b>Autonomous Emergency Braking</b>
-------------------------------------

City	Available as standard or optional
Inter-Urban	Available as standard or optional
Pedestrian	Available as standard or optional

<b>Advanced Safety Assist Technologies</b>
--

Lane Departure Warning System	Available as standard or optional
Forward Collision Warning System	Available as standard or optional
Lane Keep Assist	Available as standard or optional
Driver Attention Monitor	Not available

<b>AUTONOMOUS EMERGENCY BRAKING ASSESSMENT</b>
--

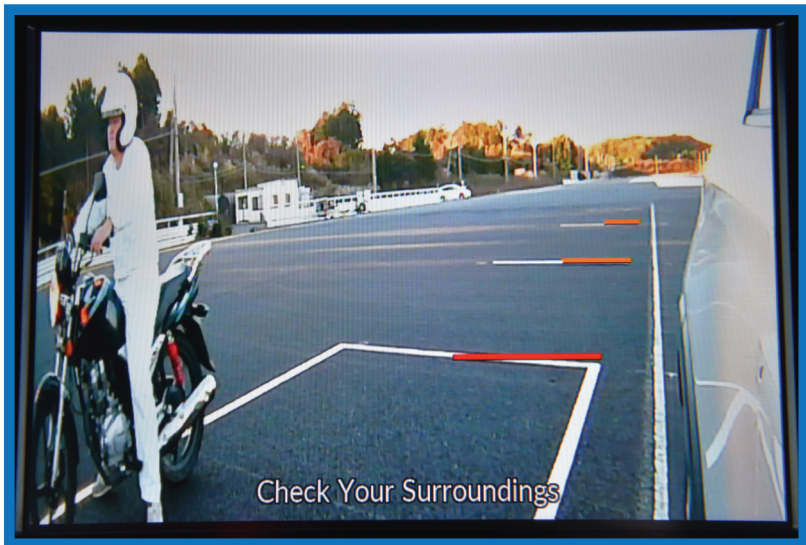


ASEAN NCAP is introducing the Autonomous Emergency Braking (AEB) system functionality assessment in its new 2021-2025 protocol. In the protocol, ASEAN NCAP assessed the functionality and effectiveness of AEB City and AEB Inter-Urban systems fitted inside the vehicle in performing emergency braking at several speeds against another preceding vehicle. The new Honda WR-V offers both the AEB City and Inter-Urban systems as standard or optional amongst its variants. In this assessment, ASEAN NCAP confirms the technologies have functioned according to the ASEAN NCAP requirements.



ITEMS	ASEAN
<b>Blind Spot Detection</b>	
Nearside	Not available
Offside	Available as standard or optional
<b>Rear Visualization</b>	
Advanced Rear Visualization	Not available
<b>Headlight</b>	
Auto High Beam	Available as standard or optional
<b>Pedestrian</b>	
Pedestrian Protection	Standard on all variants
<b>Advanced Motorcyclist Safety Technology</b>	
AEB for Motorcycle	Available as standard or optional

## BLIND SPOT DETECTION ASSESSMENT




Starting from the 2017-2020 protocol, ASEAN NCAP introduced assessment on the functionality of Blind Spot Technology fitted inside the assessed vehicle. ASEAN NCAP continues the assessment under the new Motorcyclist Safety pillar for the new 2021-2025 protocol. The newly assessed Honda WR-V is equipped with Blind Spot Visualization (BSV) on the passenger side of the vehicle as standard or optional fitment. In this assessment, ASEAN NCAP confirms the technology has functioned according to the ASEAN NCAP requirements on the left side area of the vehicle.



## OVERALL RATING

The new Honda WR-V is the ninth model under the Honda brand to be assessed by ASEAN NCAP. The 5-seater SUV offers standard equipment of 4 airbags, Electronic Stability Control (ESC), Anti-lock Braking System (ABS), Seatbelt Reminder System (SBR) for its frontal occupants and Pedestrian Protection technology. Nevertheless, majority of the WR-V's market also offer variants with 6 airbags. The WR-V offers safety assist technologies either as standard or optional fitment that include Autonomous Emergency Braking (AEB) City, AEB Inter-Urban, AEB Pedestrian, Lane Departure Warning (LDW), Forward Collision Warning (FCW) and Lane Keep Assist (LKA). Additionally, in the aspect of providing safety to motorcyclists/vulnerable road users, the model is equipped with Blind Spot Visualization (BSV) at the passenger side, Auto High Beam (AHB) and AEB for Motorcycle, which are also available either as standard or optional equipment. The Honda WR-V has made a commendable performance in the ASEAN NCAP assessment with a total score of 77.07 points. From the score the SUV has successfully obtained a maximum rating of 5 stars for all the assessed categories (AOP, COP, SA & MS). Hence, the overall score has made it eligible to be awarded with 5-Star ASEAN NCAP rating.

	AOP			COP			SAFETY ASSIST			MS			2021 - 2025 ASEAN NCAP RATING <span style="font-size: 48pt; font-weight: bold;">5</span>		
	Item	Point	Max	Item	Point	Max	Item	Point	Max	Item	Point	Max			
	ODB	14.68	16.00	FRONTAL	16.00	16.00	EBA	6.00	6.00	BSD/BSV	2.91	8.00	5		
	SIDE	8.00	8.00	SIDE	8.00	8.00	SBR	3.00	6.00	ARV	-	4.00			
	HPT Evaluation	4.73	8.00	Installation	10.06	12.00	AEB City	1.82	2.50	AHB	1.45	2.00			
				Vehicle Based	8.00	13.00	AEB Inter-Urban	2.55	3.50	Ped. Protection	2.00	2.00			
				CPD	0.73	2.00	Advanced SATs	3.00	3.00	Advanced MST*	2.00	2.00			
<b>Score</b>		27.41	32.00		42.79	51.00		16.37	21.00		8.36	16.00	OVERALL SCORE		
<b>Normalized Score</b>		0.86			0.84			0.78			0.52			77.07	
<b>Weighting</b>		40%			20%			20%			20%				5
<b>Weighted Score</b>		34.26			16.78			15.58			10.45				
<b>Maximum Star Rating</b>		5			5			5			5				

\*Bonus Point