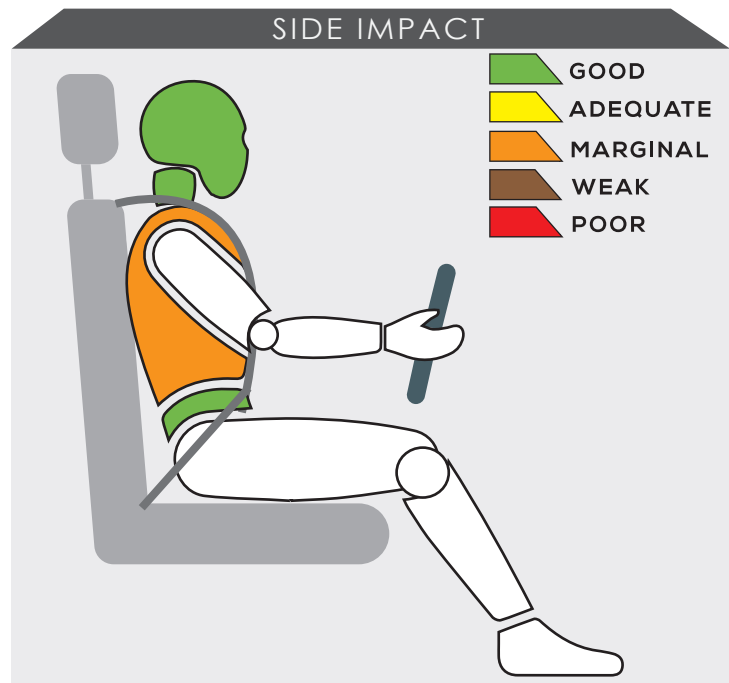
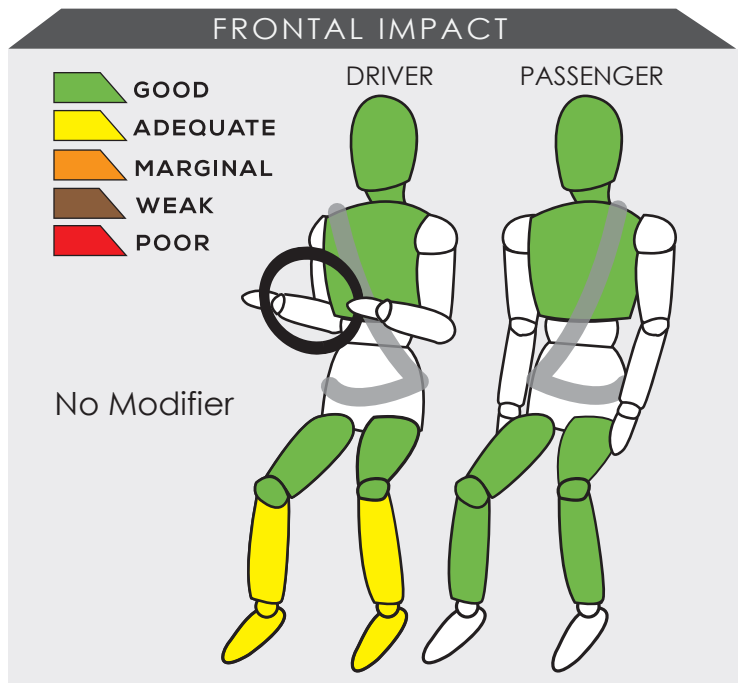


HYUNDAI CRETA



Variant ACTIVE	Year Built 2022
Model Year 2022	Vehicle Category SUV
Engine Capacity 1.5 L	Kerb Mass 1165 kg
No. of Airbags 2	Test Lab PC3

TESTED VARIANT ORIGIN	INDONESIA	FOR	INDONESIA
OTHER ASEAN PRODUCTION (ALL VARIANTS)	INDONESIA	FOR	INDONESIA, BRUNEI, MALAYSIA, PHILIPPINES, THAILAND, VIETNAM




Test data from the frontal offset test showed the SUV provided good protection to the occupants with the frontal compartment remained stable. Nevertheless, the driver's lower legs received adequate protection during the test.

Test data from the side impact test showed the driver received marginal protection to the chest.

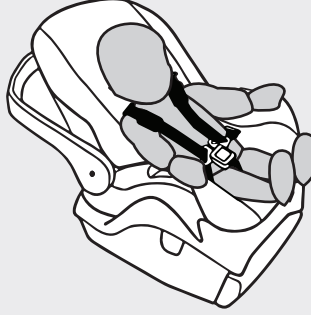

SAFETY ITEMS (PASSIVE)

ITEMS		REGION	ASEAN
Airbags	Driver		Standard on all variants
	Passenger		Standard on all variants
	Side (2)		Available as standard or optional
	Curtain (2)		Available as standard or optional
	Knee		Not available
Seatbelts	Retractor Pre-tensioner & Load Limiter for Driver		Standard on all variants
	Retractor Pre-tensioner & Load Limiter for Passenger		Standard on all variants

CHILD OCCUPANT PROTECTION	DYNAMIC TEST	VEHICLE BASED	INSTALLATION	CHILD DETECTION	TOTAL
	21.50	7.00	10.80	0.37	39.67



DYNAMIC TEST ASSESSMENT

18-MONTH-OLD CHILD		3-YEAR-OLD CHILD	
Restraint	: Joie Every Stage Fx	Restraint	: Joie Every Stage Fx
Facing	: Rearward Facing	Facing	: Rearward Facing
Installation	: ISOFIX & Supportleg	Installation	: ISOFIX & Supportleg
			
Frontal Impact	: 6.00	Frontal Impact	: 7.50
Side Impact	: 4.00	Side Impact	: 4.00
Total Performance	: 10.00	Total Performance	: 11.50

CRS INSTALLATION ASSESSMENT

CRS	DIRECTION	SEAT POSITION						
		FRONT	2ND ROW			3RD ROW		
		PASSENGER	LEFT	CENTRE	RIGHT	LEFT	CENTRE	RIGHT
Peg-Perego Primo Viaggio SL	Rwd	EXEMPT	PASS	PASS	PASS	N/A	N/A	N/A
Joie Stages	Rwd	EXEMPT	PASS	PASS	PASS	N/A	N/A	N/A
Joie Stages	Fwd	PASS	PASS	FAIL	PASS	N/A	N/A	N/A
Combi Buon Junior Air	Fwd	PASS	PASS	FAIL	PASS	N/A	N/A	N/A
Maxi Cosi Cabriofix + Family Fix	Rwd	EXEMPT	PASS	EXEMPT	PASS	N/A	N/A	N/A
Joie Every Stage Fx	Fwd	EXEMPT	PASS	EXEMPT	PASS	N/A	N/A	N/A
Joie Every Stage Fx	Rwd	EXEMPT	PASS	FAIL	PASS	N/A	N/A	N/A
Maxi Cosi Titan Pro	Fwd	EXEMPT	PASS	EXEMPT	PASS	N/A	N/A	N/A
Britax KidFix 2 R	Fwd	PASS	PASS	FAIL	PASS	N/A	N/A	N/A
Joie Every Stage Fx*	Rwd	EXEMPT	PASS	EXEMPT	PASS	N/A	N/A	N/A
Joie Every Stage Fx*	Rwd	EXEMPT	PASS	EXEMPT	PASS	N/A	N/A	N/A

PASS : Install without problem, FAIL : Safety critical problem, EXEMPT : Installation not allowed, N/A : Not available
 *Manufacturer's selection



ITEMS	ASEAN
--------------	--------------

Effective Braking & Avoidance
--

Anti-lock Braking System	Standard on all variants
Electronic Stability Control	Standard on all variants

Seatbelt Reminders

Driver	Standard on all variants
Front Passenger	Standard on all variants
Rear Passengers	Not available
Rear Seat Occupant Detection	Not available

Autonomous Emergency Braking

City	Available as standard or optional
Inter-Urban	Available as standard or optional
Pedestrian	Available as standard or optional

Advanced Safety Assist Technologies
--

Lane Departure Warning System	Available as standard or optional
Forward Collision Warning System	Available as standard or optional
Lane Keep Assist	Available as standard or optional

AUTONOMOUS EMERGENCY BRAKING ASSESSMENT
--



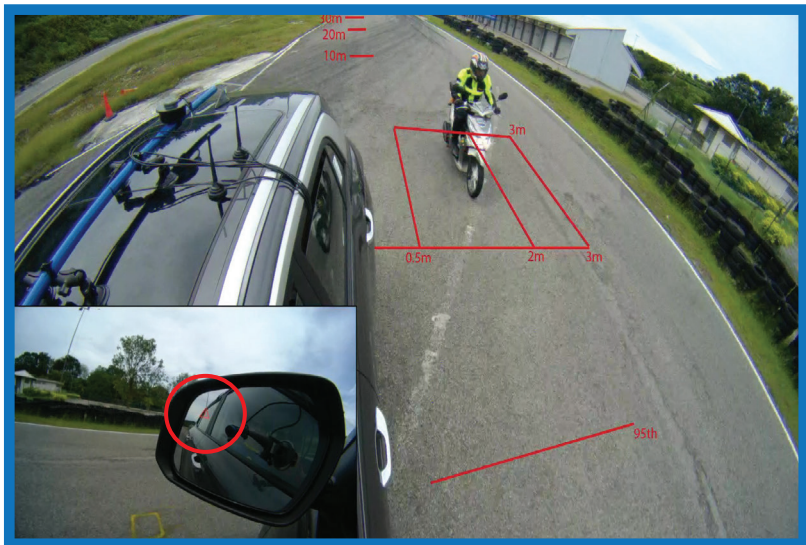
ASEAN NCAP is introducing the Autonomous Emergency Braking (AEB) system functionality assessment in its new 2021-2025 protocol. In the protocol, ASEAN NCAP assessed the functionality and effectiveness of AEB City and AEB Inter-Urban systems fitted inside the vehicle in performing emergency braking at several speeds against another preceding vehicle. Both the AEB City and Inter-Urban systems are available as either standard or optional across all its variants. In this assessment, ASEAN NCAP confirms that the technologies have functioned according to the ASEAN NCAP requirements.



ITEMS **ASEAN**

Blind Spot Detection	
Nearside	Available as standard or optional
Offside	Available as standard or optional
Rear Visualization	
Advanced Rear Visualization	Not available
Headlight	
Auto High Beam	Available as standard or optional
Pedestrian	
Pedestrian Protection	Standard on all variants
Advanced Motorcyclist Safety Technology	
Rear Cross-Traffic Collision-Avoidance Assist for Motorcycle	Available as standard or optional

BLIND SPOT DETECTION ASSESSMENT





Starting from the 2017-2020 protocol, ASEAN NCAP had introduced assessment on the functionality of Blind Spot Technology fitted inside the assessed vehicle. ASEAN NCAP continues the assessment under the new Motorcyclist Safety pillar for the new 2021-2025 protocol. The assessed Hyundai Creta offers Blind Spot Detection (BSD) on the driver and passenger sides of the vehicle either as standard or optional fitment. In this assessment, ASEAN NCAP confirms that the technology has functioned according to the ASEAN NCAP requirements on both the left and right sides area of the vehicle.



OVERALL RATING

The Hyundai Creta is the sixth model under the Hyundai brand to be assessed by ASEAN NCAP. All of the previous five models were either hatchback or sedan models and thus Creta is the first Hyundai SUV to be assessed by ASEAN NCAP and under its new 2021-2025 protocol. The newly assessed Creta is equipped with 2 airbags as standard across variants. Nevertheless, majority of its markets also offer variants with 6 airbags. The model has a standard fitment of Electronic Stability Control (ESC), Anti-lock Braking System (ABS), Seatbelt Reminder (SBR) for frontal occupants and Pedestrian Protection technology in all its variants. The 5-seater SUV offers advanced safety assist technologies namely Autonomous Emergency Braking (AEB) City, AEB Inter-Urban, AEB Pedestrian, Blind Spot Detection (BSD), Forward Collision Warning (FCW), Lane Keep Assist (LKA), Lane Departure Warning (LDW) and Auto High Beam (AHB) either as standard or optional fitment. Other available safety technologies are Child Presence Detection (CPD) and Rear Cross-Traffic Collision-Avoidance Assist (RCCA) for Motorcycle, which both are offered as optional fitment. The Hyundai Creta made a splendid performance in the assessment with an accumulated score of 75.78 points. With this score the Creta is eligible to be awarded with 5-Star ASEAN NCAP rating.

	AOP			COP			SAFETY ASSIST			MS			2021 - 2025 ASEAN NCAP RATING
	Item	Point	Max	Item	Point	Max	Item	Point	Max	Item	Point	Max	
	ODB	15.61	16.00	FRONTAL	13.50	16.00	EBA	6.00	6.00	BSD/BSV	5.07	8.00	
	SIDE	7.10	8.00	SIDE	8.00	8.00	SBR	3.00	6.00	ARV	-	4.00	
	HPT Evaluation	5.07	8.00	Installation	10.80	12.00	AEB City	1.32	2.50	AHB	1.07	2.00	
				Vehicle Based CPD	7.00	13.00	AEB Inter-Urban	1.87	3.50	Ped. Protection	2.00	2.00	
					0.37	2.00	Advanced SATs	2.60	3.00	Advanced MST*	1.00	2.00	
Score		27.78	32.00		39.67	51.00		14.79	21.00		9.14	16.00	
Normalized Score		0.87			0.78			0.70			0.57		
Weighting		40%			20%			20%			20%		OVERALL SCORE
Weighted Score		34.72			15.56			14.08			11.42		75.78
Maximum Star Rating		5			5			5			5		5

*Bonus Point