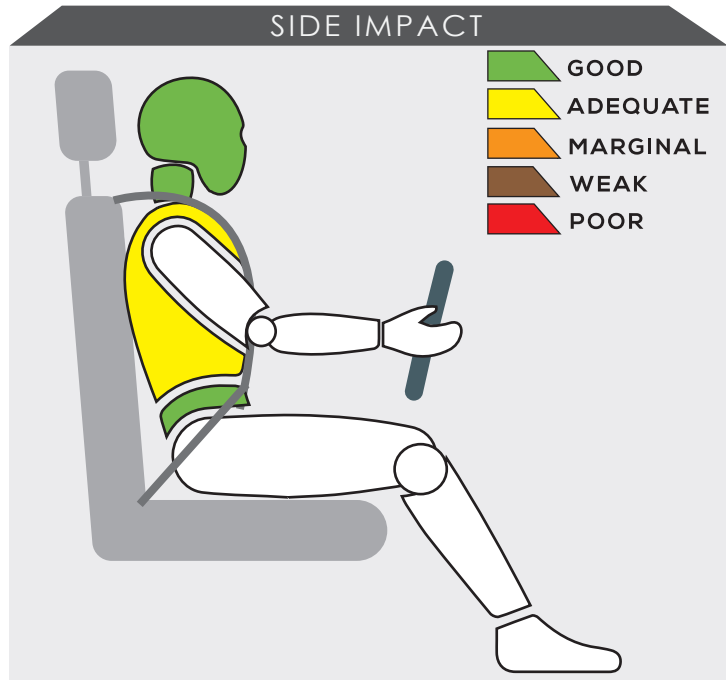
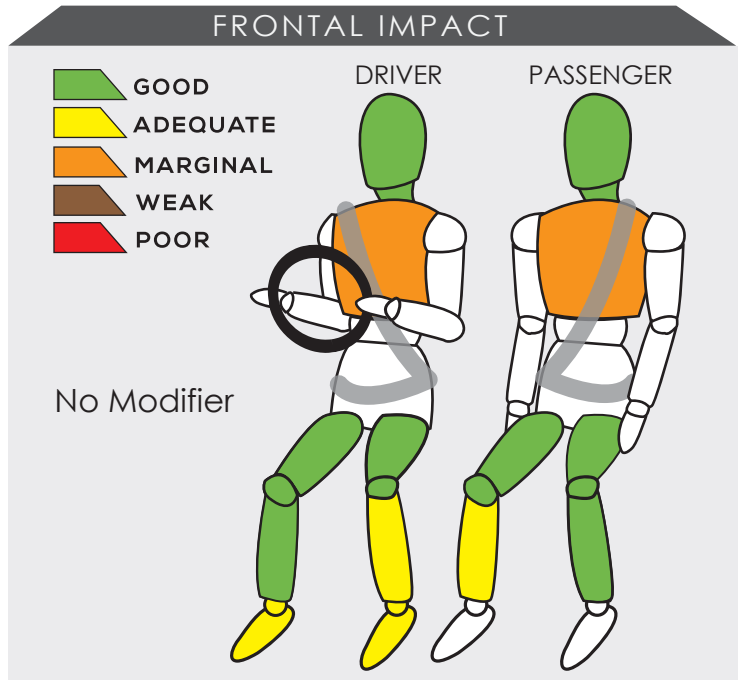


PERODUA ALZA (2022)



Variant 1500 X (CVT)	Year Built 2022
Model Year 2022	Vehicle Category MPV
Engine Capacity 1.5 L	Kerb Mass 1145 kg
No. of Airbags 6	Test Lab PC3 <small>PERODUA SAFETY VEHICLES</small>

TESTED VARIANT ORIGIN	MALAYSIA	FOR	MALAYSIA
OTHER ASEAN PRODUCTION (ALL VARIANTS)	-	FOR	-




In the frontal offset test, the vehicle remained stable and provided good protection to the occupants. Nevertheless, the test data showed there is high possibility both occupants' sustain injuries to the chests and lower legs in a real world crash.

During the side impact test, the driver had an adequate protection to the chest.

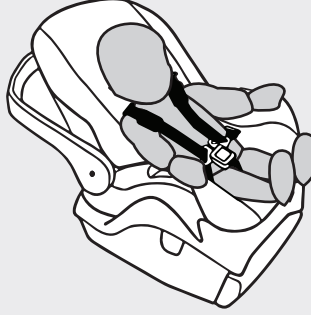

SAFETY ITEMS (PASSIVE)

ITEMS		REGION	ASEAN
Airbags	Driver		Standard on all variants
	Passenger		Standard on all variants
	Side (2)		Standard on all variants
	Curtain (2)		Standard on all variants
	Knee		Not available
Seatbelts	Retractor Pre-tensioner & Load Limiter for Driver		Standard on all variants
	Retractor Pre-tensioner & Load Limiter for Passenger		Standard on all variants

CHILD OCCUPANT PROTECTION	DYNAMIC TEST	VEHICLE BASED	INSTALLATION	CHILD DETECTION	TOTAL
	24.00	9.00	10.04	0.00	43.04



DYNAMIC TEST ASSESSMENT

18-MONTH-OLD CHILD		3-YEAR-OLD CHILD	
Restraint	: Maxi Cosi Cabriofix	Restraint	: Joie Stages ISOFIX
Facing	: Rearward Facing	Facing	: Rearward Facing
Installation	: ISOFIX & Supportleg	Installation	: ISOFIX & Supportleg
			
Frontal Impact	: 8.00	Frontal Impact	: 8.00
Side Impact	: 4.00	Side Impact	: 4.00
Total Performance	: 12.00	Total Performance	: 12.00

CRS INSTALLATION ASSESSMENT

CRS	DIRECTION	SEAT POSITION						
		FRONT	2ND ROW			3RD ROW		
		PASSENGER	LEFT	CENTRE	RIGHT	LEFT	CENTRE	RIGHT
Peg-Perego Primo Viaggio SL	Rwd	EXEMPT	PASS	FAIL	PASS	PASS	N/A	PASS
Joie Stages	Rwd	EXEMPT	PASS	FAIL	PASS	PASS	N/A	PASS
Joie Stages	Fwd	PASS	PASS	FAIL	PASS	FAIL	N/A	FAIL
Combi Buon Junior Air	Fwd	PASS	PASS	FAIL	PASS	PASS	N/A	PASS
Maxi Cosi Cabriofix + Family Fix	Rwd	EXEMPT	PASS	EXEMPT	PASS	EXEMPT	N/A	EXEMPT
Joie Every Stage Fx	Fwd	EXEMPT	PASS	EXEMPT	PASS	EXEMPT	N/A	EXEMPT
Joie Every Stage Fx	Rwd	EXEMPT	PASS	FAIL	PASS	PASS	N/A	PASS
Maxi Cosi Titan Pro	Fwd	EXEMPT	PASS	EXEMPT	PASS	N/A	N/A	N/A
Britax KidFix 2 R	Fwd	PASS	FAIL	FAIL	FAIL	PASS	N/A	PASS
Maxi Cosi Cabriofix + Easy Fix*	Rwd	EXEMPT	PASS	EXEMPT	PASS	N/A	N/A	N/A
Joie Stages ISOFIX*	Rwd	EXEMPT	PASS	EXEMPT	PASS	N/A	N/A	N/A

PASS : Install without problem, FAIL : Safety critical problem, EXEMPT : Installation not allowed, N/A : Not available
 *Manufacturer's selection



ITEMS	ASEAN
--------------	--------------

Effective Braking & Avoidance
--

Anti-lock Braking System	Standard on all variants
Electronic Stability Control	Standard on all variants

Seatbelt Reminders

Driver	Standard on all variants
Front Passenger	Standard on all variants
Rear Passengers	Standard on all variants
Rear Seat Occupant Detection	Not available

Autonomous Emergency Braking

City	Standard on all variants
Inter-Urban	Standard on all variants
Pedestrian	Standard on all variants

Advanced Safety Assist Technologies
--

Lane Departure Warning System	Available as standard or optional
Forward Collision Warning System	Available as standard or optional
Lane Keep Assist	Available as standard or optional

AUTONOMOUS EMERGENCY BRAKING ASSESSMENT
--



ASEAN NCAP is introducing the Autonomous Emergency Braking (AEB) system functionality assessment in its new 2021-2025 protocol. In the protocol, ASEAN NCAP assessed the functionality and effectiveness of AEB City and AEB Inter-Urban systems fitted inside the vehicle in performing emergency braking at several speeds against another preceding vehicle. Both the AEB City and Inter-Urban systems are available in the new Perodua Alza as standard fitment across all variants. In this assessment, ASEAN NCAP confirms the technologies have functioned according to ASEAN NCAP requirements.



ITEMS	ASEAN
Blind Spot Detection	
Nearside	Available as standard or optional
Offside	Available as standard or optional
Rear Visualization	
Advanced Rear Visualization	Not available
Headlight	
Auto High Beam	Standard on all variants
Pedestrian	
Pedestrian Protection	Standard on all variants
Advanced Motorcyclist Safety Technology	
Nil	-

BLIND SPOT DETECTION ASSESSMENT





Starting from the 2017-2020 protocol, ASEAN NCAP had introduced assessment on the functionality of Blind Spot Technology fitted inside the assessed vehicle. ASEAN NCAP continues the assessment under the new Motorcyclist Safety pillar for the new 2021-2025 protocol. The new Perodua Alza is equipped with Blind Spot Detection (BSD) on the driver and passenger sides of the vehicle as standard or optional fitment. In this assessment, ASEAN NCAP confirms the technology has functioned according to ASEAN NCAP requirements on both the left and right sides area of the vehicle.



OVERALL RATING

ASEAN NCAP performed its first assessment on the Perodua Alza in June 2013 in which the MPV was awarded with 4-Star rating for its AOP and 46% compatibility for the COP category. After 8 years since the last assessment, Perodua has taken a huge leap by having the MPV to undergo ASEAN NCAP's new 2021-2025 assessment protocol. The new Perodua Alza sold for the Malaysian market is fitted with 6 airbags as standard across its variants. In addition, the model is equipped with standard fitment of Anti-lock Braking System, Electronic Stability Control, Seat Belt Reminder system for both frontal and rear occupants, Autonomous Emergency Braking (AEB) City and AEB Inter-Urban, Auto High Beam and Pedestrian Protection technology. The 7-seater MPV also offers Blind Spot Detection, Lane Departure Warning, Forward Collision Warning and Lane Keep Assist either as standard or optional equipment. In this assessment the new Perodua Alza obtained an overall score of 81.64 points based on the AOP, COP, SA and MS categories, which placed the MPV to be eligible to be awarded with 5-Star ASEAN NCAP rating.

	AOP			COP			SAFETY ASSIST			MS			2021 - 2025 ASEAN NCAP RATING
	Item	Point	Max	Item	Point	Max	Item	Point	Max	Item	Point	Max	
	ODB	13.34	16.00	FRONTAL	16.00	16.00	EBA	6.00	6.00	BSD/BSV	4.00	8.00	
	SIDE	7.62	8.00	SIDE	8.00	8.00	SBR	4.50	6.00	ARV	-	4.00	
	HPT Evaluation	8.00	8.00	Installation	10.04	12.00	AEB City	2.50	2.50	AHB	2.00	2.00	
				Vehicle Based	9.00	13.00	AEB Inter-Urban	3.50	3.50	Ped. Protection	2.00	2.00	
				CPD	-	2.00	Advanced SATs	3.00	3.00	Advanced MST*	-	2.00	
Score		28.96	32.00		43.04	51.00		19.50	21.00		8.00	16.00	
Normalized Score		0.90			0.84			0.93			0.50		
Weighting		40%			20%			20%			20%		OVERALL SCORE
Weighted Score		36.20			16.88			18.57			10.00		81.64
Maximum Star Rating		5			5			5			5		5

*Bonus Point