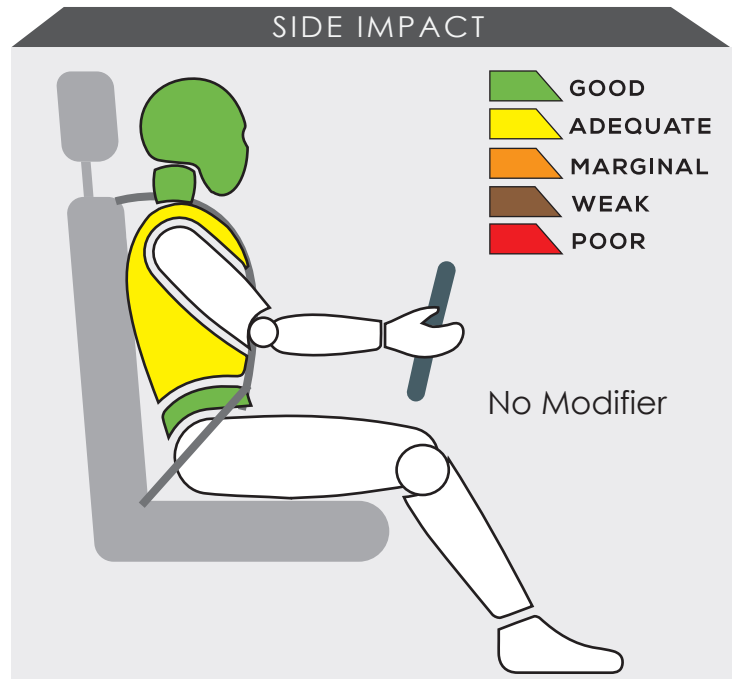
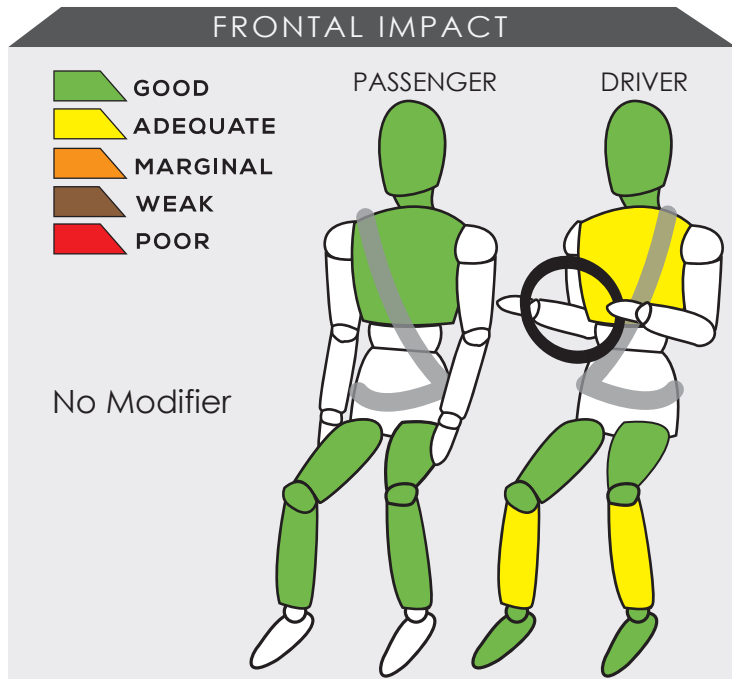


MITSUBISHI OUTLANDER



Variant 2.0 CVT	Year Built 2020
Model Year 2020	Vehicle Category SUV
Engine Capacity 2.0 L	Kerb Mass 1505 kg
No. of Airbags 2	Test Lab JARI

TESTED VARIANT ORIGIN	VIETNAM	FOR	VIETNAM
OTHER ASEAN PRODUCTION (ALL VARIANTS)	MALAYSIA	FOR	MALAYSIA
	JAPAN		SINGAPORE



The passenger compartment remained stable during the frontal offset test. Data from the dummies showed both the driver and passenger were well protected during the test. Nevertheless, there was adequate protection given to the driver's chest and both lower legs.

Dummy readings showed there was adequate protection given to the driver's chest during the side impact test.

SAFETY ITEMS (PASSIVE)

ITEMS		COUNTRIES										
Airbags	Driver	NS	NS	NS	NS	S	NS	NS	S	NS	S	
	Passenger	NS	NS	NS	NS	S	NS	NS	S	NS	S	
	Side (2)	NS	NS	NS	NS	S	NS	NS	S	NS	O	
	Curtain (2)	NS	NS	NS	NS	S	NS	NS	S	NS	O	
	Knee (1)	NS	NS	NS	NS	S	NS	NS	S	NS	O	
Seatbelts	Retractor Pre-tensioner & Load Limiter for Driver	NS	NS	NS	NS	S	NS	NS	S	NS	S	
	Retractor Pre-tensioner & Load Limiter for Passenger	NS	NS	NS	NS	S	NS	NS	S	NS	S	

S: Standard on all variants, O: Optional on base; Standard on higher variants, X: Not available, TBA: To be advised, NS: Not sold



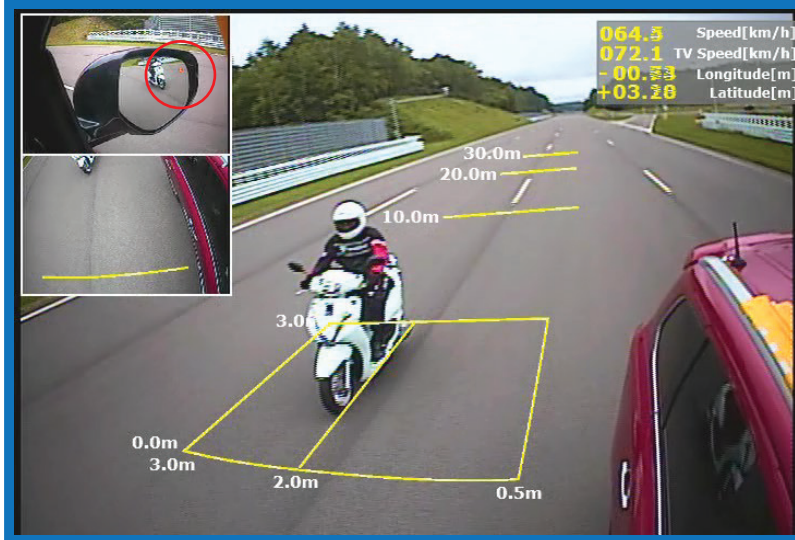
DYNAMIC TEST ASSESSMENT	
18-MONTH-OLD CHILD	3-YEAR-OLD CHILD
Restraint : Britax Baby Safe Plus Facing : Rearward Facing Installation : ISOFIX & Supportleg	Restraint : Britax Duo Plus Facing : Forward Facing Installation : ISOFIX & Top Tether
Frontal Impact : 8.00 Side Impact : 4.00 Total Performance : 12.00	Frontal Impact : 6.70 Side Impact : 4.00 Total Performance : 10.70

CRS INSTALLATION ASSESSMENT

CRS	DIRECTION	SEAT POSITION						
		FRONT	2ND ROW			3RD ROW		
		PASSENGER	LEFT	CENTRE	RIGHT	LEFT	CENTRE	RIGHT
Maxi Cosi Cabriofix	Rwd	EXEMPT	PASS	PASS	PASS	PASS	N/A	PASS
Combi Malgot	Rwd	EXEMPT	PASS	FAIL	PASS	FAIL	N/A	FAIL
Combi Malgot	Fwd	PASS	PASS	PASS	PASS	PASS	N/A	PASS
Combi Buon Junior Air	Fwd	PASS	PASS	PASS	PASS	FAIL	N/A	FAIL
Britax Baby Safe Plus ISOFIX Base	Rwd	EXEMPT	PASS	EXEMPT	PASS	N/A	N/A	N/A
Maxi Cosi Milofix	Rwd	EXEMPT	PASS	EXEMPT	PASS	N/A	N/A	N/A
Maxi Cosi Milofix	Fwd	EXEMPT	PASS	EXEMPT	PASS	N/A	N/A	N/A
Britax Duo Plus	Fwd	EXEMPT	PASS	EXEMPT	PASS	N/A	N/A	N/A
Britax KidFix XP	Fwd	PASS	PASS	FAIL	PASS	PASS	N/A	PASS
Britax Baby Safe Plus ISOFIX Base*	Rwd	EXEMPT	PASS	EXEMPT	PASS	N/A	N/A	N/A
Britax Duo Plus*	Fwd	EXEMPT	PASS	EXEMPT	PASS	N/A	N/A	N/A

PASS: Install without problem, FAIL: Safety critical problem, EXEMPT: Installation not allowed, N/A: Not available
 *Manufacturer's selection

BLIND SPOT TECHNOLOGY ASSESSMENT



ASEAN NCAP has introduced Blind Spot Technology (BST) in its new 2017-2020 protocol. In the protocol, ASEAN NCAP assessed the functionality of each BST that are fitted inside the vehicle. The Mitsubishi Outlander, of the non-hybrid model, is equipped with BST fitment as an option on both sides of the vehicle for the Vietnam market. In this assessment, ASEAN NCAP confirms that the technology has functioned according to ASEAN NCAP requirements on both the left and right side area of the vehicle.

