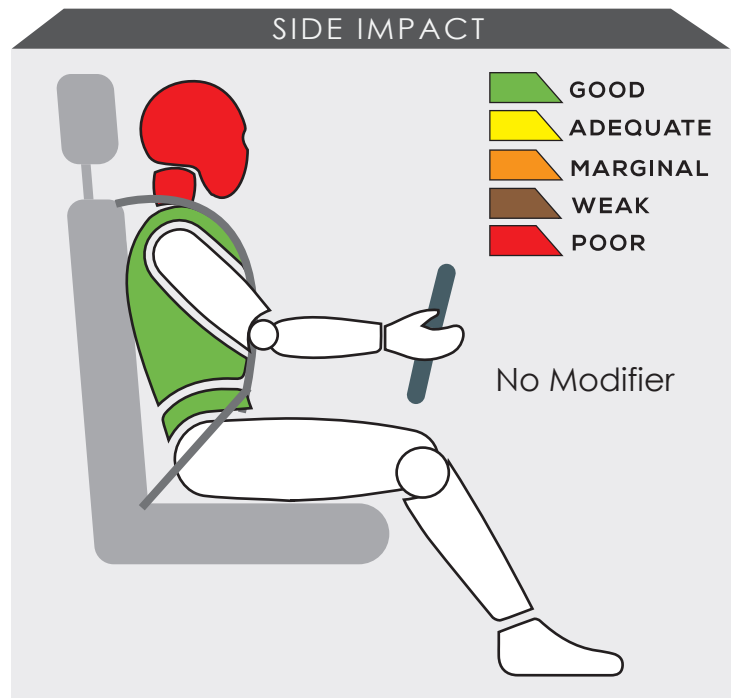
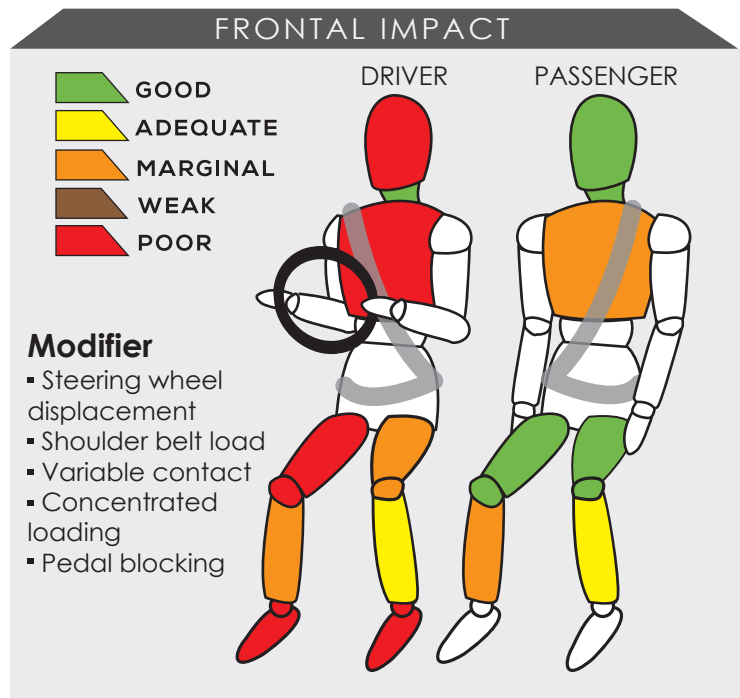


CHANA ERA STAR II



Variant ERA STAR II	Year Built 2019
Model Year 2019	Vehicle Category SEMI PANEL VAN
Engine Capacity 1.3 L	Kerb Mass 1115 kg
No. of Airbags 0	Test Lab PC3

TESTED VARIANT ORIGIN	MALAYSIA	FOR	MALAYSIA
OTHER ASEAN PRODUCTION (ALL VARIANTS)	-	FOR	-



Dummy readings showed the driver sustained serious injury to the whole body in the frontal impact test whilst the front passenger had marginal protection to its chest and lower legs.

The driver received serious injury to the head during the side impact test.

SAFETY ITEMS (PASSIVE)

ITEMS		COUNTRIES										
Airbags	Driver	NS	NS	NS	NS	X	NS	NS	NS	NS	NS	
	Passenger	NS	NS	NS	NS	X	NS	NS	NS	NS	NS	
	Side	NS	NS	NS	NS	X	NS	NS	NS	NS	NS	
	Curtain	NS	NS	NS	NS	X	NS	NS	NS	NS	NS	
Seatbelts	Retractor Pre-tensioner & Load Limiter for Driver	NS	NS	NS	NS	S	NS	NS	NS	NS	NS	
	Retractor Pre-tensioner & Load Limiter for Passenger	NS	NS	NS	NS	S	NS	NS	NS	NS	NS	

S: Standard on all variants, O: Optional on base; Standard on higher variants, X: Not available, TBA: To be advised, NS: Not sold



DYNAMIC TEST ASSESSMENT	
18-MONTH-OLD CHILD	3-YEAR-OLD CHILD
Restraint : - Facing : - Installation : -	Restraint : Britax Duo Plus Facing : Forward Facing Installation : Seatbelt
Frontal Impact : - Side Impact : - Total Performance : -	Frontal Impact : 7.89 Side Impact : 4.00 Total Performance : 11.89

CRS INSTALLATION ASSESSMENT

CRS	DIRECTION	SEAT POSITION						
		FRONT	2ND ROW			3RD ROW		
		PASSENGER	LEFT	CENTRE	RIGHT	LEFT	CENTRE	RIGHT
Maxi Cosi Cabriofix	Rwd	PASS	FAIL	FAIL	FAIL	N/A	N/A	N/A
Combi Malgot	Rwd	PASS	FAIL	FAIL	FAIL	N/A	N/A	N/A
Combi Malgot	Fwd	PASS	PASS	PASS	PASS	N/A	N/A	N/A
Combi Buon Junior Air	Fwd	PASS	PASS	FAIL	PASS	N/A	N/A	N/A
Britax Baby Safe Plus ISOFIX Base	Rwd	EXEMPT	EXEMPT	EXEMPT	EXEMPT	N/A	N/A	N/A
Maxi Cosi Milofix	Rwd	EXEMPT	EXEMPT	EXEMPT	EXEMPT	N/A	N/A	N/A
Maxi Cosi Milofix	Fwd	EXEMPT	EXEMPT	EXEMPT	EXEMPT	N/A	N/A	N/A
Britax Duo Plus	Fwd	EXEMPT	EXEMPT	EXEMPT	EXEMPT	N/A	N/A	N/A
Britax KidFix XP	Fwd	PASS	PASS	FAIL	FAIL	N/A	N/A	N/A
Britax Baby Safe Plus (Seatbelt)*	Rwd	FAIL	FAIL	FAIL	FAIL	N/A	N/A	N/A
Britax Duo Plus (Seatbelt)*	Fwd	PASS	PASS	PASS	PASS	N/A	N/A	N/A

PASS: Install without problem, FAIL: Safety critical problem, EXEMPT: Installation not allowed, N/A: Not available
 *ASEAN NCAP's selection



Effective Braking & Avoidance

ABS	NS	NS	NS	NS	X	NS	NS	NS	NS	NS
ESC	NS	NS	NS	NS	X	NS	NS	NS	NS	NS

Seatbelt Reminders

Driver	NS	NS	NS	NS	X	NS	NS	NS	NS	NS
Front Passengers	NS	NS	NS	NS	X	NS	NS	NS	NS	NS
Rear Passengers	NS	NS	NS	NS	X	NS	NS	NS	NS	NS

Blind Spot Technology

Nearside	NS	NS	NS	NS	X	NS	NS	NS	NS	NS
Offside	NS	NS	NS	NS	X	NS	NS	NS	NS	NS

Advanced Safety Assist Technologies

AEB City	NS	NS	NS	NS	X	NS	NS	NS	NS	NS
AEB Inter-Urban	NS	NS	NS	NS	X	NS	NS	NS	NS	NS
AEB VRU	NS	NS	NS	NS	X	NS	NS	NS	NS	NS
Lane Departure Warning System	NS	NS	NS	NS	X	NS	NS	NS	NS	NS
Forward Collision Warning System	NS	NS	NS	NS	X	NS	NS	NS	NS	NS
Lane Keep Assist	NS	NS	NS	NS	X	NS	NS	NS	NS	NS

○ : Available, X : Not available, TBA : To be advised, NS : Not sold

OVERALL RATING

The Chana Era Star II is one of the first assessments that ASEAN NCAP performed on a semi panel van. The outcome of the test showed that the commercial van did not perform very well with no points at all for both its Adult Occupant Protection and Safety Assist categories. As for its Child Occupant Protection assessment, ASEAN NCAP was not able to conduct the dynamic test on the Q1.5 dummy as the seatbelt, the only restraint method for child safety seats in the van, was not long enough for a rear facing position seat. Nevertheless, it scored 10.91 points for the category, which is the only contributing points for the panel van. The Era Star II was not equipped with any airbag and any safety assist technologies, namely Electronic Stability Control and Seatbelt Reminder System. With a total score of 10.91 points, the Chana Era Star II obtained Zero-Star ASEAN NCAP rating.

CHANA ERA STAR II TESTED OCTOBER 2018 ZERO STAR ASEAN NCAP www.aseanncap.org	AOP			COP			SAFETY ASSIST			2017 - 2020 ASEAN NCAP RATING
	Item	Point	Max	Item	Point	Max	Item	Point	Max	
	ODB	-	16.00	FRONTAL	7.89	16.00	EBA	-	8.00	0
	SIDE	-	16.00	SIDE	4.00	8.00	SBR	-	6.00	
	HPT Evaluation	-	4.00	Installation	6.50	12.00	BST	-	2.00	
				Vehicle Based	3.00	13.00	Advanced SATs	-	2.00	
Score		-	36.00		21.39	49.00		-	18.00	
Normalized Score		0.00			0.44			0.00		
Weighting		50%			25%			25%		
Weighted Score		0.00			10.91			0.00		
Maximum Star Rating		0			3			0		
OVERALL SCORE										10.91
OVERALL SCORE										0

