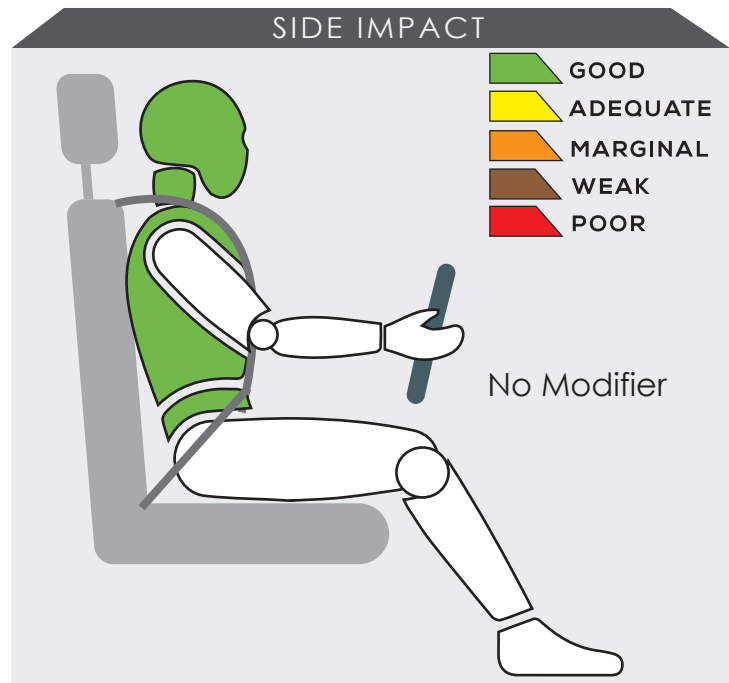
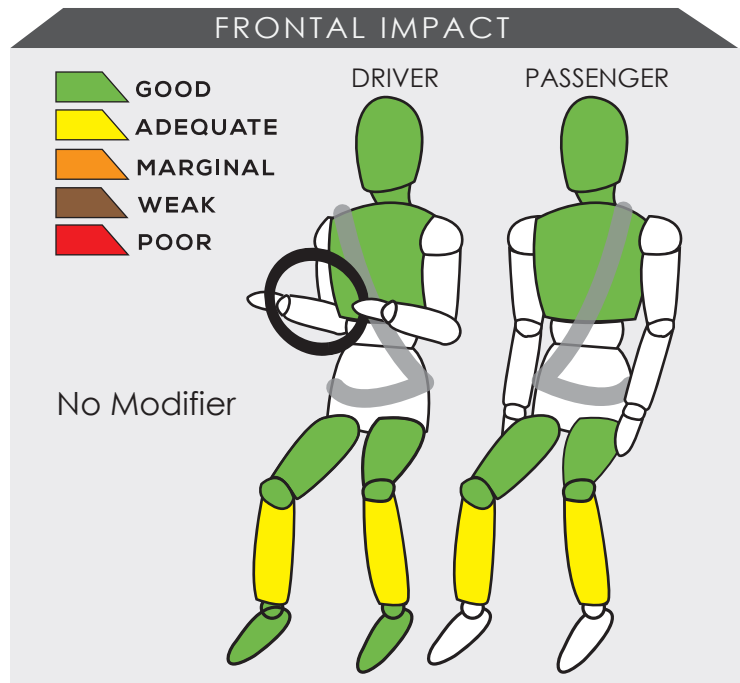


HONDA ACCORD



Variant E	Year Built 2019
Model Year 2019	Vehicle Category SEDAN
Engine Capacity 1.5 L	Kerb Mass 1465 kg
No. of Airbags 6	Test Lab JARI

TESTED VARIANT ORIGIN	THAILAND	FOR	THAILAND
OTHER ASEAN PRODUCTION (ALL VARIANTS)	THAILAND	FOR	THAILAND, BRUNEI, SINGAPORE, PHILIPPINES, LAOS, VIETNAM, INDONESIA
	MALAYSIA		MALAYSIA



The car's frontal occupant compartment remained stable in the frontal offset test. The test data showed the vehicle provided good protection to both the driver and front passenger, except for the dummies' lower legs.

The performance of HPT was confirmed with additional deployment test and its score was determined based on Fitment Rating System (FRS).

SAFETY ITEMS (PASSIVE)

ITEMS		COUNTRIES									
Airbags	Driver	S	S	NS	S	S	NS	S	S	S	S
	Passenger	S	S	NS	S	S	NS	S	S	S	S
	Side (2)	S	S	NS	S	S	NS	S	S	S	S
	Curtain (2)	S	S	NS	S	S	NS	S	S	S	S
Seatbelts	Retractor Pre-tensioner & Load Limiter for Driver	S	S	NS	S	S	NS	S	S	S	S
	Retractor Pre-tensioner & Load Limiter for Passenger	S	S	NS	S	S	NS	S	S	S	S

S : Standard on all variants, O : Optional on base; Standard on higher variants, X : Not available, TBA : To be advised, NS : Not sold



DYNAMIC TEST ASSESSMENT

18-MONTH-OLD CHILD		3-YEAR-OLD CHILD	
Restraint	: Honda Babysafe ISOFIX	Restraint	: Honda ISOFIX
Facing	: Rearward Facing	Facing	: Forward Facing
Installation	: ISOFIX & Supportleg	Installation	: ISOFIX & Top Tether
Frontal Impact	: 7.97	Frontal Impact	: 7.65
Side Impact	: 4.00	Side Impact	: 4.00
Total Performance	: 11.97	Total Performance	: 11.65

CRS INSTALLATION ASSESSMENT

CRS	DIRECTION	SEAT POSITION						
		FRONT	2ND ROW			3RD ROW		
		PASSENGER	LEFT	CENTRE	RIGHT	LEFT	CENTRE	RIGHT
Maxi Cosi Cabriofix	Rwd	EXEMPT	PASS	PASS	PASS	N/A	N/A	N/A
Combi Malgot	Rwd	EXEMPT	PASS	PASS	PASS	N/A	N/A	N/A
Combi Malgot	Fwd	PASS	PASS	PASS	PASS	N/A	N/A	N/A
Combi Buon Junior Air	Fwd	PASS	PASS	PASS	PASS	N/A	N/A	N/A
Britax Baby Safe Plus ISOFIX Base	Rwd	EXEMPT	PASS	EXEMPT	PASS	N/A	N/A	N/A
Maxi Cosi Milofix	Rwd	EXEMPT	PASS	EXEMPT	PASS	N/A	N/A	N/A
Maxi Cosi Milofix	Fwd	EXEMPT	PASS	EXEMPT	PASS	N/A	N/A	N/A
Britax Duo Plus	Fwd	EXEMPT	PASS	EXEMPT	PASS	N/A	N/A	N/A
Britax KidFix XP	Fwd	PASS	PASS	PASS	PASS	N/A	N/A	N/A
Honda Babysafe ISOFIX*	Rwd	EXEMPT	PASS	EXEMPT	PASS	N/A	N/A	N/A
Honda ISOFIX*	Fwd	EXEMPT	PASS	EXEMPT	PASS	N/A	N/A	N/A

PASS : Install without problem, FAIL : Safety critical problem, EXEMPT : Installation not allowed, N/A : Not available
*Manufacturer's selection

BLIND SPOT TECHNOLOGY ASSESSMENT



ASEAN NCAP has introduced Blind Spot Technology (BST) in its new 2017-2020 protocol. In the protocol, ASEAN NCAP assessed the functionality of each BST introduced in the car. The Honda Accord is equipped with a Blind Spot Visualization (BSV) as a standard fitment for its passenger's side in the countries where it is available. In this assessment, ASEAN NCAP confirms that the technology has functioned according to the ASEAN NCAP requirements on the left side area of the vehicle.

