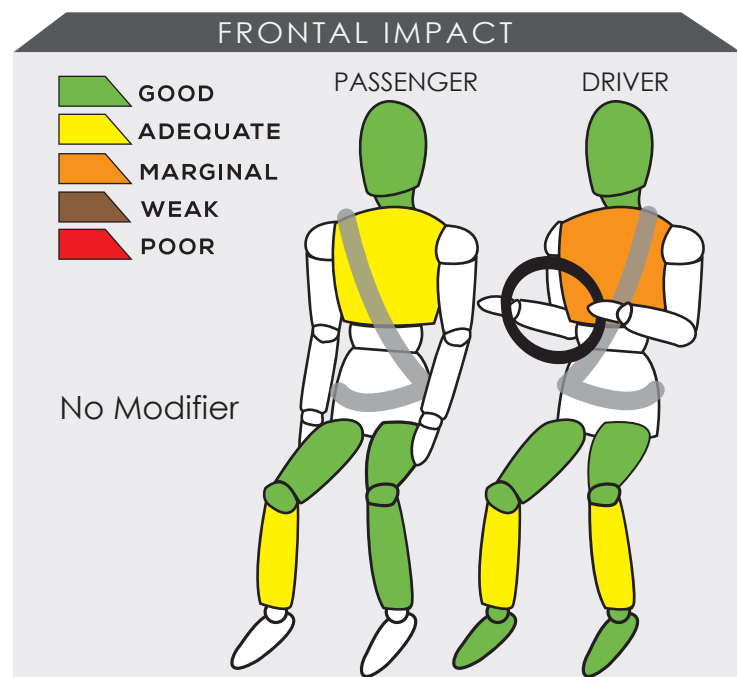


VINFAST LUX SA2.0

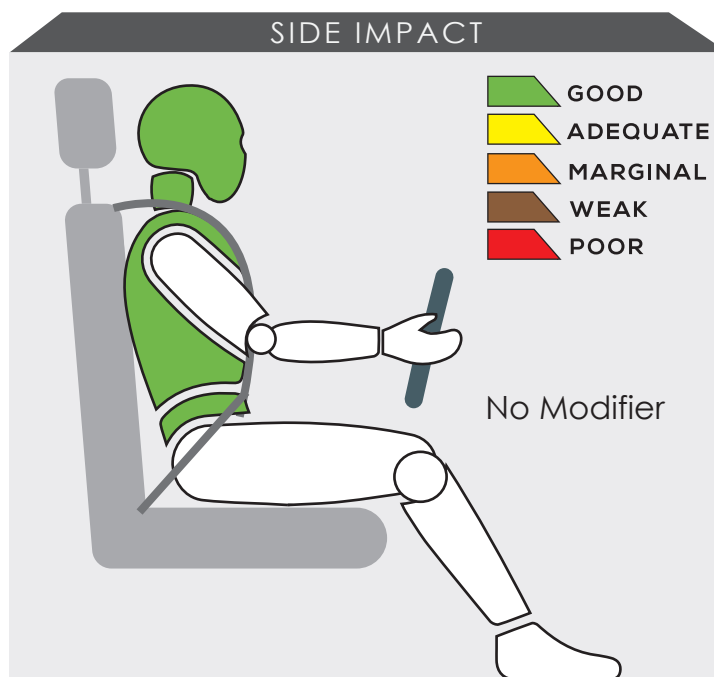


Variant 2.0V AWD 8AT	Year Built 2019
Model Year 2019	Vehicle Category SUV
Engine Capacity 2.0 L	Kerb Mass 2100 kg
No. of Airbags 6	Test Lab CNTRC

TESTED VARIANT ORIGIN	VIETNAM	FOR	VIETNAM
OTHER ASEAN PRODUCTION (ALL VARIANTS)	-	FOR	-



The data showed the vehicle provided good protection to the occupants with its passenger compartment remained stable in the frontal offset test. However, both occupants' chests received marginal and adequate protection, as well as the lower legs.



The performance of HPT was confirmed with additional deployment test and its score was determined based on Fitment Rating System (FRS).

SAFETY ITEMS (PASSIVE)

ITEMS		COUNTRIES										
Airbags	Driver	NS	NS	NS	NS	NS	NS	NS	NS	NS	S	
	Passenger	NS	NS	NS	NS	NS	NS	NS	NS	NS	S	
	Side (2)	NS	NS	NS	NS	NS	NS	NS	NS	NS	S	
	Curtain (2)	NS	NS	NS	NS	NS	NS	NS	NS	NS	S	
Seatbelts	Retractor Pre-tensioner & Load Limiter for Driver	NS	NS	NS	NS	NS	NS	NS	NS	NS	S	
	Retractor Pre-tensioner & Load Limiter for Passenger	NS	NS	NS	NS	NS	NS	NS	NS	NS	S	

S: Standard on all variants, O : Optional on base; Standard on higher variants, X : Not available, TBA : To be advised, NS : Not sold



DYNAMIC TEST ASSESSMENT	
18-MONTH-OLD CHILD	3-YEAR-OLD CHILD
Restraint : Britax Baby Safe Plus ISOFIX Facing : Rearward Facing Installation : ISOFIX & Supportleg	Restraint : Maxi Cosy 2 Way Pearl Facing : Rearward Facing Installation : ISOFIX & Supportleg
Frontal Impact : 8.00 Side Impact : 4.00 Total Performance : 12.00	Frontal Impact : 8.00 Side Impact : 4.00 Total Performance : 12.00

CRS INSTALLATION ASSESSMENT

CRS	DIRECTION	SEAT POSITION						
		FRONT	2ND ROW			3RD ROW		
		PASSENGER	LEFT	CENTRE	RIGHT	LEFT	CENTRE	RIGHT
Maxi Cosi Cabriofix	Rwd	EXEMPT	PASS	PASS	PASS	PASS	EXEMPT	PASS
Combi Malgot	Rwd	EXEMPT	PASS	PASS	PASS	FAIL	EXEMPT	FAIL
Combi Malgot	Fwd	PASS	PASS	PASS	PASS	PASS	EXEMPT	PASS
Combi Buon Junior Air	Fwd	PASS	PASS	PASS	PASS	PASS	EXEMPT	PASS
Britax Baby Safe Plus ISOFIX Base	Rwd	EXEMPT	PASS	EXEMPT	PASS	EXEMPT	EXEMPT	EXEMPT
Maxi Cosi Milofix	Rwd	EXEMPT	PASS	EXEMPT	PASS	EXEMPT	EXEMPT	EXEMPT
Maxi Cosi Milofix	Fwd	EXEMPT	PASS	EXEMPT	PASS	EXEMPT	EXEMPT	EXEMPT
Britax Duo Plus	Fwd	EXEMPT	PASS	EXEMPT	PASS	EXEMPT	EXEMPT	EXEMPT
Britax KidFix XP	Fwd	EXEMPT	PASS	PASS	PASS	EXEMPT	EXEMPT	EXEMPT
Britax Baby Safe Plus ISOFIX Base*	Rwd	EXEMPT	PASS	EXEMPT	PASS	EXEMPT	EXEMPT	EXEMPT
Maxi Cosy 2 Way Pearl*	Rwd	EXEMPT	PASS	EXEMPT	PASS	EXEMPT	EXEMPT	EXEMPT

PASS : Install without problem, FAIL : Safety critical problem, EXEMPT : Installation not allowed, N/A : Not available

*Manufacturer's selection



Effective Braking & Avoidance

ABS	NS	NS	NS	NS	NS	NS	NS	NS	NS	NS	O
ESC	NS	NS	NS	NS	NS	NS	NS	NS	NS	NS	O

Seatbelt Reminders

Driver	NS	NS	NS	NS	NS	NS	NS	NS	NS	NS	O
Front Passengers	NS	NS	NS	NS	NS	NS	NS	NS	NS	NS	O
Rear Passengers	NS	NS	NS	NS	NS	NS	NS	NS	NS	NS	X

Blind Spot Technology

Nearside	NS	NS	NS	NS	NS	NS	NS	NS	NS	NS	X
Offside	NS	NS	NS	NS	NS	NS	NS	NS	NS	NS	X

Advanced Safety Assist Technologies

AEB City	NS	NS	NS	NS	NS	NS	NS	NS	NS	NS	X
AEB Inter-Urban	NS	NS	NS	NS	NS	NS	NS	NS	NS	NS	X
AEB VRU	NS	NS	NS	NS	NS	NS	NS	NS	NS	NS	X
Lane Departure Warning System	NS	NS	NS	NS	NS	NS	NS	NS	NS	NS	X
Forward Collision Warning System	NS	NS	NS	NS	NS	NS	NS	NS	NS	NS	X
Lane Keep Assist	NS	NS	NS	NS	NS	NS	NS	NS	NS	NS	X

O : Available, X : Not available, TBA : To be advised, NS : Not sold

OVERALL RATING

The new VinFast Lux SA2.0 is the first SUV under the VinFast brand tested by ASEAN NCAP. The SUV made a great achievement with 46.45 points for the Adult Occupant Protection category with six airbags fitted as standard across variants. The Left-Hand-Drive SUV achieved 22.73 points for its Child Occupant Protection assessment where it successfully met full score for its dynamic assessment. In the Safety Assist Technologies category, the model has a standard fitment of Electronic Stability Control and Seatbelt Reminder System for both of its frontal occupants. The VinFast Lux SA2.0 obtained a total score of 84.46 points in which it is eligible to receive 5-Star ASEAN NCAP rating.

	AOP			COP			SAFETY ASSIST			2017 - 2020 ASEAN NCAP RATING
	Item	Point	Max	Item	Point	Max	Item	Point	Max	
Score	ODB	13.45	16.00	FRONTAL	16.00	16.00	EBA	8.00	8.00	5
Normalized Score	SIDE	16.00	16.00	SIDE	8.00	8.00	SBR	3.00	6.00	
Weighting	HPT Evaluation	4.00	4.00	Installation	11.56	12.00	BST	-	2.00	
Weighted Score				Vehicle Based	9.00	13.00	Advanced SATs	-	2.00	
Maximum Star Rating										
		33.45	36.00		44.56	49.00		11.00	18.00	OVERALL SCORE
		0.93			0.91			0.61		84.46
		50%			25%			25%		5
		46.45			22.73			15.28		
		5			5			5		

