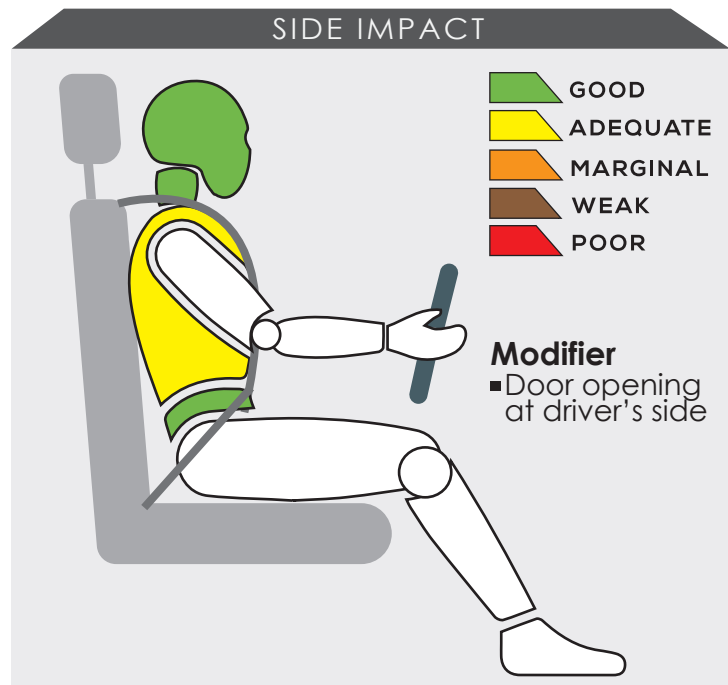
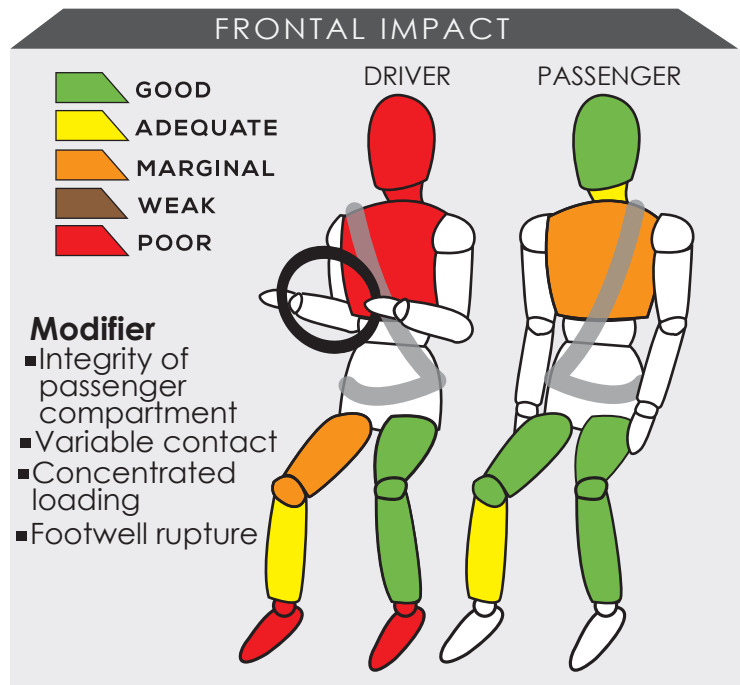


# WULING CONFERO



Variant 1.5L DVVT	Year Built 2018
Model Year 2018	Vehicle Category MPV
Engine Capacity 1.5 L	Kerb Mass 1215 kg
No. of Airbags 0	Test Lab 

TESTED VARIANT ORIGIN	INDONESIA	FOR	INDONESIA
OTHER ASEAN PRODUCTION (ALL VARIANTS)	-	FOR	-



Dummy readings showed the driver sustained fatal injury to the head and chest. The front passenger's chest also received marginal protection in this frontal impact test.

The MPV gave adequate protection to the driver's chest in the side impact test.

## SAFETY ITEMS (PASSIVE)

ITEMS		COUNTRIES									
Airbags	Driver	NS	O	NS	NS	NS	NS	NS	NS	NS	NS
	Passenger	NS	O	NS	NS	NS	NS	NS	NS	NS	NS
	Side	NS	X	NS	NS	NS	NS	NS	NS	NS	NS
	Curtain	NS	X	NS	NS	NS	NS	NS	NS	NS	NS
Seatbelts	Retractor Pre-tensioner & Load Limiter for Driver	NS	S	NS	NS	NS	NS	NS	NS	NS	NS
	Retractor Pre-tensioner & Load Limiter for Passenger	NS	S	NS	NS	NS	NS	NS	NS	NS	NS

S: Standard on all variants, O : Optional on base; Standard on higher variants, X : Not available, TBA : To be advised, NS : Not sold



### DYNAMIC TEST ASSESSMENT

18-MONTH-OLD CHILD		3-YEAR-OLD CHILD	
<b>Restraint</b>	: Britax Baby Safe Plus	<b>Restraint</b>	: Britax Duo Plus
<b>Facing</b>	: Rearward Facing	<b>Facing</b>	: Forward Facing
<b>Installation</b>	: Adult Seatbelt	<b>Installation</b>	: ISOFIX
<b>Frontal Impact</b>	: 7.52	<b>Frontal Impact</b>	: 2.60
<b>Side Impact</b>	: 4.00	<b>Side Impact</b>	: 4.00
<b>Total Performance</b>	: 11.52	<b>Total Performance</b>	: 6.60

## CRS INSTALLATION ASSESSMENT

CRS	DIRECTION	SEAT POSITION						
		FRONT	2ND ROW			3RD ROW		
		PASSENGER	LEFT	CENTRE	RIGHT	LEFT	CENTRE	RIGHT
Maxi Cosi Cabriofix	Rwd	FAIL	PASS	FAIL	PASS	FAIL	FAIL	FAIL
Combi Malgot	Rwd	FAIL	FAIL	FAIL	FAIL	FAIL	FAIL	FAIL
Combi Malgot	Fwd	PASS	PASS	FAIL	PASS	PASS	FAIL	PASS
Combi Buon Junior Air	Fwd	PASS	PASS	FAIL	PASS	PASS	FAIL	PASS
Britax Baby Safe Plus ISOFIX Base	Rwd	EXEMPT	EXEMPT	EXEMPT	FAIL	EXEMPT	EXEMPT	EXEMPT
Maxi Cosi Milofix	Rwd	EXEMPT	EXEMPT	EXEMPT	FAIL	EXEMPT	EXEMPT	EXEMPT
Maxi Cosi Milofix	Fwd	EXEMPT	EXEMPT	EXEMPT	FAIL	EXEMPT	EXEMPT	EXEMPT
Britax Duo Plus	Fwd	EXEMPT	EXEMPT	EXEMPT	FAIL	EXEMPT	EXEMPT	EXEMPT
Britax KidFix XP	Fwd	PASS	PASS	FAIL	FAIL	PASS	FAIL	PASS
Britax Baby Safe Plus ISOFIX Base*	Rwd	EXEMPT	EXEMPT	EXEMPT	FAIL	EXEMPT	EXEMPT	EXEMPT
Britax Duo Plus*	Fwd	EXEMPT	EXEMPT	EXEMPT	FAIL	EXEMPT	EXEMPT	EXEMPT

PASS : Install without problem, FAIL : Safety critical problem, EXEMPT : Installation not allowed, N/A : Not available  
\*ASEAN NCAP's selection



**Effective Braking & Avoidance**

ABS	NS	O	NS	NS	NS	NS	NS	NS	NS	NS
ESC	NS	X	NS	NS	NS	NS	NS	NS	NS	NS

**Seatbelt Reminders**

Driver	NS	O	NS	NS	NS	NS	NS	NS	NS	NS
Front Passengers	NS	O	NS	NS	NS	NS	NS	NS	NS	NS
Rear Passengers	NS	X	NS	NS	NS	NS	NS	NS	NS	NS

**Blind Spot Technology**

Nearside	NS	X	NS	NS	NS	NS	NS	NS	NS	NS
Offside	NS	X	NS	NS	NS	NS	NS	NS	NS	NS


**Advanced Safety Assist Technologies**

AEB City	NS	X	NS	NS	NS	NS	NS	NS	NS	NS
AEB Inter-Urban	NS	X	NS	NS	NS	NS	NS	NS	NS	NS
AEB VRU	NS	X	NS	NS	NS	NS	NS	NS	NS	NS
Lane Departure Warning System	NS	X	NS	NS	NS	NS	NS	NS	NS	NS
Forward Collision Warning System	NS	X	NS	NS	NS	NS	NS	NS	NS	NS
Lane Keep Assist	NS	X	NS	NS	NS	NS	NS	NS	NS	NS

O : Available, X : Not available, TBA : To be advised, NS : Not sold

**OVERALL RATING**

The Wuling Confero is the first model under the Wuling brand that is being tested by ASEAN NCAP. There was no airbag fitted in the tested Confero model but it is equipped with Seatbelt Reminder System for both driver and front passenger as standard across variants. Although Electronic Stability Control technology is not available in any of its variant, Anti-lock Braking System is offered as an optional equipment for its higher variant. With an overall score of 36.94 points, the Wuling Confero is eligible for 1-Star ASEAN NCAP rating.

	AOP			COP			SAFETY ASSIST			<b>2017 - 2020 ASEAN NCAP RATING</b>  <b>1</b>
	Item	Point	Max	Item	Point	Max	Item	Point	Max	
	ODB	0.00	16.00	FRONTAL	10.12	16.00	EBA	1.00	8.00	<b>OVERALL SCORE</b> 36.94 1
	SIDE	14.64	16.00	SIDE	8.00	8.00	SBR	3.00	6.00	
	HPT Evaluation	0.00	4.00	Installation	2.54	12.00	BST	0.00	2.00	
				Vehicle Based	1.00	13.00	Advanced SATs	0.00	2.00	
<b>Score</b>		14.64	36.00		21.66	49.00		4.00	18.00	
<b>Normalized Score</b>		0.41			0.44			0.22		
<b>Weighting</b>		50%			25%			25%		
<b>Weighted Score</b>		20.33			11.05			5.56		
<b>Maximum Star Rating</b>		5			3			2		

