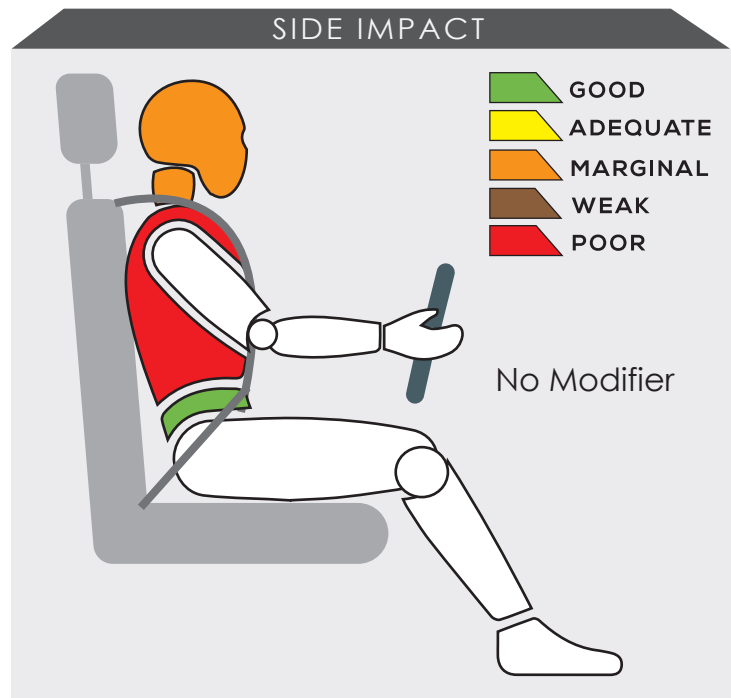
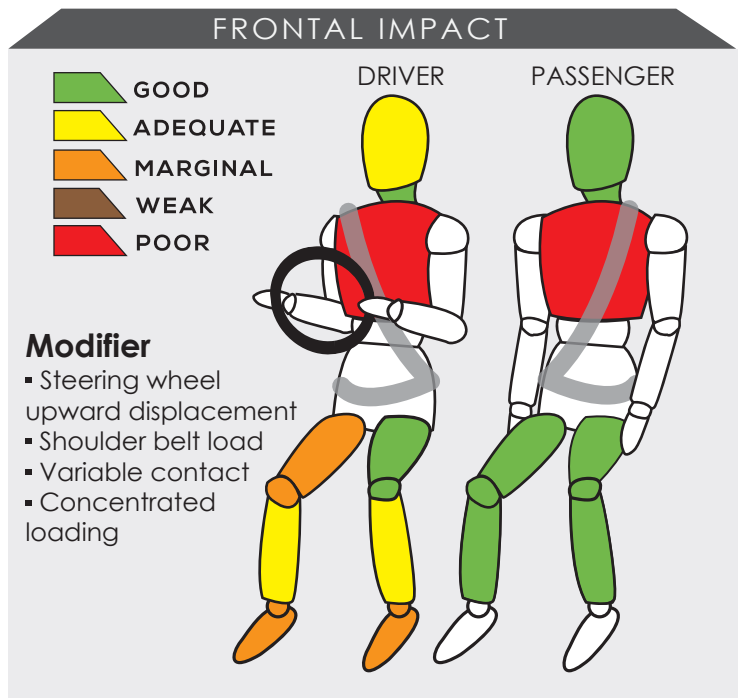


RENAULT KWID



Variant 1	Year Built 2018
Model Year 2018	Vehicle Category HATCHBACK
Engine Capacity 1.0 L	Kerb Mass 770 kg
No. of Airbags 1	Test Lab

TESTED VARIANT ORIGIN	INDIA	FOR	INDONESIA
OTHER ASEAAN PRODUCTION (ALL VARIANTS)	-	FOR	-



Dummy readings showed both the driver and front passenger sustained serious injury to the chests in the frontal impact test.

During the side impact test, the driver received serious injury to the chest.

SAFETY ITEMS (PASSIVE)

ITEMS		COUNTRIES										
Airbags	Driver	NS	S	NS	NS	NS	NS	NS	NS	NS	NS	
	Passenger	NS	X	NS	NS	NS	NS	NS	NS	NS	NS	
	Side	NS	X	NS	NS	NS	NS	NS	NS	NS	NS	
	Curtain	NS	X	NS	NS	NS	NS	NS	NS	NS	NS	
Seatbelts	Retractor Pre-tensioner & Load Limiter for Driver	NS	S	NS	NS	NS	NS	NS	NS	NS	NS	
	Retractor Pre-tensioner & Load Limiter for Passenger	NS	X	NS	NS	NS	NS	NS	NS	NS	NS	

S: Standard on all variants, O : Optional on base; Standard on higher variants, X : Not available, TBA : To be advised, NS : Not sold

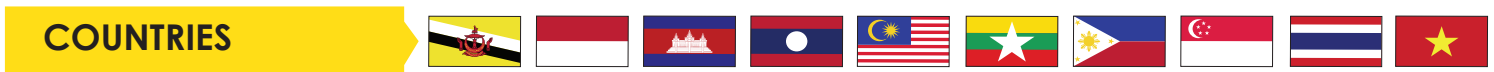


DYNAMIC TEST ASSESSMENT			
18-MONTH-OLD CHILD		3-YEAR-OLD CHILD	
Restraint	: Joei Every Stages	Restraint	: Joei Every Stage
Facing	: Rearward Facing	Facing	: Forward Facing
Installation	: Seatbelt	Installation	: Seatbelt
Frontal Impact	: 8.00	Frontal Impact	: 6.55
Side Impact	: 0.00	Side Impact	: 4.00
Total Performance	: 8.00	Total Performance	: 10.55

CRS INSTALLATION ASSESSMENT

CRS	DIRECTION	SEAT POSITION						
		FRONT	2ND ROW			3RD ROW		
		PASSENGER	LEFT	CENTRE	RIGHT	LEFT	CENTRE	RIGHT
Maxi Cosi Cabriofix	Rwd	PASS	PASS	FAIL	FAIL	N/A	N/A	N/A
Combi Malgot	Rwd	PASS	PASS	FAIL	FAIL	N/A	N/A	N/A
Combi Malgot	Fwd	PASS	PASS	FAIL	FAIL	N/A	N/A	N/A
Combi Buon Junior Air	Fwd	PASS	PASS	FAIL	PASS	N/A	N/A	N/A
Britax Baby Safe Plus ISOFIX Base	Rwd	EXEMPT	EXEMPT	EXEMPT	EXEMPT	N/A	N/A	N/A
Maxi Cosi Milofix	Rwd	EXEMPT	EXEMPT	EXEMPT	EXEMPT	N/A	N/A	N/A
Maxi Cosi Milofix	Fwd	EXEMPT	EXEMPT	EXEMPT	EXEMPT	N/A	N/A	N/A
Britax Duo Plus	Fwd	EXEMPT	EXEMPT	EXEMPT	EXEMPT	N/A	N/A	N/A
Britax KidFix XP	Fwd	PASS	PASS	FAIL	PASS	N/A	N/A	N/A
Joei Every Stage*	Rwd	EXEMPT	PASS	FAIL	FAIL	N/A	N/A	N/A
Joei Every Stage*	Fwd	EXEMPT	PASS	FAIL	PASS	N/A	N/A	N/A

PASS : Install without problem, FAIL : Safety critical problem, EXEMPT : Installation not allowed, N/A : Not available
*ASEAN NCAP's selection



Effective Braking & Avoidance

ABS	NS	X	NS	NS	NS	NS	NS	NS	NS	NS
ESC	NS	X	NS	NS	NS	NS	NS	NS	NS	NS

Seatbelt Reminders

Driver	NS	X	NS	NS	NS	NS	NS	NS	NS	NS
Front Passengers	NS	X	NS	NS	NS	NS	NS	NS	NS	NS
Rear Passengers	NS	X	NS	NS	NS	NS	NS	NS	NS	NS

Blind Spot Technology

Nearside	NS	X	NS	NS	NS	NS	NS	NS	NS	NS
Offside	NS	X	NS	NS	NS	NS	NS	NS	NS	NS

Advanced Safety Assist Technologies

AEB City	NS	X	NS	NS	NS	NS	NS	NS	NS	NS
AEB Inter-Urban	NS	X	NS	NS	NS	NS	NS	NS	NS	NS
AEB VRU	NS	X	NS	NS	NS	NS	NS	NS	NS	NS
Lane Departure Warning System	NS	X	NS	NS	NS	NS	NS	NS	NS	NS
Forward Collision Warning System	NS	X	NS	NS	NS	NS	NS	NS	NS	NS
Lane Keep Assist	NS	X	NS	NS	NS	NS	NS	NS	NS	NS

○ : Available, X : Not available, TBA : To be advised, NS : Not sold

OVERALL RATING

This is the first assessment by ASEAN NCAP on the Renault's model. The ASEAN NCAP crash test showed that the Renault Kwid did not perform very well in the Adult Occupant Protection category in which it obtained 10.12 points, contributed only by the score from the frontal impact test. Its Child Occupant Protection score received 14.56 points with seatbelt as the restraint method for child safety seats. As for the Safety Assist Technology, the tested hatchback was not fitted with any safety technologies such as Electronic Stability Control and Seatbelt Reminder System hence, no point was given to this category. For this test, the Renault Kwid achieved an accumulated score of 24.68 points, rated as Zero-Star.

RENAULT KWID TESTED JUNE 2018 ZERO STAR ASEAN NCAP Newly Qualified	AOP			COP			SAFETY ASSIST			2017 - 2020 ASEAN NCAP RATING 0
	Item	Point	Max	Item	Point	Max	Item	Point	Max	
	ODB	7.29	16.00	FRONTAL	14.55	16.00	EBA	-	8.00	0 OVERALL SCORE 24.68
	SIDE	-	16.00	SIDE	4.00	8.00	SBR	-	6.00	
	HPT Evaluation	-	4.00	Installation	7.00	12.00	BST	-	2.00	
				Vehicle Based	3.00	13.00	Advanced SATs	-	2.00	
Score		7.29	36.00		28.55	49.00		-	18.00	
Normalized Score		0.20			0.58			0.00		
Weighting		50%			25%			25%		
Weighted Score		10.12			14.56			0.00		
Maximum Star Rating		1			3			0		

