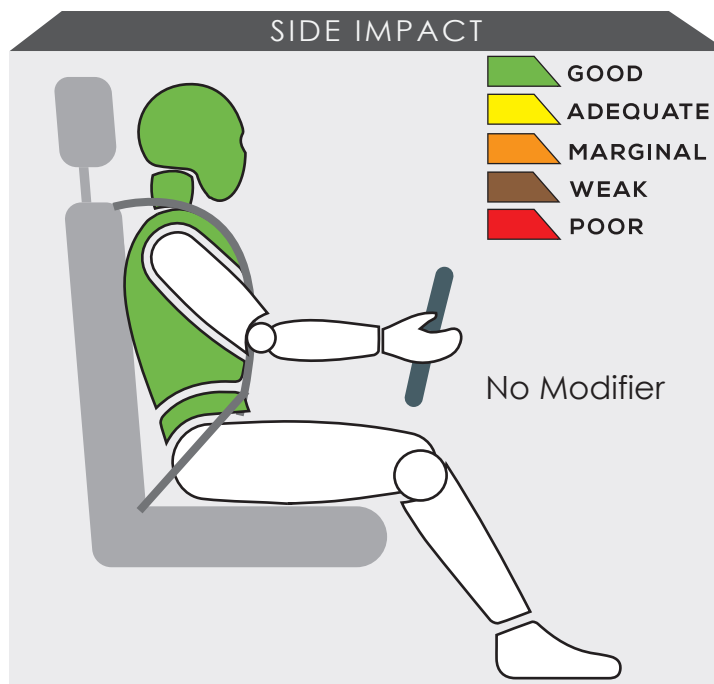
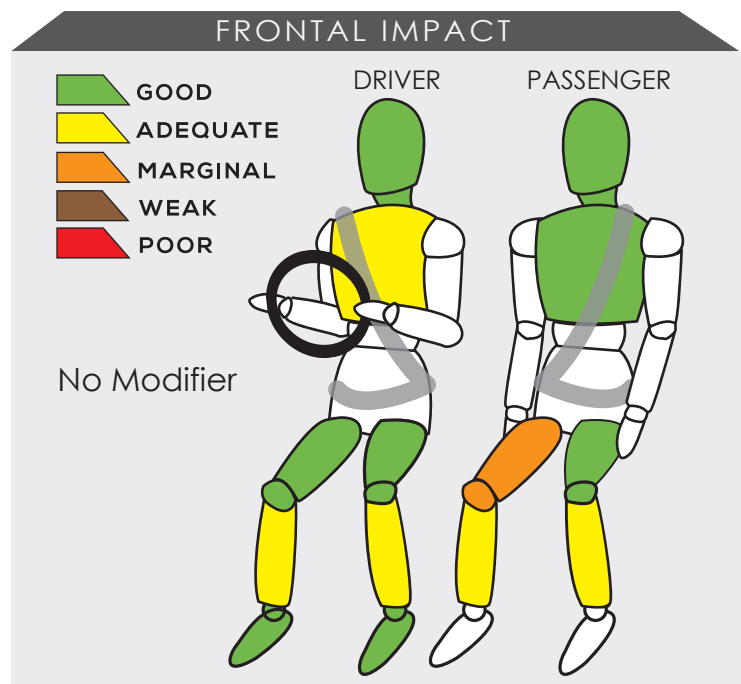


# TOYOTA VIOS



Variant <b>1.5N NR</b>	Year Built <b>2017</b>
Model Year <b>2018</b>	Vehicle Category <b>SEDAN</b>
Engine Capacity <b>1.5 L</b>	Kerb Mass <b>1115 kg</b>
No. of Airbags <b>7</b>	Test Lab <b>JARI</b>


TESTED VARIANT ORIGIN	<b>THAILAND</b>	FOR	<b>SINGAPORE</b>
OTHER ASEAN PRODUCTION (ALL VARIANTS)	<b>THAILAND</b>	FOR	<b>SINGAPORE, LAOS, CAMBODIA, MYANMAR</b>
	<b>INDONESIA</b>		<b>INDONESIA, BRUNEI</b>
	<b>PHILIPPINES</b>		<b>PHILIPPINES</b>
	<b>VIETNAM</b>		<b>VIETNAM</b>
	<b>MALAYSIA</b>		<b>MALAYSIA</b>



The driver's head and knee scored full four points in the test. However, there is a possibility for the chest and lower leg to sustain injury in a real world crash. Knee hazard occurred at the passenger's right leg, which is not common for any car.

The performance of HPT was confirmed with additional deployment test and its score was determined based on Fitment Rating System (FRS).

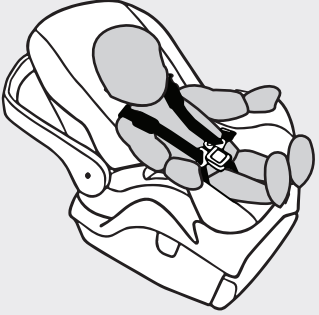

## SAFETY ITEMS (PASSIVE)

ITEMS	COUNTRIES										
		TH	ID	KB	LA	MY	MM	PH	SG	LA	VN
Airbags	Driver	S	S	S	S	S	S	S	S	NS	S
	Passenger	S	S	S	S	S	S	S	S	NS	S
	Side (2)	S	S	S	S	S	S	O	S	NS	O
	Curtain (2)	S	S	S	S	S	S	O	S	NS	O
	Knee (1)	S	S	S	S	S	S	S	S	NS	S
Seatbelts	Retractor Pre-tensioner & Load Limiter for Driver	S	S	S	S	S	S	S	S	NS	S
	Retractor Pre-tensioner & Load Limiter for Passenger	S	S	S	S	S	S	S	S	NS	S

S : Standard on all variants, O : Optional on base; Standard on higher variants, X : Not available, TBA : To be advised, NS : Not sold



### DYNAMIC TEST ASSESSMENT

	18-MONTH-OLD CHILD	3-YEAR-OLD CHILD
<b>Restraint</b>	: Toyota MIDI I-SIZE	: Toyota MIDI I-SIZE
<b>Facing</b>	: Rearward Facing	: Rearward Facing
<b>Installation</b>	: ISOFIX & Supportleg	: ISOFIX & Supportleg
		
<b>Frontal Impact</b>	: 8.00	: 8.00
<b>Side Impact</b>	: 4.00	: 4.00
<b>Total Performance</b>	: 12.00	: 12.00

## CRS INSTALLATION ASSESSMENT

CRS	DIRECTION	SEAT POSITION						
		FRONT	2ND ROW			3RD ROW		
		PASSENGER	LEFT	CENTRE	RIGHT	LEFT	CENTRE	RIGHT
Maxi Cosi Cabriofix	Rwd	EXEMPT	PASS	PASS	PASS	N/A	N/A	N/A
Combi Malgot	Rwd	EXEMPT	PASS	PASS	PASS	N/A	N/A	N/A
Combi Malgot	Fwd	PASS	PASS	PASS	PASS	N/A	N/A	N/A
Combi Buon Junior Air	Fwd	PASS	PASS	FAIL	PASS	N/A	N/A	N/A
Britax Baby Safe Plus ISOFIX Base	Rwd	EXEMPT	PASS	EXEMPT	PASS	N/A	N/A	N/A
Maxi Cosi Milofix	Rwd	EXEMPT	PASS	EXEMPT	PASS	N/A	N/A	N/A
Maxi Cosi Milofix	Fwd	EXEMPT	PASS	EXEMPT	PASS	N/A	N/A	N/A
Britax Duo Plus	Fwd	EXEMPT	PASS	EXEMPT	PASS	N/A	N/A	N/A
Britax Parkway	Fwd	PASS	PASS	FAIL	PASS	N/A	N/A	N/A
Toyota MIDI I-SIZE (ISOFIX)*	Rwd	EXEMPT	PASS	EXEMPT	PASS	N/A	N/A	N/A
Toyota MIDI I-SIZE (ISOFIX)*	Rwd	EXEMPT	PASS	EXEMPT	PASS	N/A	N/A	N/A

PASS : Install without problem, FAIL : Safety critical problem, EXEMPT : Installation not allowed, N/A : Not available  
\*Manufacturer's selection



**Effective Braking & Avoidance**

ABS	O	O	O	O	O	O	O	O	NS	O
ESC	O	O	O	O	O	O	O	O	NS	O

**Seatbelt Reminders**

Driver	O	O	O	O	O	O	O	O	NS	O
Front Passengers	O	O	O	O	O	O	O	O	NS	O
Rear Passengers	X	X	X	X	O	X	X	X	NS	X

**Blind Spot Technology**

Nearside	X	X	X	X	X	X	X	X	NS	X
Offside	X	X	X	X	X	X	X	X	NS	X

**Advanced Safety Assist Technologies**

AEB City	X	X	X	X	O	X	X	X	NS	X
AEB Inter-Urban	X	X	X	X	O	X	X	X	NS	X
AEB VRU	X	X	X	X	O	X	X	X	NS	X
Lane Departure Warning System	X	X	X	X	O	X	X	X	NS	X
Forward Collision Warning System	X	X	X	X	O	X	X	X	NS	X
Lane Keep Assist	X	X	X	X	X	X	X	X	NS	X
Driver Attention Monitor	X	X	X	X	X	X	X	X	NS	X
Rear Cross Traffic Alert	X	X	X	X	O	X	X	X	NS	X

O : Available, X : Not available, TBA : To be advised, NS : Not sold

**OVERALL RATING**

This is Vios second assessment with ASEAN NCAP in which the first assessment conducted in 2012, it received 4-Star rating. The new Toyota Vios is equipped with active safety features that are Seatbelt Reminder System for its frontal occupants and Electronic Stability Control in all its variants. The model also offers several other SATs features for the Malaysian market. With these impressive achievements by achieving 80.41 points, the new Toyota Vios has made it eligible for 5-Star ASEAN NCAP rating.

	AOP			COP			SAFETY ASSIST			2017 - 2020 ASEAN NCAP RATING <b>5</b>
	Item	Point	Max	Item	Point	Max	Item	Point	Max	
Score		28.89	36.00		42.44	49.00		12.41	18.00	OVERALL SCORE 80.41
Normalized Score		0.83			0.87			0.69		
Weighting		50%			25%			25%		
Weighted Score		41.52			21.66			17.24		
Maximum Star Rating		5			5			5		

